

Type E/DOUBLE-INTERLOCK®/Type K/TAF

Features / Benefits	
Type E	B6-3
DOUBLE-INTERLOCK & Type K	B6-5
TAF	B6-6
Specifications	B6-8
How to Order	B6-9
Nomenclature	B6-10
Selection (Inch)	B6-11
Easy Selection Table	B6-15
Engineering/Technical	B6-17
Selection/Dimensions - Inch	
Type E	
Pillow Block	B6-22
Flanges	B6-28
Take-Ups	B6-30
Type K	
Pillow Blocks	B6-34
Flanges	B6-36
Inner Units	B6-38
Take-ups	B6-40
DOUBLE-INTERLOCK	
Pillow Blocks	B6-44
Flanges	B6-48
Inner Units	B6-50
TAF	
Pillow Blocks	B6-52
Inner Units	B6-56
Modifications/Accessories	
Type E end Closures and E-TECT Seals	B6-58
Type K, DOUBLE-INTERLOCK and TAF End Closures and E-TECT Seals	B6-60
Selection - TAF Smart Bearings	B6-61
Selection/Dimensions - Metric	
Type E - Metric	B6-70
DOUBLE-INTERLOCK - Metric	B6-72
Part Number Index	INDEX-1
Keyword Index	INDEX-34

NOTES

DODGE[®]



D-LOK

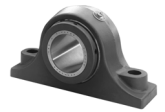
Type E Family

Specialty Tapered

S-2000

UNISPHERE II

FEATURES/BENEFITS



Type E/DOUBLE-INTERLOCK/Type K/TAF

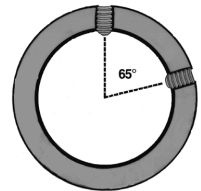
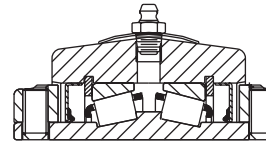
These four product lines have many common features and benefits that are shown on this page. Unique features for each product are shown on the following pages.

The common components used by all four lines include:

- Bearings
- Seals
- Locking collars
- Bore range

General Features:

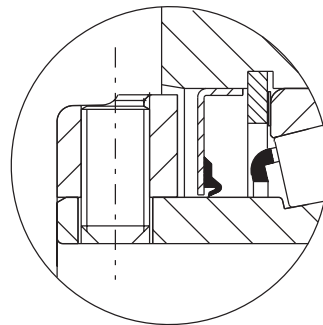
- Factory assembled, adjusted and prelubricated
- Case hardened rollers and races
- Easy installation and maintenance
- 65 degree set screw angle Springlok collar/flingers - more holding power than 90 to 120 degree
- Single rubber lip contacting seals



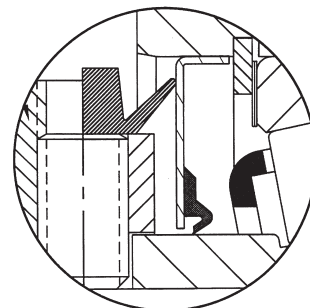
Exclusive Sealing Designs And Features

Rolling Elements Never Exposed to Contaminants

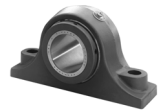
- Exclusive "R" Seal features a combination metal shield and positive land riding contacting lip seal. Keeps contaminants out, lubricants in.
- E-TECT Seal option gives extra protection with a combination face rubbing seal in addition to the "R" Seal System (See page B6-58)
- TIMKEN™ tapered roller bearing inserts allow for combination radial and thrust loads.
- Lip design conform to cones. permits grease to purge.
- Close fit oversized collars act as flingers for added protection in dusty or damp environments



Standard "R" Seal System



E-TECT Seal System



Type E

DODGE Type E One Bearing, One Seal For Dusty or Damp Environments



- “E” stands for economy
- Type E allows easy upgrade from ball bearings
- Interchangeable mounting dimensions with ball bearings
- Moderate price premium vs. ball bearings
- Steel housed pillow blocks available in selected sizes

The Original DODGE Type E Bearing, Only Better

- Provides added protection against contamination
- Completely assembled, factory adjusted and properly lubricated - **shaft ready**
- Stocked in all configurations
- Extra protection - E-TECT seal option
- Steel end covers available up to 3”, 75mm



Top Angle Take-Ups
1-3/4 to 4”
45 - 100 mm



Center Pull Frame With
Wide Slot Take-up
1-3/8 to 3”
35 - 75 mm



Pillow Block
1-3/16 to 7”
35 - 180 mm

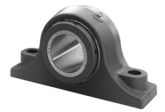


Piloted Flange
1-3/16 to 5”
35 - 125 mm



Flange
1-3/16 to 4-12”
35 - 115 mm

FEATURES/BENEFITS



Type K and DOUBLE-INTERLOCK

DODGE DOUBLE-INTERLOCK COMBINES DURABILITY WITH MOUNTING FLEXIBILITY

Heavy Duty Housing Construction Has Proven Performance

- Offers tapered roller bearing durability in a variety of mounting styles
- Extra protection E-TECT Seal Option
- Special clearances and greases available
- Self aligning
- Factory assembled, adjusted and lubricated - **shaft ready**
- End covers available up to 5"



Pillow Block
1-3/16 to 7"



Flanges
1-3/16 to 5"



S-1 Unit



B-1 Unit
1-3/16 up to 5"

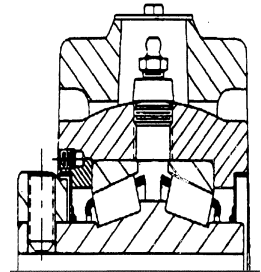


D Unit
1-3/16 up to 5"

DODGE TYPE K FITS WHERE COMPETITORS WON'T

Tapered Roller Bearings With Reduced Length Thru Bore

- Reduces length thru bore design in a variety of mounting styles
- Single collar design saves space and installation time
- Allows bearing to be closer to the load for reduced shaft design
- Self-aligning
- Factory assembled, adjusted and lubricated - **shaft ready**
- Same housing as DOUBLE-INTERLOCK
- End covers available up to 5"



Flange Expansion and Non-Expansion
1-3/16 - 3-15/16



S-1 & B-1 Units
1-3/16 - 3-15/16"



Wide Slot Take-Up Frame
1-3/8 - 3"

Pillow Block Expansion & Non-Expansion
1-3/16 - 3-15/16"



Top Angle Take-Ups
1-3/4 - 3-15/16"



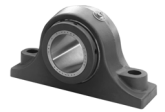
D-LOK

Type E Family

Specialty Tapered

S-2000

UNISPHERE II

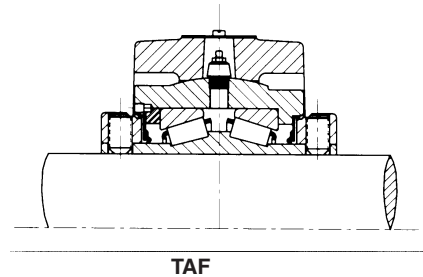


TAF

TAF IS A COST SAVING ALTERNATIVE TO SAF SPHERICAL BEARINGS

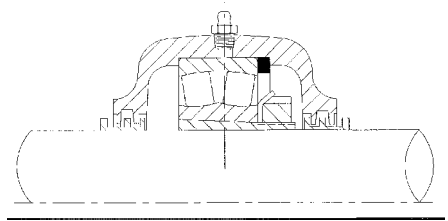
Mounts Fast, Stays Cleaner And Extends Service Life

- **Shaft ready** - mounts six times faster than SAF
- Interchangeable with SAF style pillow blocks
- Self-aligning, factory assembled, adjusted and lubricated
- Available in 1-7/16" up to 7" shaft diameters
- Equipped with expansion or non-expansion housing
- E-TECT seal option available up to 7"
- Optional Smart Housings accommodate speed, vibration and temperature sensor kits



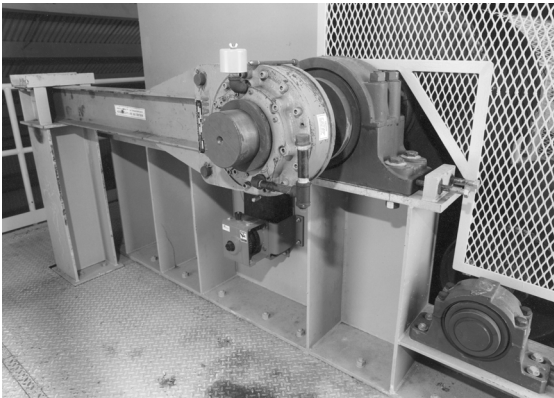
TAF

Self-aligning provided by spherically machined housing

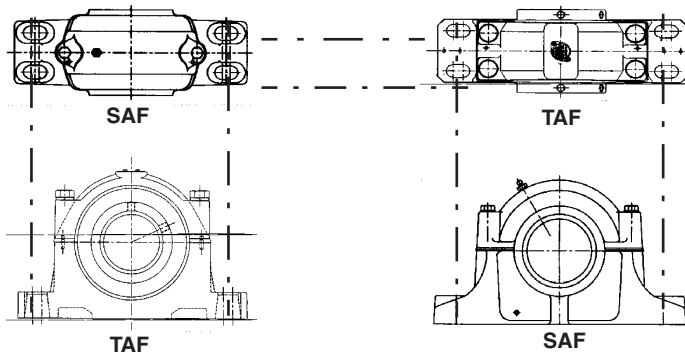


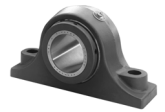
SAF

Self-aligning provided by insert, limited by seal interference



TAF Is Interchangeable With SAF Mounting Dimensions





Type K/DOUBLE-INTERLOCK/TAF

DODGE BEARINGS SAVE YOU TIME AND MONEY

Compare These DODGE TAF, Type K & DOUBLE-INTERLOCK Bearing Advantages Against Standard SAF Pillow Blocks

Standard SAF

- Four prices
- Up to six packages
- Open bearing
- Feeler gauge required
- Grease required

DODGE TAF, Type K and DOUBLE-INTERLOCK

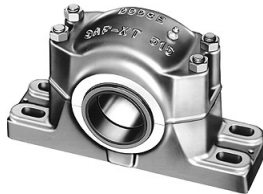
- One price
- Sealed bearing
- Factory adjusted
- Factory lubricated
- **Shaft ready**



Compare Standard SAF and DODGE Sealing Designs

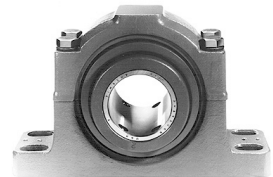
Standard SAF

- Seals ride independently of bearing
- Less than 1° static misalignment
- Sealing effectiveness decreases as misalignment increases
- Seals distort when misalignment occurs



DODGE TAF, Type K and DOUBLE-INTERLOCK

- Inner unit carries seal
- Up to 5° static misalignment
- Seal and bearing ride together in inner unit
- Seals maintain contact on cones even with misalignment



SPECIFICATION



D-LOCK

Type E Family

Specialty Tapered

S-2000

UNISPHERE II

Type E, Type K, DOUBLE-INTERLOCK and TAF

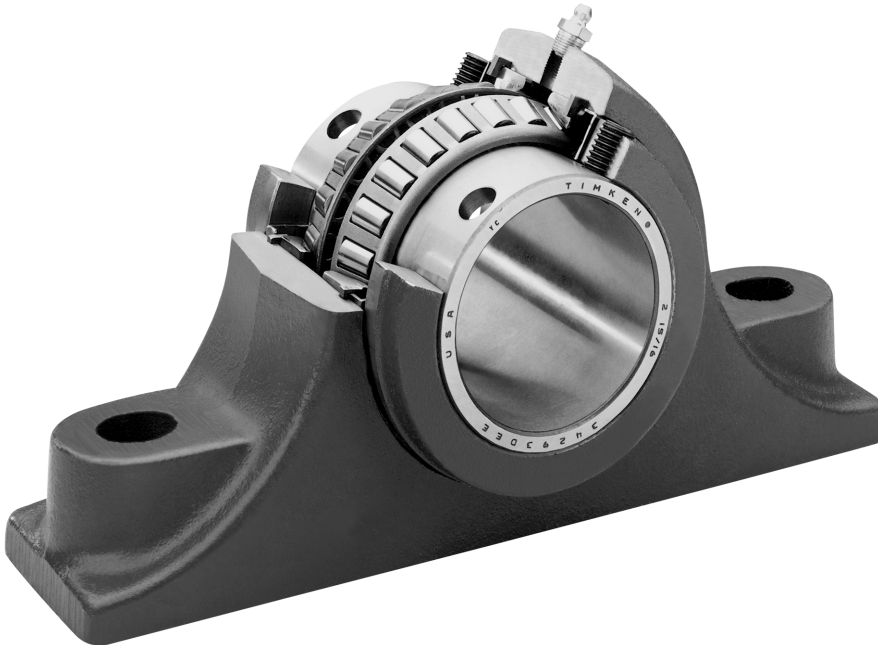
Type E, Type K, DOUBLE-INTERLOCK and TAF mounted bearings are all general purpose high capacity tapered roller bearings capable of handling any combination of radial and thrust load within the capacity of the bearing.

All of these bearings are mounted to the shaft by means of set screw collars having 65 degree set screw spacing for optimum clamping force. The Type E, DOUBLE-INTERLOCK, and TAF mounted bearings have a locking collar at each end of their extended inner races. Type K has a single locking collar. The tapered roller bearings for these mounted bearings all have case carburized inner races (cones), outer races (cups), and rollers.

Bearings are preassembled, prelubricated and factory adjusted. They are normally equipped with land riding contact type seals with a metal deflector guard.

The standard housing material for most of these mounted bearings is ASTM A48 Class 30 Iron having a minimum tensile strength of 30,000 psi. The outer housing for the Type K and DOUBLE-INTERLOCK flange bearings thru 4" bore size utilize housings made of ductile iron (ASTM A536 Grade 65-45-12) with 65,000 psi tensile strength. Type E pillow blocks are also available with cast steel housing having a tensile strength of 70,000 psi for 2 bolt base thru 3-1/2" bore size and 4 bolt base from 3-15/16" thru 5" bore size on an assembled or order basis.

The Type K, DOUBLE-INTERLOCK pillow blocks and flange bearings plus the TAF pillow blocks all have split outer housings used with completely assembled, lubricated and adjusted inner units simplifying replacement of the bearing in the pillow block or flange bearing. All Type E mounted bearings, Type K take up units and all D units, S-1 units, and B-1 units have solid one piece housings.



FEATURES/BENEFITS PAGE B6-3	NOMENCLATURE PAGE B6-10	SELECTION PAGE B6-11	SELECTION/DIMENSIONS PAGE B6-22
--------------------------------	----------------------------	-------------------------	------------------------------------

HOW TO ORDER



Type E, Type K, DOUBLE-INTERLOCK and TAF

There are two ways to specify DODGE Bearings. Most of the product offerings have part numbers with listings shown throughout this catalog. Use of part numbers ensures accurate order processing.

When part numbers are not shown, the product may be specified by description or part name. This method is used when ordering units that include modifications or options. To order by description, use the nomenclature key shown on page and add any special instructions to the end of the description for options not covered by the nomenclature.

SPECIAL BEARING REQUIREMENTS AND SPECIAL LUBRICANTS

DODGE Bearings are factory adjusted and pre-lubricated. For applications where extreme ambient temperatures, high speeds or high loads are expected, a variety of specialty lubricants and adjustments are available. Standard grease provided is Mobilith AW 2 up to 5", 125mm bore. Above 5" bore Mobil Mobilux #2EP is

standard. High temperature greases available include Moluballoy 896 HT and Mobilith SHC460. Other special lubricants are available upon request. Special lubricant options usually involve set-up charges and premiums. To order, specify type of lubricant required at the end of the product name or after the standard part number.

Example:

F4B-E-207 except with Mobilith SHC 460 grease and .012 to .015 lateral end play

or

023106 except with Mobilith SHC 460 grease and .012 to .015 lateral end play

OTHER SPECIAL REQUIREMENTS NOT LISTED

For applications requiring modifications not listed, we encourage you to contact our Application Engineering Department for Bearings at 864-284-5700.

D-LOK

Type E Family

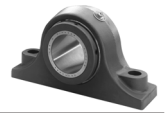
Specialty Tapered

S-2000

UNISPHERE II

FEATURES/BENEFITS PAGE B6-3	NOMENCLATURE PAGE B6-10	SELECTION PAGE B6-11	SELECTION/DIMENSIONS PAGE B6-22
--------------------------------	----------------------------	-------------------------	------------------------------------

NOMENCLATURE



Type E, Type K, DOUBLE-INTERLOCK and TAF

P2B - DI - 207 - RE*

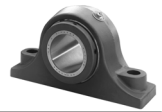
HOUSING STYLE OPTION	BEARING TYPE OPTIONS	SIZE	OTHER OPTIONS
P2B = Pillow Block 2-Bolt, Cast Iron	E = Type E	INCHES & 16TH 2 = 2 Inches	R = Land Riding Rubbing Seal
P4B = Pillow Block 4-Bolt, Cast Iron	K = Type K	07 = 7/16 Inches Or	T = E TECT Seal
SP2B - Pillow Block 2-Bolt, Cast Steel	DI = DOUBLE-INTERLOCK	207 = 2-7/16"	E = Expansion Type Bearing. Note: If E Does Not Appear After Seal Type, Then Bearing Is Non-Expansion Type
SP4B = Pillow Block 4-Bolt, Cast Steel	TAF = TAF	METRIC 060M = 60 Millimeters	SMART = Drilled For Sensor Kits
F4B = Flange Bearing 4-Bolt, Cast Iron			
FC = Piloted Flange Bearing (Flanged Cartridge)			
B1U = B1 Unit, Cast Iron			
DU = D Unit, Cast Iron			
S1U = S-1, Unit, Cast Iron			
WSTU = Wide Slot Take-Up Bearing, Cast Iron			
TP = Top Angle Take-Up Bearing Cast Iron			
H2S = Pillow Block Housing Only 2-Bolt, Cast Iron			
H4S = Pillow Block Housing 4-Bolt, Cast Iron			

FEATURES/BENEFITS
PAGE B6-3

SPECIFICATION
PAGE B6-8

SELECTION
PAGE B6-11

SELECTION/DIMENSIONS
PAGE B6-22



Type E, Type K, DOUBLE-INTERLOCK and TAF Tapered Roller Bearings

DODGE Type E, K, DI and TAF Double Row Tapered Roller Bearings have the capacity to carry heavy radial loads and combined radial and thrust loads. The maximum recommended load which can be applied is limited by various components in the system such as bearing, housing, shaft, shaft attachment, speed and life requirements as listed in this catalog. DODGE tapered roller bearings have been applied successfully even when these limits have been exceeded under controlled operating conditions. Contact DODGE Application Engineering (864) 297-4800 for applications which exceed the recommendations of this catalog.

L₁₀ Hours Life --- The life which may be expected from at least 90% of a given group of bearings operating under identical conditions.

$$L_{10} = \left(\frac{C_{90}}{P} \right)^{10/3} \times \frac{1,500,000}{\text{RPM}}$$

Where: C₉₀ = Dynamic Capacity (Table 1, pg. B6-14), lbs.

P = Equivalent Radial Load, lbs.

GENERAL

Heavy Service --- For heavy shock loads, frequent shock loads, or severe vibrations, add up to 50% (according to severity of conditions) to the Equivalent Radial Load. Consult DODGE Application Engineering for additional selection assistance.

Thrust load values shown in the table below are recommended as a guide for general applications that will give adequate L₁₀ life for pillow blocks. The maximum thrust load should not exceed values shown on Table. Where substantial radial load is also present, it is advisable to calculate actual L₁₀ life to assure that it meets the requirements. The effectiveness of the shaft attachment to carry thrust load depends on proper tightening of the setscrews, shaft tolerance and shaft

deflections. Therefore, it is advisable to use auxiliary thrust carrying devices such as shaft shoulder, snap ring or a thrust collar to locate the bearing under thrust loads heavier than shown below, or where extreme reliability is desired.

RPM RANGE		20-200	201 - 2000	Over 2000
RECOMMENDED THRUST LOAD	E, DI, TAF	C ₉₀ /4	C ₉₀ /8	C ₉₀ /12
	K	C ₉₀ /5	C ₉₀ /8	C ₉₀ /12

The shaft tolerances recommended below are adequate for normal radial and radial/thrust load applications. The radial load is limited by the attachment to the shaft (see Table 1). Where the applied radial load (F_R) exceeds this limit (maximum allowable slip fit radial load), a snug-to-tight press fit of the shaft is required. Since the allowable load, especially at a low speed, is very large, the shaft should be checked to assure adequate shaft strength.

The magnitude and direction of both the thrust and radial load must be taken into account when selecting a housing. **When pillow blocks are utilized, heavy loads should be directed through the base. Where uplift loads are involved, see Tables 6, 7, and, pg. B6-19 for maximum values.** Where a load pulls the housing away from the mounting base, both the hold-down bolts and housing must be of adequate strength. Auxiliary load carrying devices such as shear bars are advisable for side or end loading of pillow blocks and radial load for flange units.

SHAFT SIZE	TOLERANCE, INCHES
UP TO 1-1/2"	+ .0000 - .0005"
1-5/8 TO 4"	+ .000 - .001"
4-7/16 TO 6"	+ .000 - .0015"
6-7/16 - 8"	+ .000 - .002"

NOTE: The L₁₀ life calculated using the above formula is subject to life adjustment factors in accordance with ABMA standards described on page B16-9.

FEATURES/BENEFITS PAGE B6-3	SPECIFICATION PAGE B6-8	NOMENCLATURE PAGE B6-10	SELECTION/DIMENSIONS PAGE B6-22
--------------------------------	----------------------------	----------------------------	------------------------------------



Type E, Type K, DOUBLE-INTERLOCK and TAF Tapered Roller Bearings

SELECTING BEARINGS SUPPORTING RADIAL LOADS ONLY

1. Define L_{10} Life Hours desired.
2. Establish bearing radial load, F_R ($F_R = P$ for Pure Radial Load Conditions). The DODGE program BEST™* can be used to find application loads.
3. Establish RPM.

Using the easy selection Table 2, pg B6-15. find, under the RPM column, the equivalent radial load that equals or is higher than the application radial load for the desired life. The shaft size on the far left will be the minimum shaft size that you can use for your application. If the desired life is different than the values shown on the chart, use alternate Method A shown below.

- Example: 1. L_{10} Life = 30,000 Hours
 2. Radial load = 3800 lbs.
 3. RPM = 1,000

At the intersection of the 1,000 RPM column and the 30,000 hours L_{10} life row, the equivalent radial load of 3910 lbs. exceeds the 3800 lbs. radial load for shaft sizes 2-11/16,-3". A bearing with bore ranging from 2-11/16" to 3" may be used for this application.

ALTERNATE METHOD A --- SELECTING A BEARING FOR AN L10 LIFE VALUE NOT SHOWN IN THE EASY SELECTION CHART.

The L_{10} life equation can be rearranged so that the bearing dynamic capacity C_{90} is identified in terms of L_{10} , RPM and P.

$$C_{90} = \left(\frac{L_{10} \times \text{RPM}}{1,500,000} \right)^{0.3} \times P$$

($P = F_R$ for Pure Radial Load Conditions)

Since the L_{10} , RPM, and P are known, solve for C_{90} . Select from the dynamic capacity column on Table 1, pg B6-14.

The C_{90} value equal to or greater than the C_{90} value just calculated. The bore size on the far left represents the bore size selection. Check that the application RPM does not exceed the MAX. RPM on Table 1. Also check that the radial load does not exceed the Maximum Allowable Slip Fit Radial Load shown on Table 1. If it does, a line to line to light press fit of shaft is required. When selecting an L_{10} life of less than 30,000 hours, particular attention must be paid to shaft deflection and proper lubricant selection.

SELECTING BEARINGS SUPPORTING COMBINATION RADIAL AND THRUST LOADS

When a bearing supports both a radial load and a thrust load, the loading on the two rows is shared unequally depending on the ratio of thrust to radial load. The use of the X (radial factor) and Y (thrust factor) from Table 1 converts the applied thrust load and radial loads to an equivalent radial load having the same effect on the life of the bearing as a radial load of this magnitude.

The equivalent radial load $P = XF_R + YF_A$

- Where: P= Equivalent radial load, lbs.
 F_R = Radial load, lbs.(see Table 1 for allowable slip fit maximum)
 F_A = Thrust (axial) load, lbs.
 e = Thrust load to radial load factor (Table 1)
 X = Radial load factor (Table 1)
 Y = Thrust load factor (Table 1)

To find X and Y, calculate F_A/F_R and compare to e for the selected bore size. Determine X and Y from Table 1, pg. B6-14 depending on whether F_A/F_R is equal to or less than e , or F_A/F_R is greater than e . Substitute all known values into the equivalent radial load equation. P (equivalent radial load) can be used in the life formula to determine L_{10} , or it can be compared to the allowable equivalent radial load ratings for the speed and hours life desired in the easy selection Table 2, pg B6-15.

*The DODGE Bearing Evaluation and Selection Technique (BEST) is a menu driven computer program that calculates bearing loads, fatigue life and operating temperature for a two bearing shaft system based on user supplied input parameters. To order, call (864) 287-4800.

FEATURES/BENEFITS PAGE B6-3	SPECIFICATION PAGE B6-8	NOMENCLATURE PAGE B6-10	SELECTION/DIMENSIONS PAGE B6-22
--------------------------------	----------------------------	----------------------------	------------------------------------



Type E, Type K, DOUBLE-INTERLOCK and TAF

SELECTING BEARINGS SUPPORTING ONLY THRUST LOADS

Tapered Roller Bearings perform extremely well under pure thrust load applications. Use $P = YF_A$ for the equivalent radial load. The value of Y is obtained from Table 1, pg. B6-14 for $F_A/F_R > e$. Substitute Y and F_A into the equivalent load equation. P (equivalent radial load) can be used in the life formula to determine L_{10} or it can be compared to the allowable equivalent radial load ratings for the speed and hours life desired in the easy selection Table 2, pg. B6-15.

LUBRICATION

DODGE E, K, DI, and TAF tapered roller bearings up to 5" bore are lubricated at the factory with MOBILITH AW 2 grease. Above 5" bore they are lubricated with Mobil Mobilux #2EP. Mobilith AW 2 is a superior industrial grease

using a lithium complex thickener and a highly refined base oil. Mobil Mobilux #2EP grease is a superior industrial grease using a lithium hydroxystearate thickener and highly refined base oil. These greases will adequately handle low and medium speeds with low and medium loads at normal temperatures as defined on Table 5, pg. B6-18. For very low and high speeds, for heavy loads and for low and high temperatures, special greases must be used. Contact DODGE Application Engineering (864) 297-4800. DODGE engineers will recommend bearings and lubricants for the above unusual conditions. DODGE also has the expertise to custom design and build special bearings for your needs. The only maintenance requirement for DODGE Tapered Roller Bearings is periodic relubrication at regular intervals as outlined in the appropriate instruction manuals.

RELUBRICATION SCHEDULE

Hours Run per Day	SUGGESTED LUBRICATION PERIOD IN WEEKS							
	1 to 250	251 to	501 to	751 to	1001 to	1501 to	2001 to	2501 to
	RPM	500 RPM	750 RPM	1000 RPM	1500 RPM	2000 RPM	2500 RPM	3000 RPM
8	12	12	10	7	5	4	3	2
16	12	7	5	4	2	2	2	1
24	10	5	3	2	1	1	1	1

High Speed Operation --- In the higher speed ranges too much grease will cause overheating. The amount of grease that the bearing will take for particular high speed application can only be determined by experience --- see "Operating Temperature" below. If excess grease in the bearing caused overheating, it will be necessary to remove grease fitting (also drain plug when furnished) to permit excess grease to escape. When establishing a relubrication schedule, note that a small amount of grease at frequent intervals is preferable to a large amount at infrequent intervals.

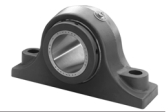
Operation in Presence of Dust, Water or Corrosive Vapors --- Under these conditions the bearing should contain as much grease as speed will permit, since a full bearing with consequent slight leakage is the best protection against entrance of foreign material. In the higher speed ranges too much grease will cause overheating --- see "High Speed Operation". In the lower speed ranges, it is advisable to add extra grease to a new bearing before putting into operation. Bearings should be

greased as often as necessary (daily if required) to maintain a slight leakage at the seals.

INSTALLATION AND MAINTENANCE

In nearly all applications good design practice requires two bearings supporting the shaft. In cases where three or more bearings are installed, unless precautions are taken to line the bearings up, both vertically and horizontally, it is possible to induce heavy loads. In the case of two bearings, alignment is not as critical, especially with DODGE K, DI, and TAF Tapered Roller Bearings. K, DI, and TAF bearings are designed to allow as much as 2° to 7° of static misalignment depending on bore size. To ensure good alignment, mounting surfaces must be checked for flatness and must lie in the same plane. When tightening base bolts and cap bolts, each bolt should be alternately tightened in incremental torque values until full torque is achieved to prevent the angular shifting of the pillow block that occurs when one bolt is tightened to its full torque. Shimmiing may be required to minimize misalignment..

FEATURES/BENEFITS PAGE B6-3	SPECIFICATION PAGE B6-8	NOMENCLATURE PAGE B6-10	SELECTION/DIMENSIONS PAGE B6-22
--------------------------------	----------------------------	----------------------------	------------------------------------



Type E, Type K, DOUBLE-INTERLOCK and TAF

TABLE 1 - E, K, DI, AND TAF TAPERED ROLLER BEARING RADIAL AND THRUST FACTORS

SHAFT SIZE	e	F _A /F _R <e		F _A /F _R >e		DYNAMIC CAPACITY C ₉₀	STATIC CAPACITY C ₀	MAXIMUM RPM	MAXIMUM RPM	MAXIMUM ALLOWABLE SLIP FIT RADIAL LOAD, FR **, LBS	
		X	Y	X	Y	LBS.	LBS.	R-SEAL	E-TECT	E,DI,&TAF	K
1-3/16 1-1/4	0.49	0.87	1.77	0.70	2.14	2,980	15,760	4,490	3,100	3,100	2,100
1-3/8 1-7/16	0.46	0.87	1.89	0.70	2.28	4,760	26,000	3,820	2,675	5,000	3,300
1-1/2 1-5/8 1-11/16	0.44	0.87	1.96	0.70	2.37	6,140	33,000	3,320	2,325	6,400	4,300
1-3/4 1-7/8 1-15/16 2	0.33	0.87	2.64	0.70	3.18	8,070	43,000	3,050	2,135	8,400	5,600
2-3/16	0.36	0.87	2.38	0.70	2.87	8,550	48,200	2,730	1,900	8,900	5,900
2-1/4 2-7/16 2-1/2	0.40	0.87	2.17	0.70	2.63	9,090	54,000	2,420	1,700	9,500	6,300
2-11/16 2-3/4 2-15/16 3	0.46	0.87	1.87	0.70	2.26	9,600	61,200	2,060	1,440	10,000	6,700
3-3/16 3-1/4 3-7/16 3-1/2	0.50	0.87	1.71	0.70	2.07	15,300	108,600	1,640	1,145	16,000	10,500
3-15/16 4	0.49	0.87	1.77	0.70	2.14	21,000	154,000	1,530	1,070	22,000	14,600
4-7/16 4-1/2	0.53	0.87	1.63	0.70	1.97	25,800	188,400	1,360	950	27,000	----
4-15/16 5	0.47	0.87	1.83	0.70	2.21	35,500	266,000	1,200	840	35,000	----
5-7/16 5-15/16 6	0.49	0.87	1.76	0.70	2.12	40,700	354,000	915	640	42,400	----
6-7/16 6-1/2 6-15/16 7	0.54	0.87	1.61	0.70	1.95	69,200	574,000	790	550	72,000	----

Comparing Spherical To Taper Roller Bearings: The dynamic capacity C (spherical) and C₉₀ (taper) are not to the same base. To compare basic dynamic capacities, multiply C x .259 and compare to C₉₀.

*C₉₀ - Dynamic capacity based on a rated life of 90 million revolutions or 3000 hours at 500 RPM.

** If load exceeds maximum allowable slip fit radial load, (F_R), line-to-line, to light press fit of shaft required. Application up to maximum slip fit radial load may be applied if recommended shaft tolerances are used.

FEATURES/BENEFITS PAGE B6-3	SPECIFICATION PAGE B6-8	NOMENCLATURE PAGE B6-10	SELECTION/DIMENSIONS PAGE B6-22
--------------------------------	----------------------------	----------------------------	------------------------------------



Type E, Type K, DOUBLE-INTERLOCK and TAF

TABLE 2 - EASY SELECTION TABLE TYPE E, K, DI AND TAF

Shaft Size	L10 Hours Life	Allowable Equivalent Radial Load (Lbs.) at various Revolutions Per Minute																		
		50	100	150	250	500	790	915	1,200	1,360	1,530	1,640	1,750	2,060	2,420	2,730	3,050	3,320	3,820	4,490
1-3/16 1-1/4	10,000	4,143	3,365	2,980	2,557	2,077	1,810	1,732	1,597	1,538	1,485	1,454	1,426	1,358	1,294	1,248	1,207	1,177	1,128	1,075
	30,000	2,980	2,421	2,143	1,839	1,494	1,302	1,246	1,149	1,106	1,068	1,046	1,026	977	931	898	868	846	811	773
	40,000	2,734	2,220	1,966	1,687	1,370	1,194	1,143	1,054	1,015	980	959	941	896	854	823	796	776	744	709
	60,000	2,421	1,966	1,741	1,494	1,213	1,058	1,012	933	899	867	849	833	793	756	729	705	687	659	628
	100,000	2,077	1,687	1,494	1,281	1,041	907	868	800	771	744	729	715	681	648	625	605	590	565	539
1-3/8 1-7/16	10,000	6,618	5,376	4,760	4,084	3,317	2,892	2,767	2,551	2,457	2,372	2,323	2,278	2,169	2,067	1,993	1,928	1,880	1,802	
	30,000	4,760	3,866	3,424	2,937	2,386	2,080	1,990	1,835	1,767	1,706	1,670	1,638	1,560	1,486	1,434	1,387	1,352	1,296	
	40,000	4,366	3,547	3,140	2,694	2,188	1,908	1,826	1,683	1,621	1,565	1,532	1,503	1,431	1,364	1,315	1,272	1,240	1,189	
	60,000	3,866	3,140	2,781	2,386	1,938	1,689	1,616	1,490	1,435	1,385	1,357	1,331	1,267	1,207	1,165	1,126	1,098	1,053	
	100,000	3,317	2,694	2,386	2,047	1,662	1,449	1,387	1,278	1,231	1,189	1,164	1,142	1,087	1,036	999	966	942	903	
1-1/2 1-5/8 1-11/16	10,000	8,537	6,934	6,140	5,268	4,279	3,730	3,569	3,290	3,169	3,059	2,996		2,798	2,666	2,571	2,487	2,425		
	30,000	6,140	4,987	4,416	3,789	3,077	2,683	2,567	2,366	2,279	2,200	2,155	2,113	2,012	1,917	1,849	1,789	1,744		
	40,000	5,632	4,575	4,051	3,475	2,823	2,461	2,355	2,171	2,091	2,018	1,977	1,939	1,846	1,759	1,696	1,641	1,600		
	60,000	4,987	4,051	3,587	3,077	2,500	2,179	2,085	1,922	1,851	1,787	1,750	1,716	1,635	1,557	1,502	1,453	1,416		
	100,000	4,279	3,475	3,077	2,640	2,144	1,869	1,789	1,649	1,588	1,533	1,502	1,473	1,402	1,336	1,289	1,247	1,215		
1-3/4 1-7/8 1-15/16 2	10,000	11,220	9,114	8,070	6,923	5,624	4,902	4,691	4,325	4,165	4,021	3,938	3,862	3,677	3,504	3,379	3,269			
	30,000	8,070	6,555	5,804	4,979	4,045	3,526	3,374	3,110	2,996	2,892	2,832	2,777	2,645	2,520	2,431	2,351			
	40,000	7,403	6,013	5,324	4,568	3,710	3,234	3,095	2,853	2,748	2,653	2,598	2,548	2,426	2,312	2,230	2,157			
	60,000	6,555	5,324	4,714	4,045	3,285	2,864	2,740	2,526	2,433	2,349	2,300	2,256	2,148	2,047	1,974	1,910			
	100,000	5,624	4,568	4,045	3,470	2,818	2,457	2,351	2,167	2,088	2,015	1,974	1,935	1,843	1,756	1,694	1,638			
2-3/16	10,000	11,888	9,656	8,550	7,335	5,958	5,194	4,970	4,582	4,413	4,260	4,172	4,091	3,896	3,712	3,581				
	30,000	8,550	6,945	6,149	5,276	4,285	3,736	3,575	3,295	3,174	3,064	3,001	2,943	2,802	2,670	2,575				
	40,000	7,843	6,371	5,641	4,839	3,931	3,427	3,279	3,023	2,911	2,810	2,752	2,699	2,570	2,449	2,362				
	60,000	6,945	5,641	4,995	4,285	3,481	3,034	2,903	2,677	2,578	2,489	2,437	2,390	2,276	2,169	2,092				
	100,000	5,958	4,839	4,285	3,676	2,986	2,603	2,491	2,296	2,212	2,135	2,091	2,051	1,953	1,861	1,795				
2-1/4 2-7/16 2-1/2	10,000	12,639	10,266	9,090	7,798	6,334	5,522	5,284	4,871	4,692	4,529	4,435	4,350	4,142	3,947					
	30,000	9,090	7,383	6,538	5,609	4,556	3,972	3,800	3,503	3,374	3,257	3,190	3,129	2,979	2,839					
	40,000	8,338	6,773	5,997	5,145	4,179	3,643	3,486	3,214	3,095	2,988	2,926	2,870	2,733	2,604					
	60,000	7,383	5,997	5,310	4,556	3,700	3,226	3,087	2,846	2,741	2,646	2,591	2,541	2,420	2,306					
	100,000	6,334	5,145	4,556	3,908	3,175	2,768	2,648	2,441	2,351	2,270	2,223	2,180	2,076	1,978					
2-11/16 2-3/4 2-15/16 3	10,000	13,348	10,842	9,600	8,236	6,690	5,832	5,580	5,145	4,955	4,783	4,684	4,594	4,375						
	30,000	9,600	7,798	6,905	5,924	4,811	4,194	4,014	3,700	3,564	3,440	3,369	3,304	3,146						
	40,000	8,806	7,153	6,334	5,434	4,414	3,848	3,682	3,394	3,269	3,156	3,090	3,031	2,886						
	60,000	7,798	6,334	5,608	4,811	3,908	3,407	3,260	3,005	2,895	2,794	2,737	2,684	2,556						
	100,000	6,690	5,434	4,811	4,128	3,353	2,923	2,797	2,578	2,483	2,397	2,348	2,302	2,192						

For maximum RPM see Table 1 on page B6-14

In the shaded area, E, DI and TAF mounted units require a line-to-line to light press fit of shaft

In the boxed area, Type K mounted units require a line-to-line to light press fit of shaft

FEATURES/BENEFITS PAGE B6-3	SPECIFICATION PAGE B6-8	NOMENCLATURE PAGE B6-10	SELECTION/DIMENSIONS PAGE B6-22
--------------------------------	----------------------------	----------------------------	------------------------------------



Type E, Type K, DOUBLE-INTERLOCK and TAF

TABLE 2 (continued) - EASY SELECTION TABLE TYPE E, K, DI AND TAF

Shaft Size	L10 Hours Life	Allowable Equivalent Radial Load (Lbs.) at various Revolutions Per Minute																			
		50	100	150	250	500	790	915	1,200	1,360	1,530	1,640	1,750	2,060	2,420	2,730	3,050	3,320	3,820	4,490	
3-3/16 3-1/4 3-7/16 3-1/2	10,000	21,273	17,279	15,300	13,126	10,662	9,295	8,894	8,199	7,897	7,623	7,466	7,322								
	30,000	15,300	12,427	11,004	9,441	7,668	6,685	6,397	5,897	5,680	5,482	5,369	5,266								
	40,000	14,035	11,400	10,094	8,660	7,034	6,132	5,868	5,409	5,210	5,029	4,925	4,830								
	60,000	12,427	10,094	8,938	7,668	6,579	5,430	5,196	4,790	4,613	4,453	4,361	4,277								
	100,000	10,662	8,660	7,668	6,579	5,344	4,658	4,458	4,109	3,958	3,820	3,742	3,670								
3-15/16 4	10,000	29,198	23,716	21,000	18,016	14,634	12,757	12,207	11,254	10,839	10,463										
	30,000	21,000	17,057	15,104	12,958	10,525	9,175	8,780	8,094	7,796	7,525										
	40,000	19,264	15,647	13,855	11,886	9,655	8,417	8,054	7,425	7,151	6,903										
	60,000	17,057	13,855	12,268	10,525	8,549	7,453	7,131	6,574	6,332	6,112										
	100,000	14,634	11,886	10,525	9,030	7,334	6,394	6,118	5,640	5,432	5,244										
4-7/16 4-1/2	10,000	35,872	29,137	25,800	22,134	17,979	15,673	14,998	13,826	13,316											
	30,000	25,800	20,956	18,556	15,919	12,931	11,273	10,787	9,944	9,577											
	40,000	23,667	19,223	17,022	14,603	11,861	10,340	9,895	9,122	8,786											
	60,000	20,956	17,022	15,072	12,931	10,503	9,156	8,761	8,077	7,779											
	100,000	17,979	14,603	12,931	11,093	9,011	7,855	7,517	6,929	6,674											
4-15/16 5	10,000	49,359	40,092	35,500	30,456	24,738	21,566	20,636	19,024												
	30,000	35,500	28,835	25,532	21,905	17,792	15,511	14,842	13,682												
	40,000	32,565	26,451	23,421	20,094	16,321	14,228	13,615	12,551												
	60,000	28,835	23,421	20,739	17,792	14,452	12,599	12,055	11,114												
	100,000	24,738	20,094	17,792	15,264	12,398	10,809	10,343	9,535												
5-7/16 5-15/16 6	10,000	56,589	45,964	40,700	34,917	28,362	24,725	23,659													
	30,000	40,700	33,059	29,272	25,113	20,398	17,783	17,016													
	40,000	37,335	30,325	26,852	23,037	18,712	16,312	15,609													
	60,000	33,059	26,852	23,777	20,398	16,569	14,444	13,821													
	100,000	28,362	23,037	20,398	17,500	14,214	12,392	11,858													
6-7/16 6-1/2 6-15/16 7	10,000	56,589	45,964	40,700	34,917	28,362	24,725	23,659													
	30,000	40,700	33,059	29,272	25,113	20,398	17,783	17,016													
	40,000	37,335	30,325	26,852	23,037	18,712	16,312	15,609													
	60,000	33,059	26,852	23,777	20,398	16,569	14,444	13,821													
	100,000	28,362	23,037	20,398	17,500	14,214	12,392	11,858													

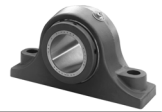
For maximum RPM see Table 1 on page B6-14

In the shaded area, E, DI and TAF mounted units require a line-to-line to light press fit of shaft

In the boxed area, Type K mounted units require a line-to-line to light press fit of shaft

FEATURES/BENEFITS PAGE B6-3	SPECIFICATION PAGE B6-8	NOMENCLATURE PAGE B6-10	SELECTION/DIMENSIONS PAGE B6-22
--------------------------------	----------------------------	----------------------------	------------------------------------

SELECTION



Type E, DOUBLE-INTERLOCK and TAF

TABLE 3 - PERMISSIBLE THRUST LOAD, LBS.*

SHAFT SIZE INCHES	*E		*K/DI, TAF	
	2-Bolt	4-Bolt	2-Bolt	4-Bolt
1-3/16	2000		1400	
1-1/4	2000		1400	
1-3/8	2590		2590	
1-7/16	2590		2590	
1-1/2	2590		2590	
1-5/8	2590		2590	
1-11/16	2590		2590	
1-3/4	3454		3454	
1-7/8	3454		3454	
1-15/16	3454		3454	
2	3454		3454	
2-3/16	3454		3454	
2-1/4	3454	3454	3454	3454
2-7/16	3454	3454	3454	3454
2-1/2	3454	3454	3454	3454
2-11/16	5181	5181	5181	5181
2-3/4	5181	5181	5181	5181
2-15/16	5181	5181	5181	5181
3	5181	5181	5181	5181
3-3/16	5181	5181	4300	5181
3-1/4	5181	5181	4300	5181
3-7/16	5181	5181	4300	5181
3-1/2	5181	5181	4300	5181
3-15/16		6908		6908
4		6908		6908
4-7/16		6908		6908
4-1/2		6908		6908
4-15/16		6908		6908
5		6908		6908
5-7/16		8635		8635
5-15/16		8635		8635
6		8635		8635
6-7/16		12282		12282
6-1/2		12282		12282
6-15/16		12282		12282
7		12282		12282

Note: The limits above apply to set screw shaft mounting or pillow block over turning force. Under heavy thrust loads it is always wise to use shear bars. At all times, the L10 life of the bearing should be checked for proper selection and life requirements. For thrust loads larger than listed or heavy thrust loading on other style housing, contact DODGE Engineering for recommendations.

* Does not include Piloted Flange
 Piloted Flange up to and including 3-1/2" and all sizes of Type K only have one setscrew locking collar and therefore the above listed permissible thrust load values must be decreased by 1/2.

FEATURES/BENEFITS PAGE B6-3	SPECIFICATION PAGE B6-8	NOMENCLATURE PAGE B6-10	SELECTION/DIMENSIONS PAGE B6-22
--------------------------------	----------------------------	----------------------------	------------------------------------



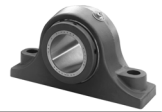
Type E, Type K, DOUBLE-INTERLOCK and TAF

TABLE 4 - K, DI AND TAF MAXIMUM AXIAL EXPANSION (INCHES)

Bore Size (INCHES)	Type K DOUBLE-INTERLOCK		TAF
	Pillow Block	Flange	
1-3/16 - 1-1/4	0.252	--	--
1-3/8 - 1-7/16	0.188	0.187	0.188
1-1/2 - 1-11/16	0.188	0.187	0.188
1-3/4 - 2	0.562	0.187	0.562
2-3/16	0.562	0.187	0.562
2-1/4 - 2-1/2	0.562	0.312	0.562
2-11/16 - 3	0.562	0.312	0.562
3-3/16 - 3-1/2	0.562	0.312	0.562
3-15/16 - 4	0.674	0.312	0.674
4-7/16 - 4-1/2	0.674	0.812	0.674
4-15/16 - 5	0.674	0.812	0.674
5-7/16 - 6	0.500	--	0.875
6-7/16 - 7	0.500	--	0.875

TABLE 5 - DEFINITION OF OPERATING CONDITIONS FOR TAPERED ROLLER BEARINGS

LOW SPEED	UP TO 20% OF MAX. RPM (TABLE 1)
MEDIUM SPEED	OVER 20% TO 80% OF MAX. RPM
HIGH SPEED	OVER 80% OF MAX. RPM
LIGHT LOAD	UP TO 30% OF C_{90} (TABLE 1)
NORMAL LOAD	OVER 30% TO 70% OF C_{90}
HEAVY LOAD	OVER 70% OF C_{90}
LOW TEMPERATURE	-100°F TO 20°F
MEDIUM TEMPERATURE	OVER 20°F TO 200°F
HIGH TEMPERATURE	OVER 200°F TO 300°F
VERY HIGH TEMPERATURE	OVER 300°F TO 400°F



Type E

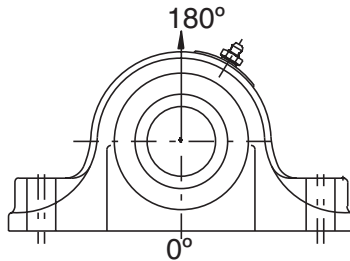


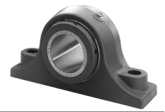
TABLE 6 - HOUSING RATINGS - TYPE E (SOLID HOUSING)

SHAFT SIZE (INCHES)	MAXIMUM RECOMMENDED HOUSING CAP LOADS, LBS.
	GRAY IRON 180°
1-3/16 - 1-1/4	1,600
1-3/8 - 1-7/16	3,150
1-1/2 - 1-11/16	3,000
1-3/4 - 2	5,150
2-3/16	3,500
2-1/4 - 2-1/2	6,550
2-11/16 - 3	7,000
3-3/16 - 3-1/2	15,700
3-15/16 - 4	16,250
4-7/16 - 4-1/2	21,000
4-15/16 - 5	22,860
5-7/16 - 6	43,600
6-7/16 - 7	46,000

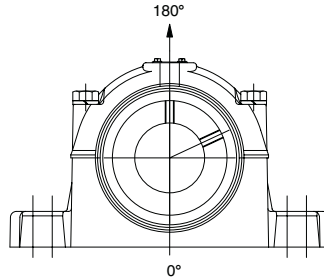
*When utilizing heavy cap loads on pillow block housings, the installation must adhere to the following procedures.

1. The pillow block base bolts must be of **Grade 8 strength with hardened washers and properly tightened** to the mounting structure.
2. The use of stop bars (shear strips) against pillow block where side loads are encountered
3. In all cases where loads are heavy, the L10 life of the bearing should be checked for proper selection and life requirements

FEATURES/BENEFITS PAGE B6-3	SPECIFICATION PAGE B6-8	NOMENCLATURE PAGE B6-10	SELECTION/DIMENSIONS PAGE B6-22
--------------------------------	----------------------------	----------------------------	------------------------------------



Type K, DOUBLE-INTERLOCK and TAF



SHAFT SIZE (INCHES)	MAXIMUM RECOMMENDED HOUSING CAP LOADS, LBS. 180°
1-3/16 - 1-1/4	4,300
1-3/8 - 1-7/16	5,060
1-1/2 - 1-11/16	5,940
1-3/4 - 2	8,660
2-3/16	10,100
2-1/4 - 2-1/2	10,100
2-11/16 - 3	11,220
3-3/16 - 3-1/2	16,170
3-15/16 - 4	19,580
4-7/16 - 4-1/2	20,130
4-15/16 - 5	24,530
5-7/16 - 6	35,200
6-7/16 - 7	56,000

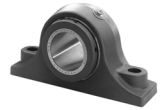
SHAFT SIZE (INCHES)	MAXIMUM RECOMMENDED HOUSING CAP LOADS, LBS. 180°
1-7/16	4,600
1-11/16	5,400
1-15/16	7,875
2-3/16	9,200
2-7/16 - 2-1/2	9,220
2-15/16 - 3	10,200
3-7/16 - 3-1/2	14,700
3-15/16 - 4	17,800
4-7/16 - 4-1/2	18,300
4-15/16 - 5	22,300
5-7/16 - 6	30,000
6-7/16 - 6-1/2	30,000
6-15/16 - 7	48,000

*When utilizing heavy cap loads on pillow block housings, the installation must adhere to the following procedures.

1. The pillow block base bolts must be of **Grade 8 strength with hardened washers and properly tightened** to the mounting structure.
2. The use of stop bars (shear strips) against pillow block where side loads are encountered
3. In all cases where loads are heavy, the L10 life of the bearing should be checked for proper selection and life requirements

FEATURES/BENEFITS PAGE B6-3	SPECIFICATION PAGE B6-8	NOMENCLATURE PAGE B6-10	SELECTION/DIMENSIONS PAGE B6-22
--------------------------------	----------------------------	----------------------------	------------------------------------

SELECTION/DIMENSIONS



Type E, Type K, DOUBLE-INTERLOCK and TAF

DODGE[®]

MOUNTED BEARINGS

APPLICATION DATA SHEET

Instructions: Complete all applicable information and mail or Fax to DODGE at P.O. Box 499, Greenville, SC 29620, Attn: Engineering, Fax 864-2317

Company _____ DIST. USER OEM Date _____
Address _____
Name _____ Phone _____ Fax _____
Type of Equipment (sketch drive on separate sheet) _____

Service Conditions:

Shaft Speed: Normal _____ Maximum _____
Loads: Radial _____ Thrust _____ Shock (frequency) _____
Shaft size: _____ Shaft Tolerance (specify if not commercial) _____
Duty Cycle: Hours/Day _____ Days/Week _____ Weeks/Year _____

Environment:

Ambient Temperature: Summer _____ °F Winter _____ °F
External Heat: Source of Heat _____
Temperature _____ °F Distance from Bearing _____
Air: Clean _____ Contaminated _____ Contamination Type _____
Gas: Clean _____ Contaminated _____ Contamination Type _____
Liquid: Type _____ Concentration _____
Other: (Including washdowns) _____

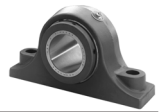
Experience: (If applicable)

Type of Bearing Currently Used: _____
Life Realized _____ Type of Failure _____
Other Pertinent Data _____

L-10 Hours Required: _____
Dimensional Restrictions: Centerline Height _____
Bolt Pattern _____
Other _____

FEATURES/BENEFITS PAGE B6-3	SPECIFICATION PAGE B6-8	NOMENCLATURE PAGE B6-10	SELECTION PAGE B6-11
--------------------------------	----------------------------	----------------------------	-------------------------

SELECTION/DIMENSIONS



D-LOK

Type E Family

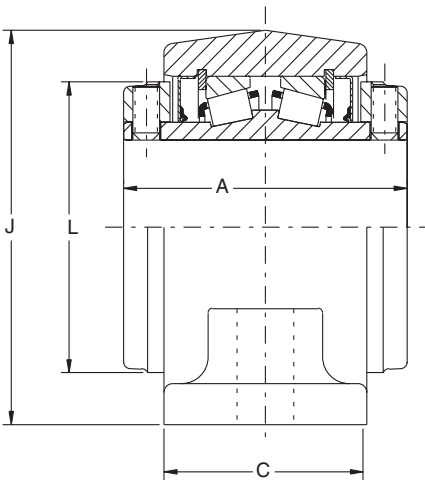
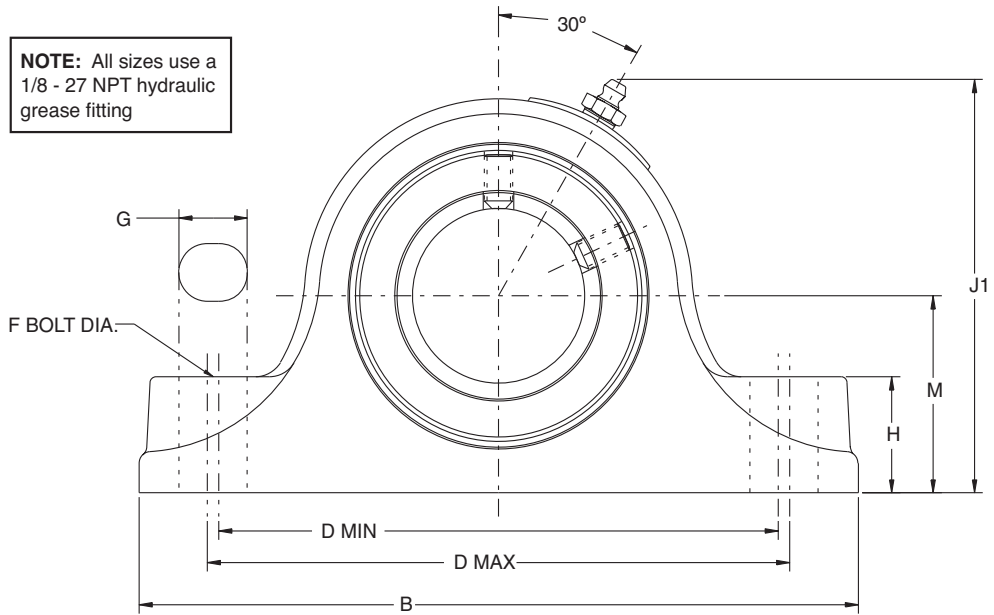
Specialty Tapered

S-2000

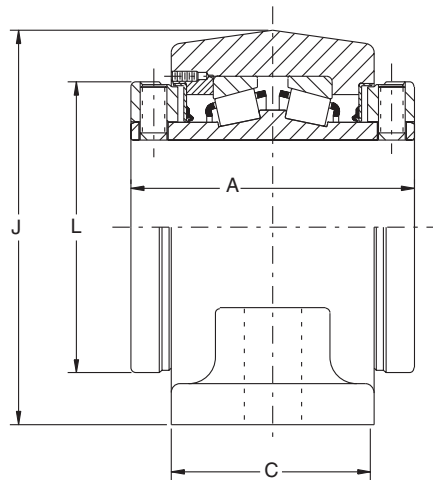
UNISPHERE II

Type E Pillow Block - Inch 2-BOLT BASE

NOTE: All sizes use a 1/8 - 27 NPT hydraulic grease fitting



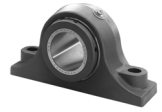
3-3/16" THRU 3" CONSTRUCTION



3-3/16" THRU 3-1/2" CONSTRUCTION

<p>FEATURES/BENEFITS PAGE B6-3</p>	<p>SPECIFICATION PAGE B6-8</p>	<p>NOMENCLATURE PAGE B6-10</p>	<p>SELECTION PAGE B6-11</p>
--	------------------------------------	------------------------------------	---------------------------------

SELECTION/DIMENSIONS



Type E Pillow Block - Inch 2-BOLT BASE

GRAY IRON				CAST STEEL			
SHAFT SIZE INCHES #	PART NUMBER	PART NAME	WEIGHT LBS (APPROX)	SHAFT SIZE INCHES #	PART NUMBER	PART NAME	WEIGHT LBS
1-3/16	023000	P2B-E-103R	4	1-3/16	023047+	SP2B-E-103R	4
1-1/4	023001	P2B-E-104R	4	1-1/4	023048+	SP2B-E-104R	4
1-3/8	023002	P2B-E-106R	7	1-3/8	023049+	SP2B-E-106R	7
1-7/16	023003	P2B-E-107R	7	1-7/16	023050+	SP2B-E-107R	7
1-1/2	023004	P2B-E-108R	10	1-1/2	023051+	SP2B-E-108R	10
1-5/8	023005	P2B-E-110R	10	1-5/8	023052+	SP2B-E-110R	10
1-11/16	023006	P2B-E-111R	10	1-11/16	023053+	SP2B-E-111R	10
1-3/4	023007	P2B-E-112R	12	1-3/4	023054+	SP2B-E-112R	11
1-7/8	023008	P2B-E-114R	12	1-7/8	023055+	SP2B-E-114R	11
1-15/16	023009	P2B-E-115R	12	1-15/16	023056+	SP2B-E-115R	11
2	023010	P2B-E-200R	12	2	023057+	SP2B-E-200R	11
2-3/16	023011	P2B-E-203R	15	2-3/16	023058+	SP2B-E-203R	14
2-1/4	023012	P2B-E-204R	21	2-1/4	023059+	SP2B-E-204R	19
2-7/16	023013	P2B-E-207R	20	2-7/16	023060	SP2B-E-207R	19
2-1/2	023014	P2B-E-208R	20	2-1/2	023061+	SP2B-E-208R	19
2-11/16	023015	P2B-E-211R	29	2-11/16	023062+	SP2B-E-211R	26
2-3/4	023016	P2B-E-212R	28	2-3/4	023063+	SP2B-E-212R	26
2-15/16	023017	P2B-E-215R	27	2-15/16	023064	SP2B-E-215R	26
3	023018	P2B-E-300R	27	3	023065+	SP2B-E-300R	26
3-3/16	023019	P2B-E-303R	48	3-3/16	023066+	SP2B-E-303R	44
3-1/4	023020	P2B-E-304R	47	3-1/4	023067+	SP2B-E-304R	44
3-7/16	023021	P2B-E-307R	46	3-7/16	023068	SP2B-E-307R	44
3-1/2	023022	P2B-E-308R	45	3-1/2	023069+	SP2B-E-308R	44

Consult DODGE For Sizes Not Listed
+ Non-Stock - Consult DODGE For Delivery

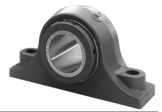
Consult DODGE For Sizes Not Listed
+ Non-Stock - Consult DODGE For Delivery

SHAFT SIZE (Inches)	A	B	C	D MIN	D MAX	F BOLT DIA	G	H	J	J1	L	M
1-3/16 1-1/4	2-3/4	6	1-7/8	4-3/4	4-13/16	1/2	19/32	7/8	3	3-9/32	2-1/4	1-1/2
1-3/8 1-7/16	3	7-3/8	2-1/8	5-5/8	5-7/8	1/2	3/4	1-1/8	3-3/4	4	2-3/4	1-7/8
1-1/2 1-5/8 1-11/16	3-3/8	7-7/8	2-3/8	6-1/8	6-3/8	1/2	3/4	1-1/4	4-1/4	4-15/32	3-3/16	2-1/8
1-3/4 1-7/8 1-15/16 2	3-1/2	8-7/8	2-1/2	6-7/8	7-1/8	5/8	7/8	1-5/16	4-1/2	4-11/16	3-7/16	2-1/4
2-3/16 2-1/4 2-7/16 2-1/2	3-3/4	9-5/8	2-5/8	7-5/8	7-7/8	5/8	7/8	1-1/2	5	5-11/64	3-3/4	2-1/2
2-11/16 2-3/4 2-15/16 3	4-1/2	12	3	9-5/16	9-11/16	3/4	1	1-7/8	6-1/4	6-11/32	4-23/32	3-1/8
3-3/16 3-1/4 3-7/16 3-1/2	5	14	3-1/2	10-13/16	11-3/16	7/8	1-3/16	2-1/4	7-1/2	7-1/2	5-1/2	3-3/4

NOTE: All sizes use a 1/8-27 NPT hydraulic grease fitting

FEATURES/BENEFITS PAGE B6-3	SPECIFICATION PAGE B6-8	NOMENCLATURE PAGE B6-10	SELECTION PAGE B6-11
--------------------------------	----------------------------	----------------------------	-------------------------

SELECTION/DIMENSIONS



D-LOK

Type E Family

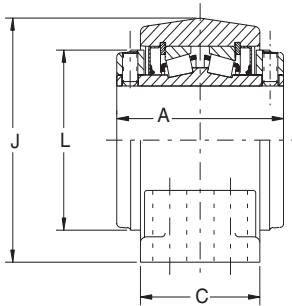
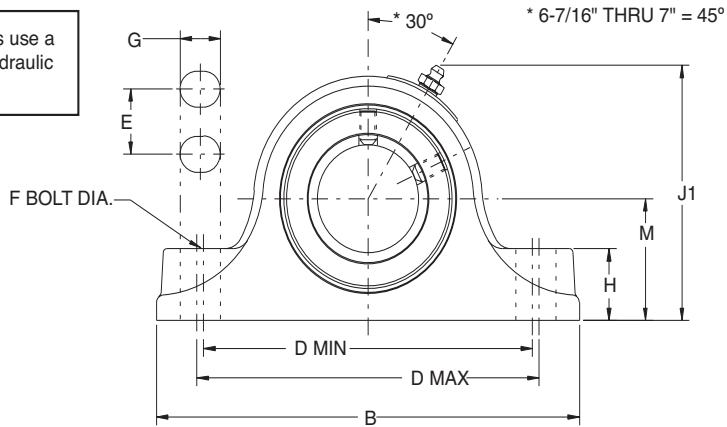
Specialty Tapered

S-2000

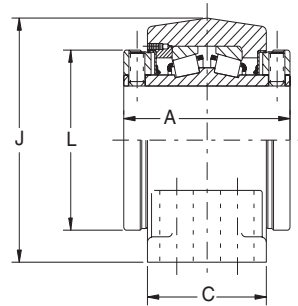
UNISPHERE II

Type E Pillow Block - Inch 4-BOLT BASE

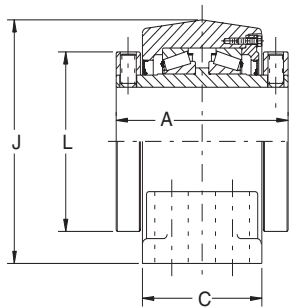
NOTE: All sizes use a 1/8 - 27 NPT hydraulic grease fitting



2-1/4" THRU 3" CONSTRUCTION



3-3/16" THRU 5" CONSTRUCTION



5-7/16" THRU 7" CONSTRUCTION

<p>FEATURES/BENEFITS PAGE B6-3</p>	<p>SPECIFICATION PAGE B6-8</p>	<p>NOMENCLATURE PAGE B6-10</p>	<p>SELECTION PAGE B6-11</p>
--	------------------------------------	------------------------------------	---------------------------------

SELECTION/DIMENSIONS



Type E Pillow Block - Inch 4-BOLT BASE

GRAY IRON			
SHAFT SIZE INCHES #	PART NUMBER	PART NAME	WEIGHT LBS (APPROX)
2-1/4	023023	P4B-E-204R	20
2-7/16	023024	P4B-E-207R	20
2-1/2	023025	P4B-E-208R	19
2-11/16	023026	P4B-E-211R	30
2-3/4	023027	P4B-E-212R	28
2-15/16	023028	P4B-E-215R	28
3	023029+	P4B-E-300R	28
3-3/16	023030+	P4B-E-303R	47
3-1/4	023031	P4B-E-304R	47
3-7/16	023032	P4B-E-307R	46
3-1/2	023033	P4B-E-308R	45
3-15/16	023690	P4B-E-315R	69
4	023691	P4B-E-400R	69
4-7/16	023692	P4B-E-407R	85
4-1/2	023693	P4B-E-408R	85
4-15/16	023694	P4B-E-415R	134
5	023695	P4B-E-500R	133
5-7/16	023040	P4B-E-507R	230
5-15/16	023041	P4B-E-515R	250
6	023042	P4B-E-600R	245
6-7/16	023043+	P4B-E-607R	356
6-1/2	023044	P4B-E-608R	350
6-15/16	023045	P4B-E-615R	340
7	023046+	P4B-E-700R	335

Consult DODGE For Sizes Not Listed
+ Non-stock -- Consult DODGE For Delivery

CAST STEEL			
SHAFT SIZE INCHES #	PART NUMBER	PART NAME	WEIGHT LBS
2-1/4	-----	-----	-----
2-7/16	-----	-----	-----
2-1/2	-----	-----	-----
2-11/16	-----	-----	-----
2-3/4	-----	-----	-----
2-15/16	-----	-----	-----
3	-----	-----	-----
3-3/16	-----	-----	-----
3-1/4	-----	-----	-----
3-7/16	-----	-----	-----
3-1/2	-----	-----	-----
3-15/16	023070	SP4B-E-315R	65
4	023071	SP4B-E-400R	65
4-7/16	023072	SP4B-E-407R	81
4-1/2	023073	SP4B-E-408R	81
4-15/16	023074	SP4B-E-415R	132
5	023075	SP4B-E-500R	132
5-7/16	-----	-----	-----
5-15/16	-----	-----	-----
6	-----	-----	-----
6-7/16	-----	-----	-----
6-1/2	-----	-----	-----
6-15/16	-----	-----	-----
7	-----	-----	-----

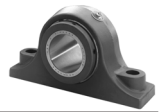
Consult DODGE For Sizes Not Listed
+ Non-stock -- Consult DODGE For Delivery

SHAFT SIZE INCHES	A	B	C*	D		E	F BOLT DIA	G	H	J1	J	L	M
				MIN	MAX								
2-1/4													
2-7/16	4	10-1/2	3-1/2	8-5/16	8-11/16	1-7/8	5/8	7/8	1-5/8	5-1/2	5-5/8	4-1/16	2-3/4
2-1/2													
2-11/16													
2-3/4	4-1/2	12	4	9-3/16	9-13/16	2-1/8	5/8	1	1-7/8	6-1/4	6-11/32	4-23/32	3-1/8
2-15/16													
3													
3-3/16													
3-1/4	5	13-1/2	4-1/2	10-3/4	11-1/4	2-3/8	3/4	1-3/16	2-1/4	7-1/2	7-1/2	5-1/2	3-3/4
3-7/16													
3-1/2													
3-15/16	6-1/4	15-1/4	4-1/2	12-1/4	12-3/4	2-1/4	3/4	1-1/8	2-7/16	8-1/2	8-7/16	6	4-1/4
4													
4-7/16	6-3/4	16-5/8	4-5/8	13-1/4	13-3/4	2-1/2	3/4	1-1/8	2-3/4	9-3/8	9-9/32	6-29/64	4-3/4
4-1/2													
4-15/16	7-1/4	18-1/2	5-1/8	15-1/4	15-3/4	2-7/8	7/8	1-1/4	3	10-7/8	10-11/16	7-29/64	5-1/2
5													
5-7/16													
5-15/16	9	22	6-1/4	17-3/8	19-1/8	3-3/4	1	2	3-1/4	13-3/16	----	9-3/8	6-11/16
6													
6-7/16													
6-1/2	10-1/2	26	7-1/8	21-1/4	23-1/4	4-5/8	1	2	3-11/16	14-15/16	----	11-3/8	7-1/2
6-15/16													
7													

NOTE: All sizes use a 1/8-27 NPT hydraulic grease fitting

FEATURES/BENEFITS PAGE B6-3	SPECIFICATION PAGE B6-8	NOMENCLATURE PAGE B6-10	SELECTION PAGE B6-11
--------------------------------	----------------------------	----------------------------	-------------------------

SELECTION/DIMENSIONS



D-LOK

Type E Family

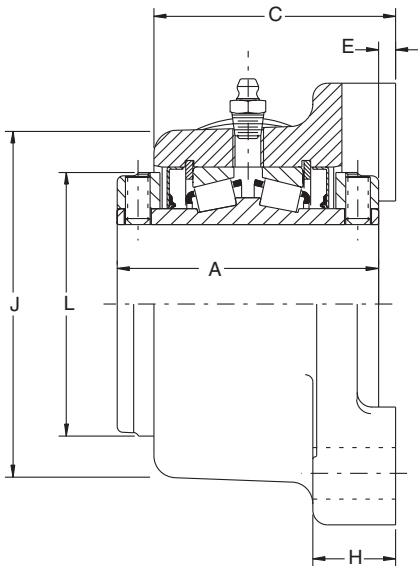
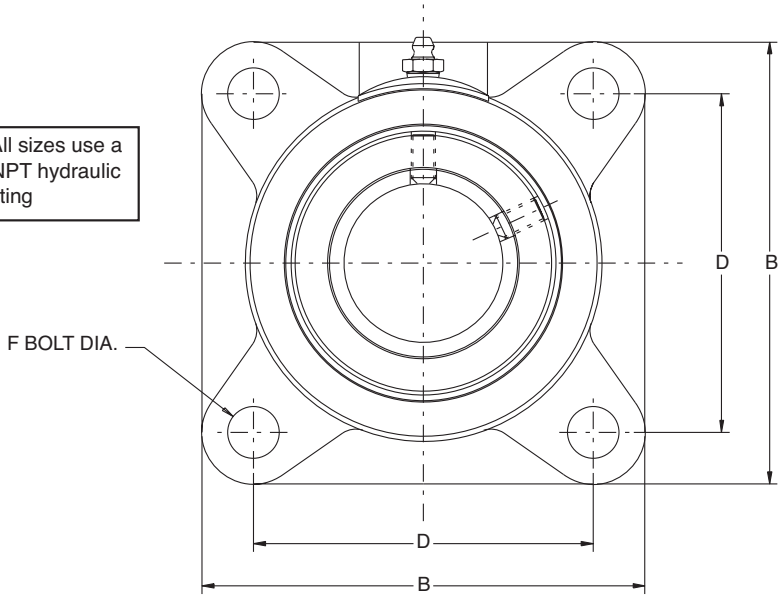
Specialty Tapered

S-2000

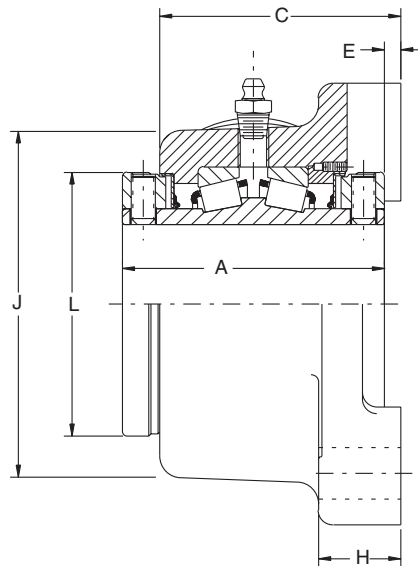
UNISPHERE II

Type E Flange Bearing - Inch 4-BOLT FLANGE

NOTE: All sizes use a 1/8 - 27 NPT hydraulic grease fitting



1-3/16" THRU 3" CONSTRUCTION



3-3/16" THRU 4-1/2" CONSTRUCTION

<p>FEATURES/BENEFITS PAGE B6-3</p>	<p>SPECIFICATION PAGE B6-8</p>	<p>NOMENCLATURE PAGE B6-10</p>	<p>SELECTION PAGE B6-11</p>
--	------------------------------------	------------------------------------	---------------------------------

SELECTION/DIMENSIONS



Type E Flange Bearing - Inch 4-BOLT FLANGE

GRAY IRON			
SHAFT SIZE INCHES #	PART NUMBER	PART NAME	WEIGHT LBS (APPROX)
1-3/16	023093	F4B-E-103R	4
1-1/4	023094	F4B-E-104R	4
1-3/8	023095	F4B-E-106R	7
1-7/16	023096	F4B-E-107R	7
1-1/2	023097	F4B-E-108R	11
1-5/8	023098	F4B-E-110R	11
1-11/16	023099	F4B-E-111R	11
1-3/4	023100	F4B-E-112R	12
1-7/8	023101	F4B-E-114R	12
1-15/16	023102	F4B-E-115R	12
2	023103	F4B-E-200R	12
2-3/16	023104	F4B-E-203R	15
2-1/4	023105	F4B-E-204R	21
2-7/16	023106	F4B-E-207R	20
2-1/2	023107	F4B-E-208R	19
2-11/16	023108	F4B-E-211R	28
2-3/4	023109	F4B-E-212R	28
2-15/16	023110	F4B-E-215R	27
3	023111	F4B-E-300R	26
3-3/16	023112	F4B-E-303R	52
3-1/4	023113+	F4B-E-304R	51
3-7/16	023114	F4B-E-307R	50
3-1/2	023115	F4B-E-308R	50
3-15/16	023116	F4B-E-315R	75
4	023117	F4B-E-400R	75
4-7/16	023118	F4B-E-407R	90
4-1/2	023119	F4B-E-408R	90

Consult DODGE For Sizes Not Listed.
+ Non-stock -- Consult DODGE For Delivery

SHAFT SIZE INCHES	A	B	C	D	E	F BOLT	H	J	L
1-3/16 1-1/4	2-3/4	3-3/4	2-11/32	2-7/8	1/16	3/8	1	2-15/16	2-1/4
1-3/8 1-7/16	3	4-5/8	2-19/32	3-1/2	1/16	1/2	1-1/16	3-1/2	2-3/4
1-1/2 1-5/8 1-11/16	3-3/8	5-3/8	2-31/32	4-1/8	1/8	1/2	1-3/16	4-3/16	3-3/16
1-3/4 1-7/8 1-15/16 2	3-1/2	5-5/8	3-3/32	4-3/8	1/8	1/2	1-3/16	4-7/16	3-7/16
2-3/16 2-1/4 2-7/16 2-1/2	3-3/4	6-1/4	3-9/32	4-7/8	1/8	5/8	1-3/8	4-7/8	3-3/4
2-11/16 2-3/4 2-15/16 3	4-1/2	7-3/4	3-15/16	6	3/16	3/4	1-5/8	6	4-23/32
3-3/16 3-1/4 3-7/16 3-1/2	5	9-1/4	4-1/2	7	1/4	3/4	1-7/8	7-1/4	5-1/2
3-15/16 4	6-1/4	10-1/4	5-5/8	7-3/4	1/4	7/8	2-1/8	8-1/4	6
4-7/16 4-1/2	6-3/4	10-7/8	5-15/16	8-3/4	11/32	7/8	2-7/16	8-3/4	6-29/64

NOTE: All sizes use a 1/8-27 NPT hydraulic grease fitting

FEATURES/BENEFITS PAGE B6-3	SPECIFICATION PAGE B6-8	NOMENCLATURE PAGE B6-10	SELECTION PAGE B6-11
--------------------------------	----------------------------	----------------------------	-------------------------

SELECTION/DIMENSIONS



D-LOK

Type E Family

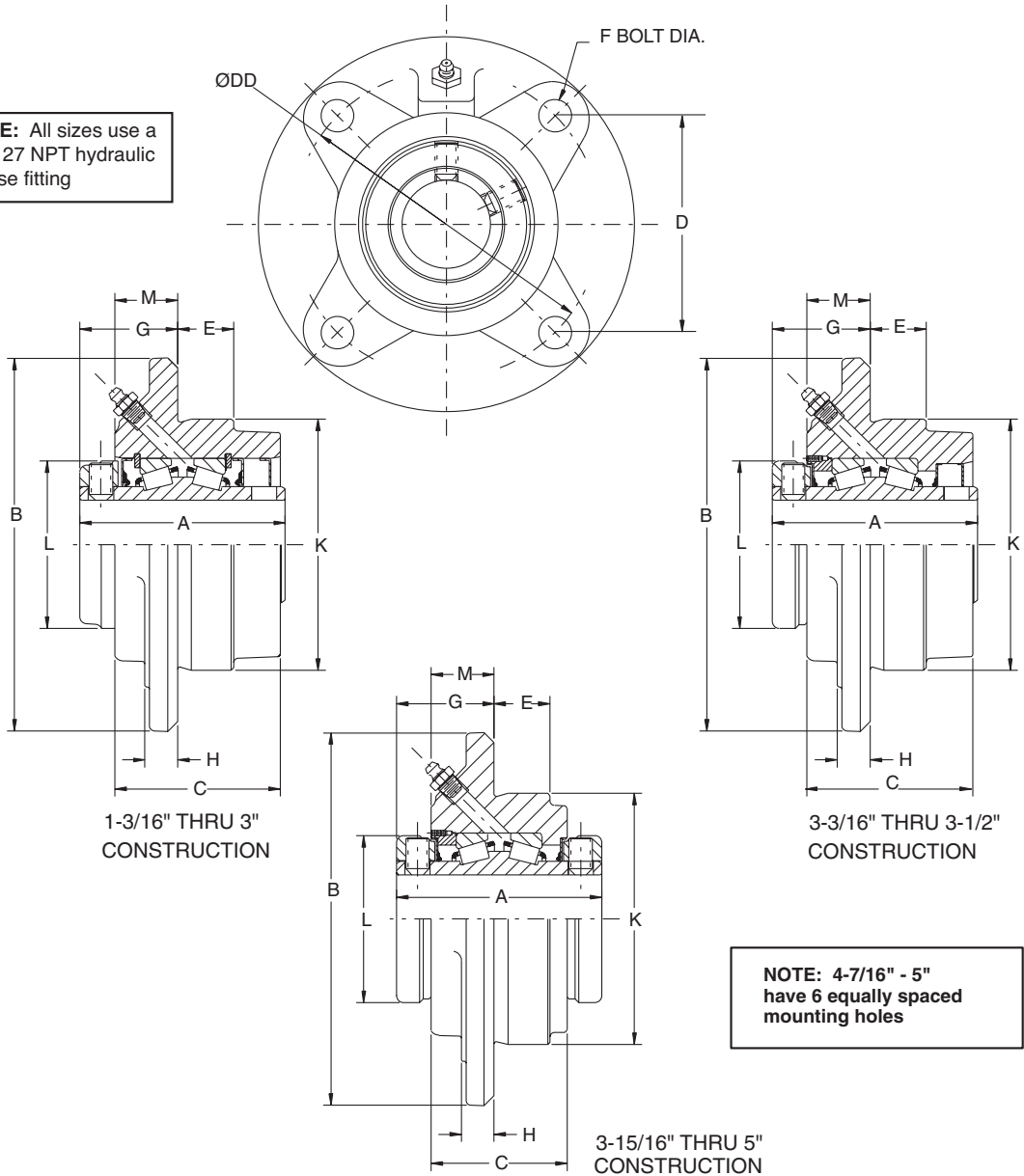
Specialty Tapered

S-2000

UNISPHERE II

Type E Piloted Flange

NOTE: All sizes use a 1/8 - 27 NPT hydraulic grease fitting



NOTE: 4-7/16" - 5" have 6 equally spaced mounting holes

FEATURES/BENEFITS PAGE B6-3	SPECIFICATION PAGE B6-8	NOMENCLATURE PAGE B6-10	SELECTION PAGE B6-11
--------------------------------	----------------------------	----------------------------	-------------------------

SELECTION/DIMENSIONS



Type E Piloted Flange

GRAY IRON			
SHAFT SIZE INCHES #	PART NUMBER	PART NAME	WEIGHT LBS (APPROX)
1-3/16	023120	FC-E-103R	5
1-1/4	023121	FC-E-104R	5
1-3/8	023122	FC-E-106R	7
1-7/16	023123	FC-E-107R	6
1-1/2	023124	FC-E-108R	10
1-5/8	023125	FC-E-110R	9
1-11/16	023126	FC-E-111R	9
1-3/4	023127	FC-E-112R	11
1-7/8	023128+	FC-E-114R	10
1-15/16	023129	FC-E-115R	10
2	023130	FC-E-200R	10
2-3/16	023131	FC-E-203R	14
2-1/4	023132	FC-E-204R	18
2-7/16	023133	FC-E-207R	18
2-1/2	023134	FC-E-208R	17
2-11/16	023135	FC-E-211R	27
2-3/4	023136	FC-E-212R	27
2-15/16	023137	FC-E-215R	25
3	023138	FC-E-300R	25
3-3/16	023139+	FC-E-303R	44
3-1/4	023140+	FC-E-304R	44
3-7/16	023141	FC-E-307R	43
3-1/2	023142	FC-E-308R	42
3-15/16	023143	FC-E-315R	59
4	023144	FC-E-400R	58
4-7/16 ##	023145	FC-E-407R	110
4-1/2 ##	023146	FC-E-408R	110
4-15/16 ##	023147	FC-E-415R	130
5 ##	023148	FC-E-500R	130

Consult DODGE For Sizes Not Listed.
+ Non-stock -- Consult DODGE For Delivery

SHAFT SIZE INCHES	A	B	C	D	ØDD	E	F BOLT#	G	H	K**	L	M
1-3/16 1-1/4	2-3/4	5	2-7/32	2.92	4-1/8	3/4	3/8	1-5/16	7/16	3-3/8	2-1/4	27/32
1-3/8 1-7/16	3	5-1/4	2-15/32	3.09	4-3/8	7/8	3/8	1-1/2	1/2	3-5/8	2-3/4	1-1/32
1-1/2 1-5/8 1-11/16	3-3/8	6-1/8	2-25/32	3.62	5-1/8	1-1/16	7/16	1-9/16	1/2	4-1/4	3-3/16	1-1/32
1-3/4 1-7/8 1-15/16 2	3-1/2	6-3/8	2-29/32	3.80	5-3/8	1-3/16	7/16	1-9/16	9/16	4-1/2	3-7/16	1-1/32
2-3/16	3-3/4	7-1/8	3-3/32	4.24	6	1-3/16	1/2	1-11/16	9/16	5	3-3/4	1-3/32
2-1/4 2-7/16 2-1/2	4	7-5/8	3-5/16	4.60	6-1/2	1-5/16	1/2	1-13/16	5/8	5-1/2	4-1/16	1-3/16
2-11/16 2-3/4 2-15/16 3	4-1/2	8-3/4	3-11/16	5.30	7-1/2	1-1/2	5/8	2	3/4	6-3/8	4-23/32	1-1/4
3-3/16 3-1/4 3-7/16 3-1/2	5	10-1/4	4-3/16	6.10	8-5/8	1-1/4	3/4	2-7/16	15/16	7-3/8	5-1/2	1-11/16
3-15/16 4	6-1/4	10-7/8	4-1/2	6.63	9-3/8	1-1/2	3/4	2-11/16	1	8-1/8	6	1-13/16
4-7/16 4-1/2	6-3/4	13-1/2	4-5/8	##	11-3/4	1-1/2	3/4##	3	1	10-1/4	6-29/64	1-15/16
4-15/16 5	7-1/4	14-3/4	5-1/16	##	12-3/4	1-3/4	7/8##	2-31/32	1-1/4	11	7-29/64	1-7/8

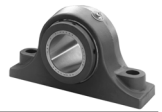
* 1-3/16 To 3-1/2 - One Collar
3-15/16 To 5, - Two Collars

(6) BOLTS EQUALLY SPACED
** +.000 -.002

NOTE: All sizes use a 1/8-27 NPT hydraulic grease fitting

FEATURES/BENEFITS PAGE B6-3	SPECIFICATION PAGE B6-8	NOMENCLATURE PAGE B6-10	SELECTION PAGE B6-11
--------------------------------	----------------------------	----------------------------	-------------------------

SELECTION/DIMENSIONS



D-LOK

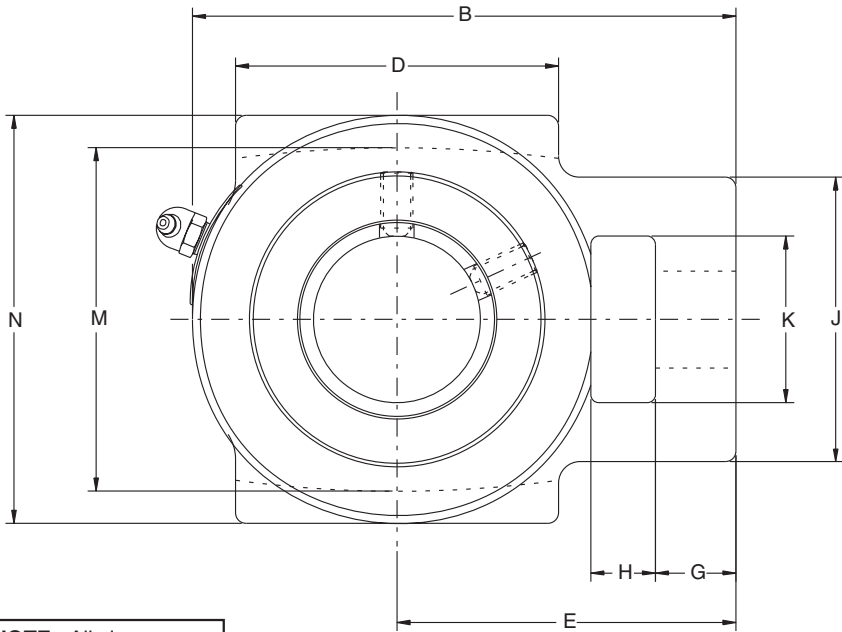
Type E Family

Specialty Tapered

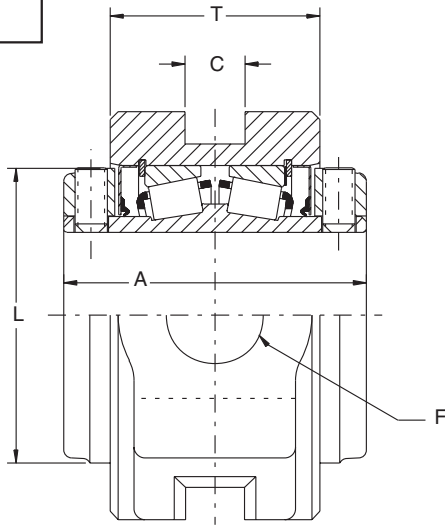
S-2000

UNISPHERE II

Type E Wide Slot Take-Up Unit - Inch



NOTE: All sizes use a 1/8 - 27 NPT hydraulic grease fitting



1-3/8" THRU 3" CONSTRUCTION

FEATURES/BENEFITS PAGE B6-3	SPECIFICATION PAGE B6-8	NOMENCLATURE PAGE B6-10	SELECTION PAGE B6-11
--------------------------------	----------------------------	----------------------------	-------------------------

SELECTION/DIMENSIONS



Type E Wide Slot Take-Up Unit - Inch

GRAY IRON				
SHAFT SIZE # Inches	PART NUMBER	PART NAME	WEIGHT LBS (APPROX)	FRAME Δ
1-3/8	023076+	WSTU-E-106R	8	CP308
1-7/16	023077	WSTU-E-107R	8	
1-1/2	023078	WSTU-E-108R	10	CP400
1-5/8	023079+	WSTU-E-110R	10	
1-11/16	023080	WSTU-E-111R	10	
1-3/4	023081+	WSTU-E-112R	12	CP400
1-7/8	023082+	WSTU-E-114R	12	
1-15/16	023083	WSTU-E-115R	12	
2	023084	WSTU-E-200R	12	
2-3/16	023085	WSTU-E-203R	16	CP408
2-1/4	023086+	WSTU-E-204R	21	CP502
2-7/16	023087	WSTU-E-207R	21	
2-1/2	023088+	WSTU-E-208R	21	
2-11/16	023089+	WSTU-E-211R	30	CP515
2-3/4	023090+	WSTU-E-212R	30	
2-15/16	023091	WSTU-E-215R	30	
3	023092+	WSTU-E-300R	30	

Consult DODGE For Sizes Not Listed.

+ Non-stock -- Consult DODGE For Delivery

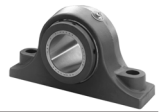
Δ See page B15-20 for CP Take-Up Frame

SHAFT SIZE INCHES	A	B	C	D	E	F SCREW DIA	G	H	J	K	L	M	N	T
1-3/8 1-7/16	3	5-3/32	17/32	2-3/4	3-7/32	3/4	11/16	5/8	2-7/16	1-7/16	2-3/4	3-1/2	4-1/8	2-1/16
1-1/2 1-5/8 1-11/16	3-3/8	6	11/16	3-1/4	3-13/16	1	15/16	3/4	3-5/16	1-15/16	3-3/16	4	4-3/4	2-5/16
1-3/4 1-7/8 1-15/16 2	3-1/2	6-5/16	11/16	3-3/4	3-15/16	1	15/16	3/4	3-5/16	1-15/16	3-7/16	4	4-3/4	2-7/16
2-3/16	3-3/4	7-1/8	13/16	3-3/4	4-5/8	1-1/8	1	1-1/4	3-7/8	2-1/4	3-3/4	4-1/2	5-1/4	2-9/16
2-1/4 2-7/16 2-1/2	4	7-13/16	1-1/16	4-1/2	5-1/16	1-1/4	1-1/16	1-1/4	4-1/4	2-1/2	4-1/16	5-1/8	6	2-3/4
2-11/16 2-3/4 2-15/16 3	4-1/2	9-1/8	1-13/16	4-3/4	5-7/8	1-1/2	1-3/8	1-1/2	4-7/8	2-3/4	4-23/32	5-15/16	6-3/4	3

NOTE: All sizes use a 1/8-27 NPT hydraulic grease fitting

FEATURES/BENEFITS PAGE B6-3	SPECIFICATION PAGE B6-8	NOMENCLATURE PAGE B6-10	SELECTION PAGE B6-11
--------------------------------	----------------------------	----------------------------	-------------------------

SELECTION/DIMENSIONS



D-LOK

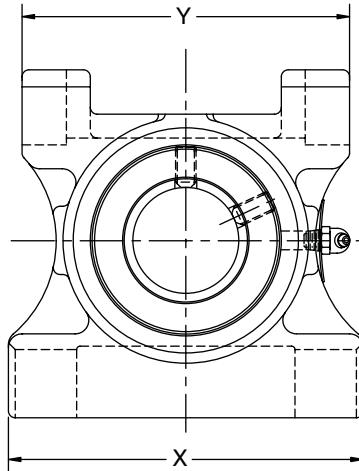
Type E Family

Specialty Tapered

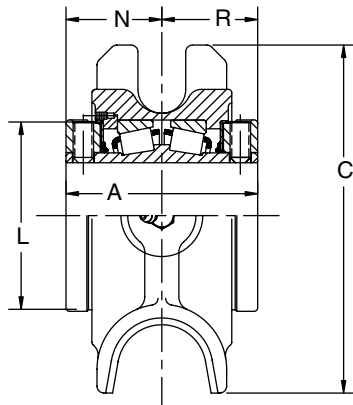
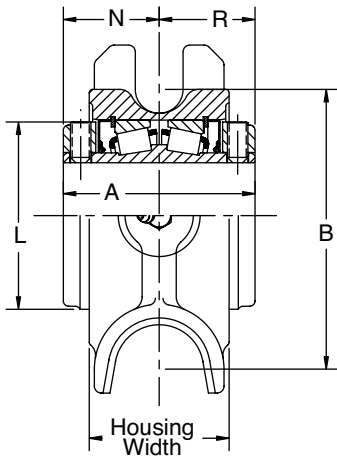
S-2000

UNISPHERE II

Type E TP Take-Up Bearing - Inch



NOTE: All sizes use a 1/8 - 27 NPT hydraulic grease fitting



FEATURES/BENEFITS PAGE B6-3	SPECIFICATION PAGE B6-8	NOMENCLATURE PAGE B6-10	SELECTION PAGE B6-11
--------------------------------	----------------------------	----------------------------	-------------------------

SELECTION/DIMENSIONS



Type E TP Take-Up Bearing - Inch

GRAY IRON				
SHAFT SIZE INCHES #	PART NUMBER	PART NAME	WEIGHT LBS(APPROX)	FRAME SIZE REF.
1-3/4	023149+	TP-E-112R	14	TP10
1-7/8	023150+	TP-E-114R	14	TP10
1-15/16	023151	TP-E-115R	14	TP10
2	023152	TP-E-200R	14	TP10
2-3/16	023153	TP-E-203R	16	TP20
2-1/4	023154+	TP-E-204R	21	TP30
2-7/16	023155	TP-E-207R	21	TP30
2-1/2	023156+	TP-E-208R	21	TP30
2-11/16	023157+	TP-E-211R	29	TP40
2-3/4	023158+	TP-E-212R	29	TP40
2-15/16	023159	TP-E-215R	29	TP40
3	023160+	TP-E-300R	29	TP40
3-3/16	023161+	TP-E-303R	43	TP50
3-1/4	023162+	TP-E-304R	43	TP50
3-7/16	023163	TP-E-307R	42	TP50
3-1/2	023164+	TP-E-308R	42	TP50
3-15/16	023165	TP-E-315R	62	TP60
4	023166+	TP-E-400R	62	TP60

Consult DODGE For Sizes Not Listed.

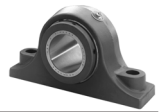
+ Non-stock -- Consult DODGE For Delivery

Shaft Size	A	B	C	L	N	Housing Width	X	Y
1-3/4 1-7/8 1-15/16 2	3-1/2	5-3/16	6-3/8	3-7/16	1-3/4	2-9/16	6-1/2	6
2-3/16	3-3/4	5-13/16	6-7/8	3-3/4	1-7/8	2-9/16	6-3/4	7
2-1/4 2-7/16 2-1/2	4	6-1/4	7-7/16	4-1/16	2	3	7-1/2	7
2-11/16 2-3/4 2-15/16 3	4-1/2	7-3/16	8-5/16	4-23/32	2-1/4	3	8-1/2	8
3-3/16 3-1/4 3-7/16 3-1/2	5	8-5/16	9-5/8	5-1/2	2-1/2	3-3/4	9-1/2	9
3-15/16 4	6-1/4	9-1/16	11	6	3-1/8	4-3/4	11	10-1/2

NOTE: All sizes use a 1/8-27 NPT hydraulic grease fitting

FEATURES/BENEFITS PAGE B6-3	SPECIFICATION PAGE B6-8	NOMENCLATURE PAGE B6-10	SELECTION PAGE B6-11
--------------------------------	----------------------------	----------------------------	-------------------------

SELECTION/DIMENSIONS



D-LOK

Type E Family

Specialty Tapered

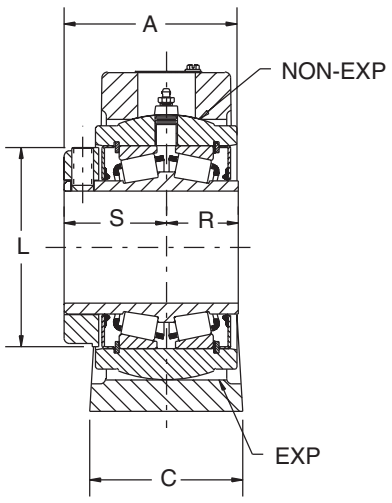
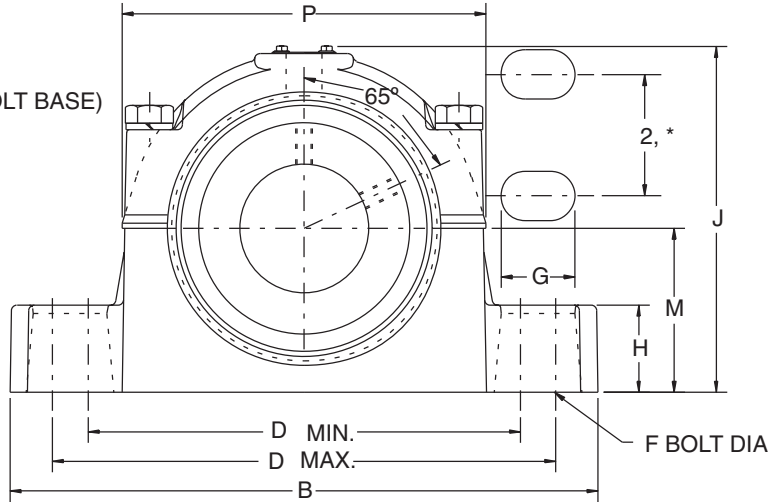
S-2000

UNISPHERE II

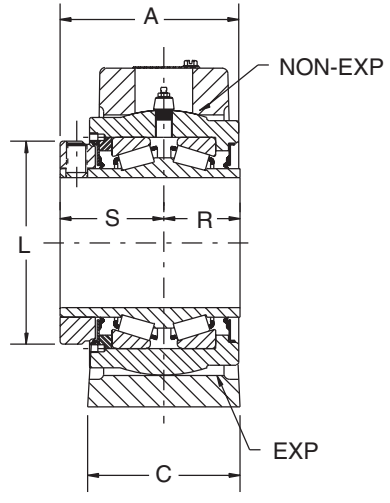
Type K Pillow Blocks 2&4 BOLT BASE - INCH*

- * 1-3/16 THRU 3-1/2 (2 BOLT BASE)
- * 3-15/16 (4 BOLT BASE)

NOTE: All sizes use a 1/8 - 27 NPT hydraulic grease fitting



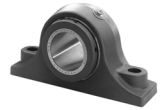
1-3/16" THRU 3"
CONSTRUCTION



3-3/16" THRU 3-15/16"
CONSTRUCTION

FEATURES/BENEFITS PAGE B6-3	SPECIFICATION PAGE B6-8	NOMENCLATURE PAGE B6-10	SELECTION PAGE B6-11
--------------------------------	----------------------------	----------------------------	-------------------------

SELECTION/DIMENSIONS



Type K Pillow Blocks 2&4 BOLT BASE - INCH*

GRAY IRON* NON-EXPANSION			
SHAFT SIZE INCHES #	PART NUMBER	PART NAME	WEIGHT LBS (APPROX)
1-3/16	023167	P2B-K-103R	9
1-1/4	023168	P2B-K-104R	9
1-7/16	023170	P2B-K-107R	11
1-1/2	023171	P2B-K-108R	15
1-5/8	023172+	P2B-K-110R	14
1-11/16	023173	P2B-K-111R	14
1-3/4	023174	P2B-K-112R	20
1-15/16	023175	P2B-K-115R	19
2	023176	P2B-K-200R	19
2-3/16	023177	P2B-K-203R	24
2-1/4	023178	P2B-K-204R	28
2-7/16	023179	P2B-K-207R	28
2-1/2	023180	P2B-K-208R	28
2-11/16	023181	P2B-K-211R	40
2-3/4	023182	P2B-K-212R	40
2-15/16	023183	P2B-K-215R	39
3	023184	P2B-K-300R	39
3-7/16	023186+	P2B-K-307R	67
3-1/2	023187	P2B-K-308R	66
3-15/16 ▲	023188	P4B-K-315R	106

* Furnished Unless Otherwise Specified
Consult DODGE For Sizes Not Listed
+ Non-stock -- Consult DODGE For Delivery

GRAY IRON EXPANSION			
SHAFT SIZE INCHES #	PART NUMBER	PART NAME	WEIGHT LBS (APPROX)
1-3/16	023189	P2B-K-103RE	9
1-1/4	023190+	P2B-K-104RE	9
1-7/16	023192	P2B-K-107RE	11
1-1/2	023193	P2B-K-108RE	15
1-5/8	023194+	P2B-K-110RE	14
1-11/16	023195	P2B-K-111RE	14
1-3/4	023196+	P2B-K-112RE	20
1-15/16	023197	P2B-K-115RE	19
2	023198	P2B-K-200RE	19
2-3/16	023199	P2B-K-203RE	24
2-1/4	023200	P2B-K-204RE	28
2-7/16	023201	P2B-K-207RE	28
2-1/2	023200	P2B-K-208RE	28
2-11/16	023203	P2B-K-211RE	40
2-3/4	023204+	P2B-K-212RE	40
2-15/16	023205	P2B-K-215RE	39
3	023206	P2B-K-300RE	39
3-7/16	023208	P2B-K-307RE	67
3-1/2	023209+	P2B-K-308RE	66
3-15/16 ▲	023210	P4B-K-315RE	106

Consult DODGE For Sizes Not Listed
+ Non-stock -- Consult DODGE For Delivery

SHAFT SIZE INCHES	A	B	C	D		F BOL TDIA	G	H	J	L	M	P	R	S	EXP*
				MIN.	MAX.										
1-3/16															
1-1/4	2-9/32	7-1/2	1-7/8	6	6-3/8	3/8	11/16	1	4-17/32	2-1/4	2-1/8	5	1	1-3/8	3/32
1-3/8	2-35/64	8	2-3/16	6-1/4	6-5/8	1/2	3/4	1-1/4	5-15/64	2-3/4	2-3/8	5-33/64	1-1/32	1-1/2	3/32
1-7/16															
1-1/2															
1-5/8	2-53/64	9	2-3/8	6-7/8	7-5/8	1/2	1	1-3/8	5-3/4	3-3/16	2-5/8	5-13/16	1-9/16	1-11/16	3/32
1-11/16															
1-3/4															
1-15/16	2-61/64	10	2-17/32	7-3/8	8-7/16	5/8	1-19/64	1-1/2	6-17/64	3-7/16	2-7/8	6-23/64	1-13/64	1-3/4	9/32
2															
2-3/16	3-5/32	11	2-21/32	8-1/16	9-1/4	5/8	1-21/64	1-1/2	6-33/64	3-3/4	3	6-61/64	1-1/4	1-7/8	9/32
2-1/4															
2-7/16	3-11/32	12	2-13/16	9-1/4	10-1/4	5/8	1-17/64	1-3/4	7-1/32	4-1/16	3-1/4	7-3/8	1-5/16	2	9/32
2-1/2															
2-11/16															
2-3/4	3-25/32	13-7/16	2-15/16	9-7/8	11-1/2	3/4	1-11/16	2	7-59/64	4-23/32	3-3/4	8-5/16	1-7/16	2-1/4	9/32
2-15/16															
3															
3-3/16															
3-7/16	4-17/64	16	3-7/16	12-13/16	13-13/16	7/8	1-1/2	2-1/4	9-27/64	5-1/2	4-1/2	10-3/32	1-11/16	2-1/2	9/32
3-1/2															
3-15/16▲	5-13/32	17-7/16	4-3/4	13-1/8	14-3/4	3/4	1-45/64	2-3/4	10-27/64	6	5	10-45/64	2-1/8	3-1/8	11/32

*Exp-Total Expansion Divided Equally On Both Sides Of Bearing (Expansion Bearings Only)

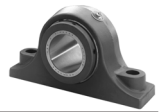
▲ 4 Bolt Base (See Page For Bolts Spacing)

Dowel Hole Locations For Precision Positioning - See Page -

NOTE: All sizes use a 1/8-27 NPT hydraulic grease fitting

FEATURES/BENEFITS PAGE B6-3	SPECIFICATION PAGE B6-8	NOMENCLATURE PAGE B6-10	SELECTION PAGE B6-11
--------------------------------	----------------------------	----------------------------	-------------------------

SELECTION/DIMENSIONS



D-LOK

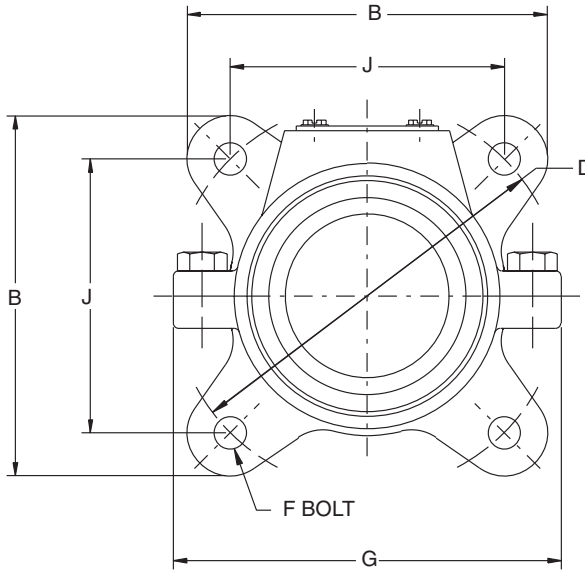
Type E Family

Specialty Tapered

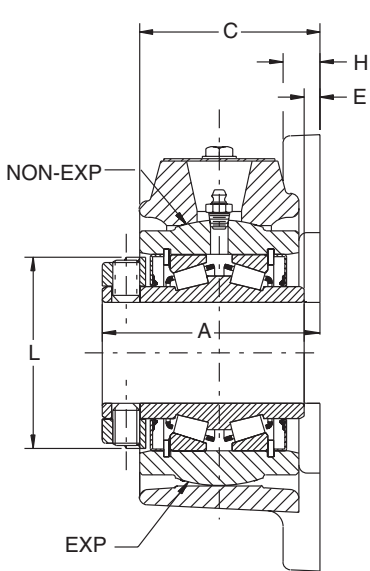
S-2000

UNISPHERE II

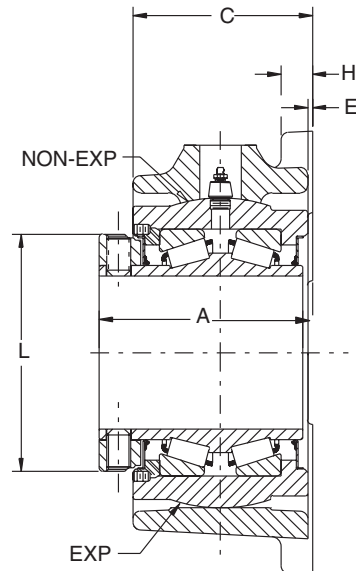
Type K Flange Bearing - Inch



NOTE: All sizes use a 1/8 - 27 NPT hydraulic grease fitting



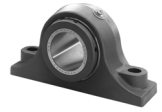
1-3/16" THRU 3" INTERNAL CONSTRUCTION



3-3/16" THRU 3-15/16" INTERNAL CONSTRUCTION

FEATURES/BENEFITS PAGE B6-3	SPECIFICATION PAGE B6-8	NOMENCLATURE PAGE B6-10	SELECTION PAGE B6-11
--------------------------------	----------------------------	----------------------------	-------------------------

SELECTION/DIMENSIONS



Type K Flange Bearing - Inch

DUCTILE IRON - NON-EXPANSION*			
SHAFT SIZE INCHES #	PART NUMBER	PART NAME	WEIGHT LBS (APPROX)
1-1/4	023212+	F4B-K-104R	6
1-7/16	023214	F4B-K-107R	7
1-1/2	023215	F4B-K-108R	12
1-15/16	023219	F4B-K-115R	14
2	023220	F4B-K-200R	14
2-3/16	023221	F4B-K-203R	17
2-7/16	023223	F4B-K-207R	20
2-1/2	023224	F4B-K-208R	20
2-15/16	023227	F4B-K-215R	24
3	023228+	F4B-K-300R	24
3-7/16	023230	F4B-K-307R	45
3-15/16	023232	F4B-K-315R	72

DUCTILE IRON - EXPANSION			
SHAFT SIZE INCHES #	PART NUMBER	PART NAME	WEIGHT LBS (APPROX)
1-1/4	023234+	F4B-K-104RE	6
1-7/16	023236	F4B-K-107RE	7
1-1/2	023237	F4B-K-108RE	12
1-15/16	023241	F4B-K-115RE	14
2	023242	F4B-K-200RE	14
2-3/16	023243	F4B-K-203RE	17
2-7/16	023245	F4B-K-207RE	20
2-1/2	023246+	F4B-K-208RE	20
2-15/16	023249	F4B-K-215RE	24
3	023250+	F4B-K-300RE	24
3-7/16	023252	F4B-K-307RE	45
3-15/16	023254	F4B-K-315RE	72

* Furnished Unless Otherwise Specified

Consult DODGE For Sizes Not Listed.

+ Non-stock -- Consult DODGE For Delivery

Consult DODGE For Sizes Not Listed.

+ Non-stock -- Consult DODGE For Delivery

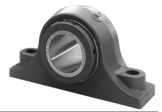
SHAFT SIZE INCHES	A	B	C	D	E	F Bolt Dia.	G	H	J	L	EXP*
1-3/16 1-1/4	2-9/16	5-3/16	2-1/8	5-21/32	3/16	3/8	5-1/4	7/16	4	2-1/4	9/32
1-3/8 1-7/16	2-11/16	5-3/4	2-1/8	6-1/4	5/32	1/2	5-3/4	1/2	4-27/64	2-3/4	3/16
1-1/2 1-5/8 1-11/16	3	6-1/8	2-7/16	6-3/4	5/32	1/2	6-3/4	1/2	4-25/32	3-3/16	3/16
1-3/4 1-15/16 2	3-1/8	6-7/8	2-9/16	7-1/2	5/32	5/8	7-1/4	9/16	5-5/16	3-7/16	3/16
2-3/16 2-1/4 2-7/16 2-1/2	3-5/16	7-3/16	2-23/32	8	5/32	5/8	7-13/16	9/16	5-21/32	3-3/4	3/16
2-11/16 2-3/4 2-15/16 3	4	8-7/8	3-11/32	9-3/4	1/4	3/4	9-1/2	11/16	6-57/64	4-23/32	5/16
3-3/16 3-7/16 3-1/2	4-1/2	10-1/4	3-23/32	11-1/2	1/4	7/8	11-3/8	3/4	8-1/8	5-1/2	5/16
3-15/16	5-1/2	11-7/16	4-5/8	13	1/8	1	12-7/8	13/16	9-3/16	6	5/16

* ExpTotal Expansion Divided Equally On Both Sides Of Bearing (Expansion Bearings Only)

NOTE: All sizes use a 1/8-27 NPT hydraulic grease fitting

FEATURES/BENEFITS PAGE B6-3	SPECIFICATION PAGE B6-8	NOMENCLATURE PAGE B6-10	SELECTION PAGE B6-11
--------------------------------	----------------------------	----------------------------	-------------------------

SELECTION/DIMENSIONS



D-LOK

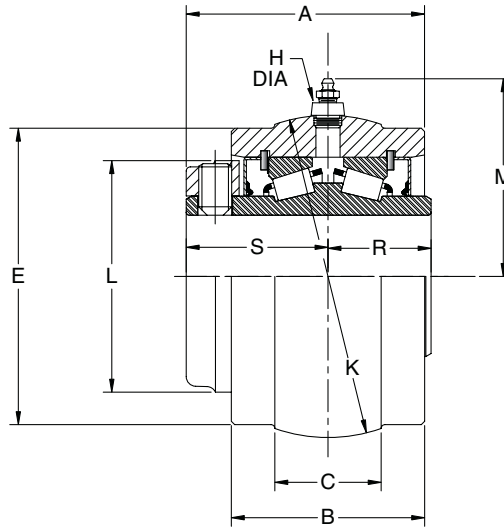
Type E Family

Specialty Tapered

S-2000

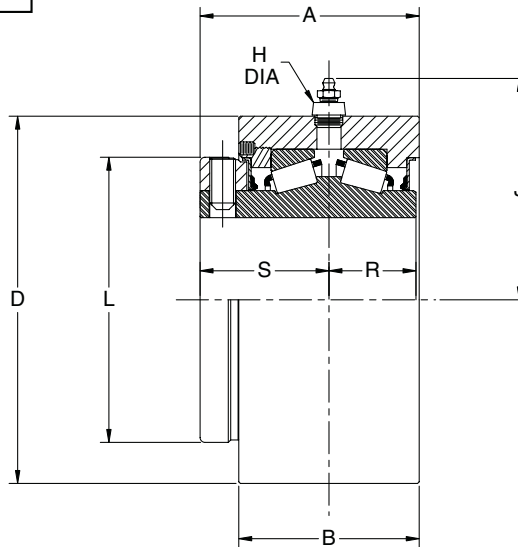
UNISPHERE II

Type K Units - Inch



NOTE: All sizes use a 1/8 - 27 NPT hydraulic grease fitting

S-1 UNIT
1-3/16" THRU 3" CONSTRUCTION



B-1 UNIT
3-3/16" THRU 3-15/16" CONSTRUCTION

FEATURES/BENEFITS PAGE B6-3	SPECIFICATION PAGE B6-8	NOMENCLATURE PAGE B6-10	SELECTION PAGE B6-11
--------------------------------	----------------------------	----------------------------	-------------------------

SELECTION/DIMENSIONS



Type K Units - Inch

TYPE S-1 UNITS -- GRAY IRON			
SHAFT SIZE INCHES #	PART NUMBER	PART NAME	WEIGHT LBS (APPROX)
1-3/16	023271	S1U-K-103R	3
1-1/4	023272+	S1U-K-104R	3
1-3/8	023273+	S1U-K-106R	4
1-7/16	023274	S1U-K-107R	4
1-1/2	023275	S1U-K-108R	5
1-5/8	023276+	S1U-K-110R	5
1-11/16	023277	S1U-K-111R	5
1-3/4	023278+	S1U-K-112R	7
1-15/16	023279	S1U-K-115R	7
2	023280	S1U-K-200R	7
2-3/16	023281	S1U-K-203R	9
2-1/4	023282+	S1U-K-204R	11
2-7/16	023283	S1U-K-207R	11
2-1/2	023284+	S1U-K-208R	11
2-11/16	023285+	S1U-K-211R	15
2-3/4	023286+	S1U-K-212R	15
2-15/16	023287	S1U-K-215R	15
3	023288	S1U-K-300R	15
3-3/16	023289+	S1U-K-303R	28
3-7/16	023290	S1U-K-307R	28
3-1/2	023291+	S1U-K-308R	28
3-15/16	023292	S1U-K-315R	40

Consult DODGE For Sizes Not Listed.
+ Non-stock -- Consult DODGE For Delivery

TYPE B-1 UNITS -- GRAY IRON			
SHAFT SIZE INCHES #	PART NUMBER	PART NAME	WEIGHT LBS (APPROX)
1-3/16	-----	B1U-K-103R	3
1-1/4	-----	B1U-K-104R	3
1-3/8	023293+	B1U-K-106R	4
1-7/16	023294+	B1U-K-107R	4
1-1/2	023295+	B1U-K-108R	5
1-5/8	023296+	B1U-K-110R	5
1-11/16	023297+	B1U-K-111R	5
1-3/4	023298+	B1U-K-112R	7
1-15/16	023299+	B1U-K-115R	7
2	023300+	B1U-K-200R	7
2-3/16	023301+	B1U-K-203R	9
2-1/4	023302+	B1U-K-204R	11
2-7/16	023303+	B1U-K-207R	11
2-1/2	023304+	B1U-K-208R	11
2-11/16	023305+	B1U-K-211R	15
2-3/4	023306+	B1U-K-212R	15
2-15/16	023307+	B1U-K-215R	15
3	023308+	B1U-K-300R	15
3-3/16	023309+	B1U-K-303R	28
3-7/16	023310+	B1U-K-307R	28
3-1/2	023311+	B1U-K-308R	28
3-15/16	023312+	B1U-K-315R	40

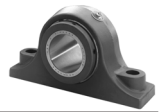
Consult DODGE For Sizes Not Listed.
+ Non-stock -- Consult DODGE For Delivery

SHAFT SIZE INCHES	A	B	C	D *	E%		H	J	K **	L	M	R	S
					MACHINE SIDE	CAST SIDE							
1-3/16 1-1/4	2-5/16	1-7/8	1-1/32	----	2.813	3-1/8	7/16	----	3.125	2-1/4	2-1/32	1	1-3/8
1-3/8 1-7/16	2-17/32	2-1/16	1-5/32	3-7/16	3.250	3-5/16	11/16	2-5/8	3.625	2-3/4	2-5/8	1-1/32	1-1/2
1-1/2 1-5/8 1-11/16	2-27/32	2-5/16	1-3/16	3-15/16	3.750	3-13/16	11/16	2-7/8	4.125	3-3/16	2-13/16	1-5/32	1-11/16
1-3/4 1-15/16 2	2-31/32	2-7/16	1-1/2	4-1/4	4.125	4-3/16	11/16	3	4.562	3-7/16	3-1/16	1-13/64	1-3/4
2-3/16 2-1/4	3-5/32	2-9/16	1-9/16	4-5/8	4.500	4-9/16	11/16	3-1/4	5.000	3-3/4	3-1/4	1-1/4	1-7/8
2-7/16 2-1/2	3-3/8	2-3/4	1-7/16	5	4.812	4-7/8	11/16	3-7/16	5.186	4-1/16	3-3/8	1-5/16	2
2-11/16 2-3/4 2-15/16 3	3-3/4	3	1-7/8	5-7/8	5.563	5-5/8	11/16	3-7/8	6.061	4-23/32	3-13/16	1-7/16	2-1/4
3-3/16 3-7/16 3-1/2	4-1/4	3-1/2	2	7-1/8	6.813	6-7/8	11/16	4-1/2	7.373	5-1/2	4-1/2	1-11/16	2-1/2
3-15/16	5-3/8	4-1/2	2-3/8	7-7/8	7.438	7-1/2	15/16	5-1/2	7.997	6	5-5/32	2-1/8	3-1/8

* +.000 -.002," % Machined side of unit is on collar side only. **NOTE:** All sizes use a 1/8-27 NPT hydraulic grease fitting
 ** +.000 -.001 SIZES 1-3/16 THRU 3,"
 ±.0005, SIZES 3-3/16 THRU 3-15/16,"
 ALL DIMENSIONS SHOWN IN INCHES

FEATURES/BENEFITS PAGE B6-3	SPECIFICATION PAGE B6-8	NOMENCLATURE PAGE B6-10	SELECTION PAGE B6-11
--------------------------------	----------------------------	----------------------------	-------------------------

SELECTION/DIMENSIONS



D-LOK

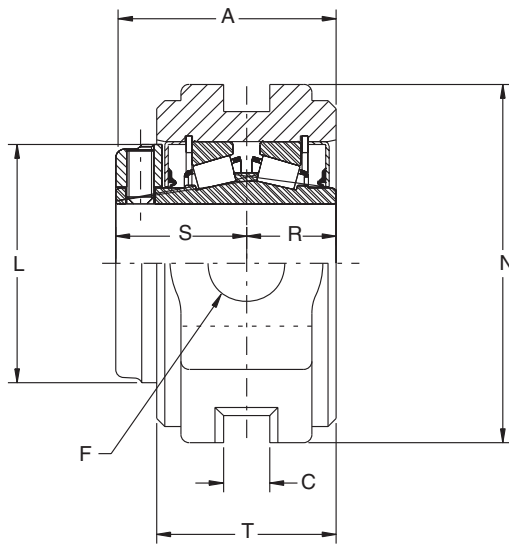
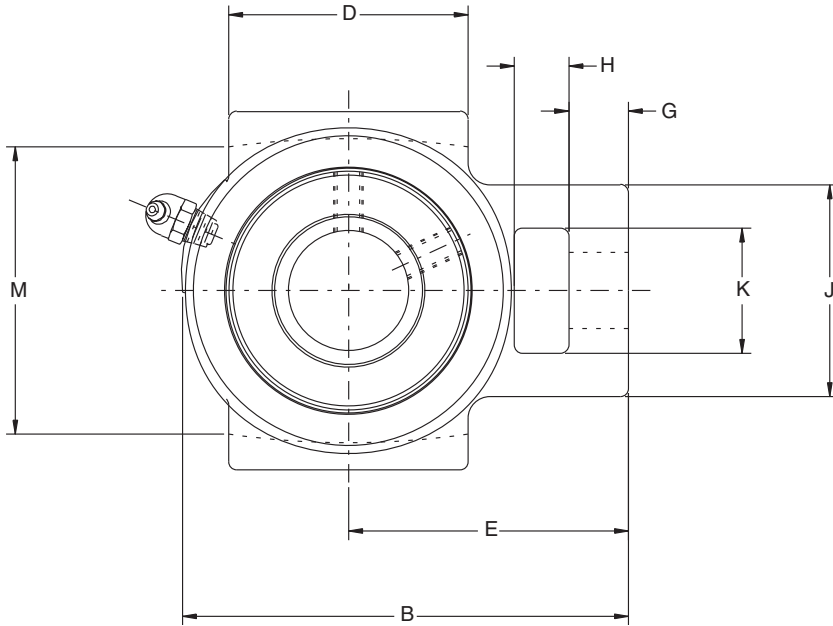
Type E Family

Specialty Tapered

S-2000

UNISPHERE II

Type K Wide Slot Take-Up Unit - Inch



NOTE: All sizes use a 1/8 - 27 NPT hydraulic grease fitting

1-3/8" THRU 3" CONSTRUCTION

FEATURES/BENEFITS PAGE B6-3	SPECIFICATION PAGE B6-8	NOMENCLATURE PAGE B6-10	SELECTION PAGE B6-11
--------------------------------	----------------------------	----------------------------	-------------------------

SELECTION/DIMENSIONS



Type K Wide Slot Take-Up Unit - Inch

GRAY IRON				
SHAFT SIZE INCHES #	PART NUMBER	PART NAME	WEIGHT LBS (APPROX)	CP FRAME SIZE
1-7/16	023256+	WSTU-K-107R	8	CP308
1-15/16	023261	WSTU-K-115R	11	CP400
2-3/16	023263	WSTU-K-203R	15	CP408
2-7/16	023265	WSTU-K-207R	20	CP502
2-1/2	023266	WSTU-K-208R	20	
2-15/16	023269	WSTU-K-215R	28	CP515
3	023270	WSTU-K-300R	28	

Consult DODGE For Sizes Not Listed.

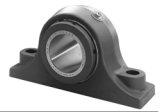
+ Non-stock -- Consult DODGE For Delivery

SHAFT SIZE Inches	A	B	C	D	E	F SCREW DIA	G	H	J	K	L	M	N	R	S	T
1-7/16	2-17/32	5-3/32	17/32	2-3/4	3-7/32	3/4	11/16	5/8	2-7/16	1-7/16	2-3/4	3-1/2	4-1/8	1-1/32	1-1/2	2-1/16
1-15/16	2-31/32	6-5/16	11/16	3-3/4	3-15/16	1	15/16	3/4	3-5/16	1-15/16	3-7/16	4	4-3/4	1-13/64	1-3/4	2-7/16
2-3/16	3-5/32	7-1/8	13/16	3-3/4	4-5/8	1-1/8	1	1-1/4	3-7/8	2-1/4	3-3/4	4-1/2	5-1/4	1-1/4	1-7/8	2-9/16
2-7/16	3-3/8	7-13/16	1-1/16	4-1/2	5-1/16	1-1/2	1-1/16	1-1/4	4-1/4	2-1/2	4-1/16	5-1/8	6	1-5/16	2	2-3/4
2-1/2																
2-15/16	3-3/4	9-1/8	1-13/16	4-3/4	5-7/8	1-1/2	1-3/8	1-1/2	4-7/8	2-3/4	4-23/32	5-15/16	6-3/4	1-7/16	2-1/4	3
3																

NOTE: All sizes use a 1/8-27 NPT hydraulic grease fitting

FEATURES/BENEFITS PAGE B6-3	SPECIFICATION PAGE B6-8	NOMENCLATURE PAGE B6-10	SELECTION PAGE B6-11
--------------------------------	----------------------------	----------------------------	-------------------------

SELECTION/DIMENSIONS



D-LOK

Type E Family

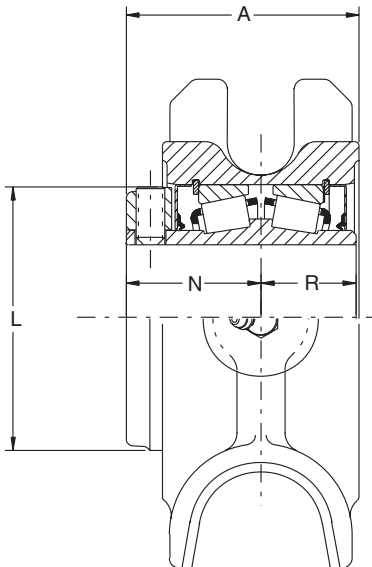
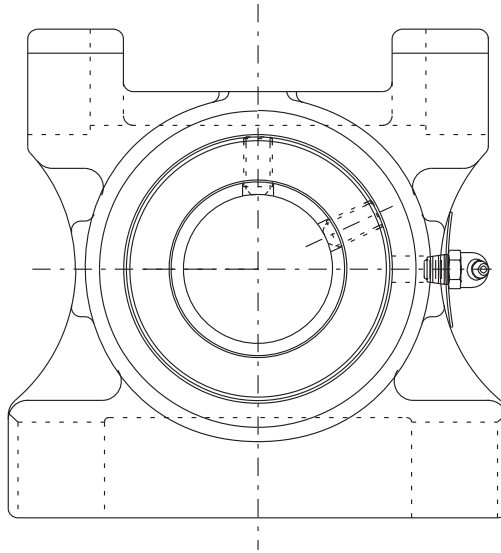
Specialty Tapered

S-2000

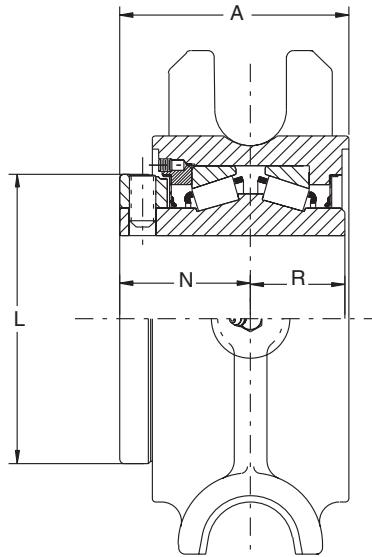
UNISPHERE II

Type K TP Take-Up Bearing - Inch

NOTE: All sizes use a 1/8 - 27 NPT hydraulic grease fitting



1-3/16" THRU 3" INTERNAL CONSTRUCTION



3-3/16" THRU 3-15/16" INTERNAL CONSTRUCTION

<p>FEATURES/BENEFITS PAGE B6-3</p>	<p>SPECIFICATION PAGE B6-8</p>	<p>NOMENCLATURE PAGE B6-10</p>	<p>SELECTION PAGE B6-11</p>
--	------------------------------------	------------------------------------	---------------------------------

SELECTION/DIMENSIONS



Type K TP Take-Up Bearing - Inch

GRAY IRON			
SHAFT SIZE INCHES #	PART NUMBER	PART NAME	WEIGHT LBS (APPROX)
1-15/16	023314	TP-K-115R	13
2-3/16	023316	TP-K-203R	16
2-7/16	023318	TP-K-207R	20
2-15/16	023322	TP-K-215R	27
3-7/16	023325	TP-K-307R	40
3-15/16	023327	TP-K-315R	59

Consult DODGE For Sizes Not Listed.

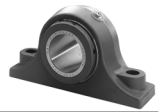
+ Non-stock -- Consult DODGE For Delivery

SHAFT SIZE INCHES	FRAME SIZE REF.	A	L	N	R
1-15/16	TP10	3-1/32	3-7/16	1-3/4	1-7/32
2-3/16	TP20	3-3/16	3-3/4	1-7/8	1-1/4
2-7/16	TP30	3-1/2	4-1/16	2	1-5/16
2-15/16	TP40	3-3/4	4-23/32	2-1/4	1-7/16
3-7/16	TP50	4-9/32	5-1/2	2-13/32	1-25/32
3-15/16	TP60	5-1/2	6	3-1/8	2-1/8

NOTE: All sizes use a 1/8-27 NPT hydraulic grease fitting

FEATURES/BENEFITS PAGE B6-3	SPECIFICATION PAGE B6-8	NOMENCLATURE PAGE B6-10	SELECTION PAGE B6-11
--------------------------------	----------------------------	----------------------------	-------------------------

SELECTION/DIMENSIONS



D-LOK

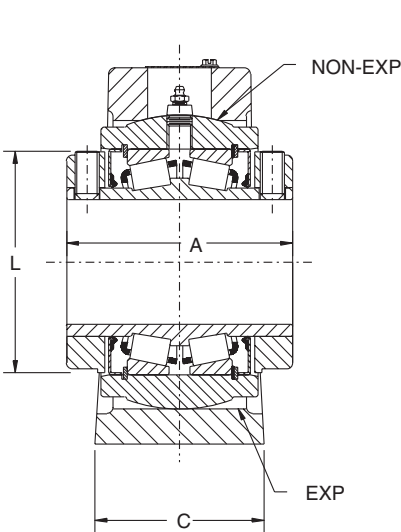
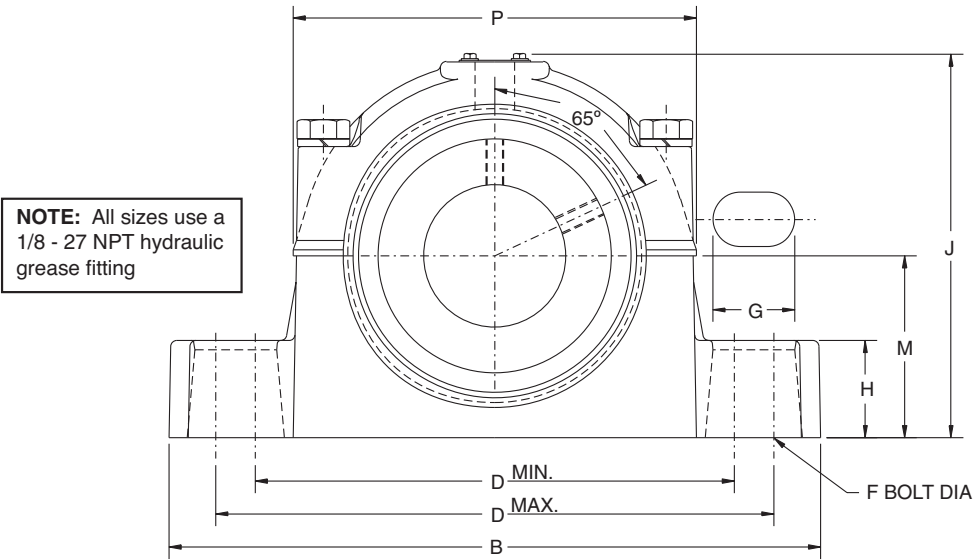
Type E Family

Specialty Tapered

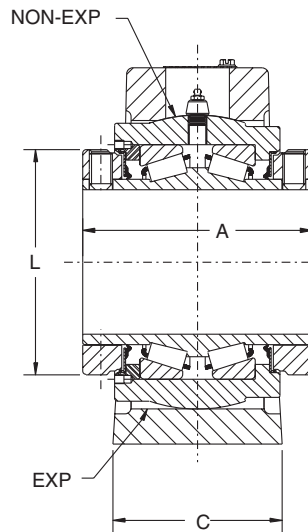
S-2000

UNISPHERE II

DOUBLE-INTERLOCK Pillow Block - Inch 2-BOLT BASE



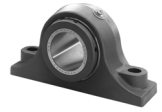
1-3/16" THRU 3" CONSTRUCTION



3-3/16" THRU 3-1/2" CONSTRUCTION

FEATURES/BENEFITS PAGE B6-3	SPECIFICATION PAGE B6-8	NOMENCLATURE PAGE B6-10	SELECTION PAGE B6-11
--------------------------------	----------------------------	----------------------------	-------------------------

SELECTION/DIMENSIONS



DOUBLE-INTERLOCK Pillow Block - Inch 2-BOLT BASE

GRAY IRON NON-EXPANSION*					
SHAFT SIZE INCHES#	SHAFT SIZE SYMBOL	PILLOW BLOCK ASSY	HOUSING ONLY	BEARING INNER UNIT	PIL. BLK. WT., APRX LBS
1-1/4	104	023329	056130	023508	9
1-3/8	106	023330	056132	023509	11
1-7/16	107	023331	056132	023510	11
1-1/2	108	023332	056134	023511	15
1-5/8	110	023333	056134	023512	15
1-11/16	111	023334	056134	023513	15
1-3/4	112	023335	056136	023514	18
1-15/16	115	023337	056136	023516	17
2	200	023338	056136	023517	17
2-3/16	203	023339	056138	023518	25
2-1/4	204	023340	056140	023519	29
2-7/16	207	023341	056140	023520	26
2-1/2	208	023342	056140	023521	26
2-11/16	211	023343	056142	023522	41
2-3/4	212	023344	056142	023523	41
2-15/16	215	023345	056142	023524	40
3	300	023346	056142	023525	40
3-3/16	303	023347	056144	023526	67
3-7/16	307	023349	056144	023528	66
3-1/2	308	023350	056144	023529	66

Description = P2B-DI-207R For 2-7/16" Size

Consult DODGE For Sizes Not Listed.

* Furnished Unless Otherwise Specified

GRAY IRON EXPANSION					
SHAFT SIZE INCHES#	SHAFT SIZE SYMBOL	PILLOW BLOCK ASSY	HOUSING ONLY	BEARING INNER UNIT	PIL. BLK. WT., APRX LBS"
1-1/4	104	023376	056100	023508	9
1-3/8	106	023377	056102	023509	11
1-7/16	107	023378	056102	023510	11
1-1/2	108	023379	056104	023511	15
1-5/8	110	023380	056104	023512	15
1-11/16	111	023381	056104	023513	15
1-3/4	112	023382	056106	023514	18
1-15/16	115	023384	056106	023516	17
2	200	023385	056106	023517	17
2-3/16	203	023386	056108	023518	22
2-1/4	204	023387	056110	023519	29
2-7/16	207	023388	056110	023520	26
2-1/2	208	023389	056110	023521	26
2-11/16	211	023390	056112	023522	42
2-3/4	212	023391	056112	023523	42
2-15/16	215	023392	056112	023524	41
3	300	023393	056112	023525	41
3-3/16	303	023394	056114	023526	69
3-7/16	307	023396	056114	023528	68
3-1/2	308	023397	056114	023529	68

Description = P2B-DI-207RE For 2-7/16" Size

Consult DODGE For Sizes Not Listed.

SHAFT SIZE INCHES	A	B	C	D		F BOLT DIA.	G	H	J	L	M	P	EXP*
				MIN.	MAX.								
1-1/4	2-3/4	7-1/2	1-7/8	6	6-3/8	3/8	43/64	1	4-17/32	2-1/4	2-1/8	5	3/32
1-3/8	3	8	2-3/16	6-1/4	6-5/8	1/2	3/4	1-1/4	5-15/64	2-3/4	2-3/8	5-33/64	3/32
1-7/16													
1-1/2	3-3/8	9	2-3/8	6-7/8	7-5/8	1/2	1	1-3/8	5-3/4	3-3/16	2-5/8	5-13/16	3/32
1-5/8													
1-11/16	3-1/2	10	2-17/32	7-3/8	8-7/16	5/8	1-19/64	1-1/2	6-17/64	3-7/16	2-7/8	6-23/64	9/32
1-3/4													
1-15/16	3-3/4	11	2-21/32	8-1/16	9-1/4	5/8	1-21/64	1-1/2	6-33/34	3-3/4	3	6-31/32	9/32
2													
2-3/16	4	12	2-13/16	9-17/64	10-1/4	5/8	1-17/64	1-3/4	7-1/32	4-1/16	3-1/4	7-3/8	9/32
2-1/4													
2-7/16	4-1/2	13-7/16	2-15/16	9-7/8	11-1/2	3/4	1-11/16	2	7-59/64	4-23/32	3-3/4	8-5/16	9/32
2-1/2													
2-11/16	5	16	3-7/16	12-13/16	13-13/16	7/8	1-1/2	2-1/4	9-27/64	5-1/2	4-1/2	10-3/32	9/32
2-3/4													
2-15/16													
3													
3-3/16													
3-7/16													
3-1/2													

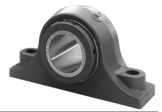
* EXP - Total Expansion Divided Equally On Both Sides Of Bearing (Expansion Bearings Only)

NOTE: All sizes use a 1/8-27 NPT hydraulic grease fitting

Dowel Hole Locations For Precision Positioning - See Page -

FEATURES/BENEFITS PAGE B6-3	SPECIFICATION PAGE B6-8	NOMENCLATURE PAGE B6-10	SELECTION PAGE B6-11
--------------------------------	----------------------------	----------------------------	-------------------------

SELECTION/DIMENSIONS



D-LOCK

Type E Family

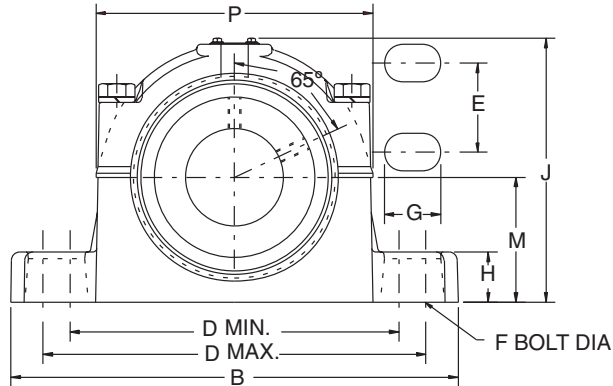
Specialty Tapered

S-2000

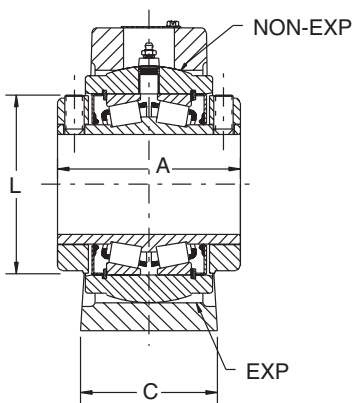
UNISPHERE II

DOUBLE-INTERLOCK Pillow Block - Inch 4-BOLT BASE

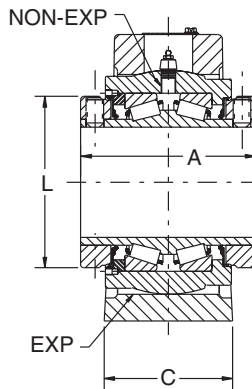
NOTE: All sizes use a 1/8 - 27 NPT hydraulic grease fitting



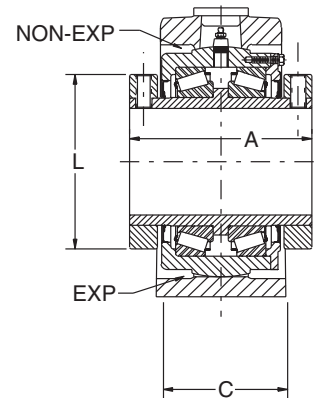
2-7/16" THRU 5"
CONSTRUCTION



2-7/16" THRU 3"
CONSTRUCTION



3-7/16" THRU 5"
CONSTRUCTION



5-7/16" THRU 5-15/16"
CONSTRUCTION

FEATURES/BENEFITS PAGE B6-3	SPECIFICATION PAGE B6-8	NOMENCLATURE PAGE B6-10	SELECTION PAGE B6-11
--------------------------------	----------------------------	----------------------------	-------------------------

SELECTION/DIMENSIONS



DOUBLE-INTERLOCK Pillow Block - Inch 4-BOLT BASE

GRAY IRON NON EXPANSION*					
SHAFT SIZE INCHES#	SHAFT SIZE SYMBOL	PILLOW BLOCK ASSY	HOUSING ONLY	BEARING INNER UNIT	PIL. BLK. WT., APRX LBS
2-7/16	207	023352	060745	023520	28
2-1/2	208	023353	060745	023521	28
2-11/16	211	023354	060747	023522	38
2-15/16	215	023356	060747	023524	38
3	300	023357	060747	023525	38
3-7/16	307	023360	060749	023528	69
3-1/2	308	023361	060749	023529	69
3-15/16	315	023362	060751	023530	109
4	400	023363	060751	023531	109
4-7/16	407	023364	060753	023532	139
4-1/2	408	023365	060753	023533	135
4-15/16	415	023366	060755	023534	183
5	500	023367	060755	023535	181
5-7/16	507	023368	060579	023536	310
5-15/16	515	023369	060579	023537	299

+ Furnished Unless Otherwise Specified
Description = P4B-DI-207R For 2-7/16" Size
Consult DODGE For Sizes Not Listed.

GRAY IRON HOUSING BEARING INNER					
SHAFT SIZE INCHES#	SHAFT SIZE SYMBOL	PILLOW BLOCK ASSY	HOUSING ONLY	BEARING INNER UNIT	PIL. BLK. WT., APRX LBS
2-7/16	207	023399	060746	023520	28
2-1/2	208	023400	060746	023521	28
2-11/16	211	023401	060748	023522	38
2-15/16	215	023403	060748	023524	38
3	300	023404	060748	023525	38
3-7/16	307	023407	060750	023528	69
3-1/2	308	023408	060750	023529	69
3-15/16	315	023409	060752	023530	110
4	400	023410	060752	023531	110
4-7/16	407	023411	060754	023532	139
4-1/2	408	023412	060754	023533	135
4-15/16	415	023413	060756	023534	181
5	500	023414	060756	023535	179
5-7/16	507	023415	060578	023536	310
5-15/16	515	023416	060578	023537	299

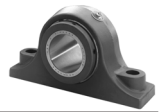
+ Furnished Unless Otherwise Specified
Description = P4B-DI-207RE For 2-7/16" Size
Consult DODGE For Sizes Not Listed.

SHAFT SIZE INCHES	A	B	C	D		E	F BOLT DIA	G	H	J	L	M	P	EXP*
				MIN.	MAX									
2-7/16	4	12	3-3/8	9-17/64	10-1/4	1-3/4	1/2	1-1/16	1-3/4	7-1/32	4-1/16	3-1/4	7-3/8	9/32
2-1/2				9-7/8	11-1/2									
2-11/16	4-1/2	13-7/16	3-1/2	9-7/8	11-1/2	1-7/8	5/8	1-9/16	2	7-59/64	4-23/32	3-3/4	8-5/16	9/32
2-15/16														
3	5	16	4	12-13/16	13-13/16	2	3/4	1-29/64	2-1/4	9-27/64	5-1/2	4-1/2	10-3/32	9/32
3-7/16														
3-15/16	6-3/4	19	4-5/8	14-3/8	16-1/4	2-1/4	3/4	1-13/16	3	11-37/64	6-29/64	5-3/4	12-29/64	11/32
4														
4-7/16	9	23-11/16	6-1/4	19	20-5/8	3	1	1-15/16	3-1/2	14-19/32	9-3/8	7-1/8	15-1/8	1/2
4-1/2														

*EXP - Total Expansion Divided Equally On Both Sides Of Bearing (Expansion Bearings Only) **NOTE:** All sizes use a 1/8-27 NPT hydraulic grease fitting
Dowel Hole Locations For Precision Positioning - See Page -

FEATURES/BENEFITS PAGE B6-3	SPECIFICATION PAGE B6-8	NOMENCLATURE PAGE B6-10	SELECTION PAGE B6-11
--------------------------------	----------------------------	----------------------------	-------------------------

SELECTION/DIMENSIONS



D-LOK

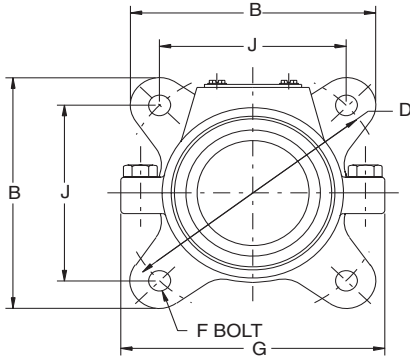
Type E Family

Specialty Tapered

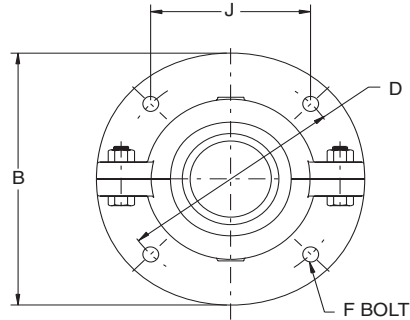
S-2000

UNISPHERE II

DOUBLE-INTERLOCK Flange Bearing - Inch

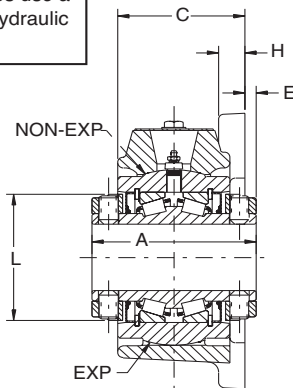


1-3/16" THRU 4" EXTERNAL CONSTRUCTION

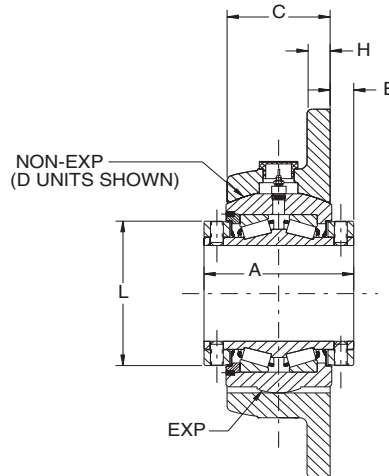


4-7/16" THRU 5" EXTERNAL CONSTRUCTION

NOTE: All sizes use a 1/8 - 27 NPT hydraulic grease fitting



1-3/16" THRU 3" INTERNAL CONSTRUCTION



3-3/16" THRU 5" INTERNAL CONSTRUCTION OF UNIT

* 4-7/16", 4-1/2", 4-15/16" & 5"
NON-EXPANSION HOUSINGS USE THE D UNIT
ALL OTHER HOUSING EXPANSION &
NON-EXPANSION USE THE S1 UNIT

FEATURES/BENEFITS PAGE B6-3	SPECIFICATION PAGE B6-8	NOMENCLATURE PAGE B6-10	SELECTION PAGE B6-11
--------------------------------	----------------------------	----------------------------	-------------------------

SELECTION/DIMENSIONS



DOUBLE-INTERLOCK Flange Bearing - Inch

DUCTILE IRON NON-EXPANSION*			
SHAFT SIZE INCHES #	PART NUMBER	PART NAME	WEIGHT LBS (APPROX)
1-7/16	023425	F4B-DI-107R	9
1-15/16	023431	F4B-DI-115R	15
2	023432	F4B-DI-200R	15
2-3/16	023433	F4B-DI-203R	19
2-7/16	023435	F4B-DI-207R	22
2-1/2	023436+	F4B-DI-208R	22
2-15/16	023439	F4B-DI-215R	32
3	023440+	F4B-DI-300R	31
3-7/16	023443	F4B-DI-307R	53
3-15/16	023445	F4B-DI-315R	82
4-7/16 ◇	023447+	F4B-DI-407R	158
4-1/2 ◇	023448+	F4B-DI-408R	158
4-15/16 ◇	023449	F4B-DI-415R	220

* Furnished Unless Otherwise Specified

Consult DODGE For Sizes Not Listed.

+ Non-stock -- Consult DODGE For Delivery

◇ 4-7/16" - 5" Housings Are Made Of Cast Iron

DUCTILE IRON EXPANSION			
SHAFT SIZE INCHES #	PART NUMBER	PART NAME	WEIGHT LBS (APPROX)
1-7/16	023454	F4B-DI-107RE	9
1-15/16	023460	F4B-DI-115RE	15
2	023461	F4B-DI-200RE	15
2-3/16	023462	F4B-DI-203RE	19
2-7/16	023464	F4B-DI-207RE	22
2-1/2	023465+	F4B-DI-208RE	22
2-15/16	023468	F4B-DI-215RE	32
3	023469+	F4B-DI-300RE	31
3-7/16	023472	F4B-DI-307RE	53
3-15/16	023474+	F4B-DI-315RE	82
4-7/16 ◇	023476+	F4B-DI-407RE	158
4-1/2 ◇	023477+	F4B-DI-408RE	158
4-15/16 ◇	023478	F4B-DI-415RE	220

Consult DODGE For Sizes Not Listed.

+ Non-stock -- Consult DODGE For Delivery

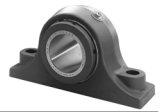
◇ 4-7/16" - 5" Housings Are Made Of Cast Iron

SHAFT SIZE INCHES	A	B	C	D	E	F Bolt Dia.	G	H	J	L
1-7/16	3	5-3/4	2-1/8	6-1/4	5/16	1/2	5-3/4	1/2	4-27/64	2-3/4
1-15/16	3-1/2	6-7/8	2-9/16	7-1/2	3/8	5/8	7-1/4	9/16	5-5/16	3-7/16
2	3-3/4	7-3/16	2-23/32	8	7/16	5/8	7-13/16	9/16	5-21/32	3-3/4
2-7/16	4	7-5/8	2-15/16	8-1/2	7/16	5/8	8-9/16	5/8	6	4-1/16
2-1/2	4	7-5/8	2-15/16	8-1/2	7/16	5/8	8-9/16	5/8	6	4-1/16
2-15/16	4-1/2	8-7/8	3-11/32	9-3/4	1/2	3/4	9-1/2	11/16	6-57/64	4-23/32
3	4-1/2	8-7/8	3-11/32	9-3/4	1/2	3/4	9-1/2	11/16	6-57/64	4-23/32
3-7/16	5	10-1/4	3-23/32	11-1/2	1/2	7/8	11-3/8	3/4	8-1/8	5-1/2
3-15/16	6-1/4	11-7/16	4-5/8	13	3/4	1	12-7/8	13/16	9-3/16	6
4-7/16	6-3/4	17-3/4	4-5/8	15	1-1/16	1	-----	1	10-39/64	6-29/64
4-1/2	6-3/4	17-3/4	4-5/8	15	1-1/16	1	-----	1	10-39/64	6-29/64
4-15/16	7-1/4	19	5	16	1-1/8	1-1/8	-----	1-1/8	11-5/16	7-29/64

NOTE: All sizes use a 1/8-27 NPT hydraulic grease fitting

FEATURES/BENEFITS PAGE B6-3	SPECIFICATION PAGE B6-8	NOMENCLATURE PAGE B6-10	SELECTION PAGE B6-11
--------------------------------	----------------------------	----------------------------	-------------------------

SELECTION/DIMENSIONS



D-LOCK

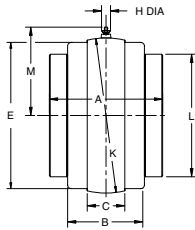
Type E Family

Specialty Tapered

S-2000

UNISPHERE II

DOUBLE-INTERLOCK Units - Inch



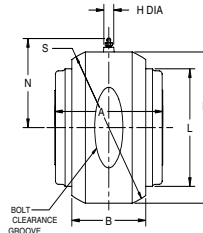
S-1 UNIT

Pillow Block

S-1 units are used in expansion and non-expansion pillow block housings

Flange

S-1 unit is used in expansion flange housings and non-expansion flange housings for 1-3/16 - 4"

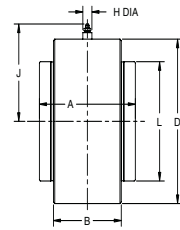


D UNIT

Flange

D units are used in non-expansion flange housings

- 4-7/16 - 5" bore size
- Formerly used in DOUBLE-INTERLOCK non-expansion flange bearing and pillow blocks thru 5 bore size prior to '78



B-1 UNIT

B-1 units can only be used in a customer manufactured housing and are often mounted in machines where bored holes can be provided. B-1 units can be used either as a non-expansion or expansion bearing by providing a suitable means of locating the unit axially. B-1 units will handle slight misalignment requirements. Shaft must be supported by another unit or bearing. For mounting in rotating wheels the Type C B-1 units is preferred or consult the factory.

SHAFT SIZE INCHES	A	B	C	σ D	E		H	J	K	L	M	N	P	S
					MACH. SIDE	CAST SIDE								
1-3/16 1-1/4	2-3/4	1-7/8	11/32	3	2.813	2-9/32	**	2.42	3.125•	2-1/4	2.03	---	---	---
1-3/8 1-7/6	3	2-1/16	1-5/32	3-7/16	3.250	3-5/16	11/16	2.54	3.625•	2-3/4	2.64	2-7/8	3-5/8	3.844•
1-1/2 1-5/8 1-11/16	3-3/8	2-5/16	1-3/16	3-15/16	3.750	3-13/16	11/16	2.79	4.125•	3-3/16	2.89	3-1/8	4-3/32	4.344•
1-3/4 1-7/8 1-15/16 2	3-1/2	2-7/16	1-1/2	4-1/4	4.125	4-3/16	11/16	2.95	4.562•	3-7/16	3.10	3-1/4	4-7/16	4.656•
2-3/16	3-3/4	2-9/16	1-9/16	45/8	4.500	4-5/8	11/16	3.13	5.000•	3-3/4	3.32	3-7/16	4-23/32	5.000•
2-1/4 2-7/16 2-1/2	4	2-3/4	1-7/16	5	4.812	4-7/8	11/16	3.32	5.186•	4-1/16	3.41	3-37/64	5-5/32	5.437•
2-11/16 2-3/4 2-15/16 3	4-1/2	3	1-7/8	5-7/8	5.563	5-5/8	11/16	3.76	6.061•	4-23/32	3.85	4	5-13/16	6.094•
3-3/16 3-1/4 3-7/16 3-1/2	5	3-1/2	2	7-1/8	6.813	6-7/8	11/16	4.38	7.373#	5-1/2	4.51	4-11/16	7-7/32	7.500^
3-15/16 4	6-1/4	4-1/2	2-3/8	7-7/8	7.438	7-1/2	*	5.48	7.997#	6	5.16	5-1/8	8-1/8	8.375^
4-7/16 4-1/2	6-3/4	4-5/8	2-3/8	8-3/4	8.313	8-3/8	*	5.91	8.872#	6-29/64	5.60	5-1/2	8-7/8	9.125^
4-15/16 5	7-1/4	5-1/8	2-7/8	10-1/8	9.563	9-5/8	*	6.6	10.184#	7-29/64	6.26	6-3/16	10-1/4	10.500^
5-7/16 5-15/16 6	9	6-1/16	2-7/8	---	11.188	11-3/16	15/16	---	11.874	9-3/8	7.10	---	---	---
6-7/16 6-1/2 6-15/16 7	10-1/2	7-1/8	3	---	13.25	13-1/4	15/16	---	14.248	11-3/8	8.29	---	---	---

* 11/16" DIA ON D UNITS; 15/16" ON S-1 UNITS AND 3/4 HEX ON B-1 UNITS

** 11/16" DIA ON B-1 UNITS; 7/16" DIA ON S-1 UNITS

• +.000 TO .001"

±.0005"

σ +.000 TO -.002"

^ +.000 TO -.003"

FEATURES/BENEFITS PAGE B6-3	SPECIFICATION PAGE B6-8	NOMENCLATURE PAGE B6-10	SELECTION PAGE B6-11
--------------------------------	----------------------------	----------------------------	-------------------------

SELECTION/DIMENSIONS



DOUBLE-INTERLOCK Units - Inch

"S-1" UNITS -- GRAY IRON 1-3/16" thru 3"			
SHAFT SIZE INCHES #	PART NUMBER	PART NAME	WEIGHT LBS (APPROX)
1-3/16	023507	S1U-DI-103R	3
1-1/4	023508+	S1U-DI-104R	4
1-3/8	023509+	S1U-DI-106R	5
1-7/16	023510	S1U-DI-107R	5
1-1/2	023511+	S1U-DI-108R	7
1-5/8	023512	S1U-DI-110R	7
1-11/16	023513	S1U-DI-111R	7
1-3/4	023514	S1U-DI-112R	8
1-7/8	023515+	S1U-DI-114R	8
1-15/16	023516	S1U-DI-115R	8
2	023517	S1U-DI-200R	8
2-3/16	023518	S1U-DI-203R	10
2-1/4	023519+	S1U-DI-204R	12
2-7/16	023520	S1U-DI-207R	11
2-1/2	023521	S1U-DI-208R	11
2-11/16	023522	S1U-DI-211R	18
2-3/4	023523+	S1U-DI-212R	17
2-15/16	023524	S1U-DI-215R	17
3	023525	S1U-DI-300R	17

Consult DODGE For Sizes Not Listed.

+ Non-stock -- Consult DODGE For Delivery

"D" UNITS -- GRAY IRON			
SHAFT SIZE INCHES #	PART NUMBER	PART NAME	WEIGHT LBS (APPROX)
1-3/16	-----	DU-DI-103R	-----
1-1/4	-----	DU-DI-104R	-----
1-3/8	023480+	DU-DI-106R	5
1-7/16	023481	DU-DI-107R	5
1-1/2	023482	DU-DI-108R	8
1-5/8	023483+	DU-DI-110R	7
1-11/16	023484	DU-DI-111R	7
1-3/4	023485	DU-DI-112R	8
1-7/8	023486+	DU-DI-114R	8
1-15/16	023487	DU-DI-115R	8
2	023488	DU-DI-200R	8
2-3/16	023489	DU-DI-203R	9
2-1/4	023490+	DU-DI-204R	12
2-7/16	023491	DU-DI-207R	12
2-1/2	023492	DU-DI-208R	12
2-11/16	023493	DU-DI-211R	18
2-3/4	023494	DU-DI-212R	17
2-15/16	023495	DU-DI-215R	16
3	023496	DU-DI-300R	16
3-3/16	023497	DU-DI-303R	32
3-1/4	023498+	DU-DI-304R	31
3-7/16	023499	DU-DI-307R	30
3-1/2	023500	DU-DI-308R	29
3-15/16	023501	DU-DI-315R	46
4	023502	DU-DI-400R	43
4-7/16	023503	DU-DI-407R	57
4 1/2	023504+	DU-DI-408R	64
4-15/16	023505	DU-DI-415R	85
5	023506+	DU-DI-500R	85

Consult DODGE For Sizes Not Listed.

+ Non-stock -- Consult DODGE For Delivery

"S-1" UNITS -- GRAY IRON 3-3/16" thru 7"			
SHAFT SIZE INCHES #	PART NUMBER	PART NAME	WEIGHT LBS (APPROX)
3-3/16	023526	S1U-DI-303R	34
3-1/4	023527+	S1U-DI-304R	31
3-7/16	023528	S1U-DI-307R	31
3-1/2	023529+	S1U-DI-308R	31
3-15/16	023530	S1U-DI-315R	43
4	023531	S1U-DI-400R	43
4-7/16	023532	S1U-DI-407R	57
4-1/2	023533+	S1U-DI-408R	64
4-15/16	023534	S1U-DI-415R	82
5	023535+	S1U-DI-500R	82
5-7/16	023536	S1U-DI-507R	159
5-15/16	023537	S1U-DI-515R	135
6	023538	S1U-DI-600R	128
6-7/16	023539	S1U-DI-607R	187
6-1/2	023540	S1U-DI-608R	182
6-15/16	023541	S1U-DI-615R	180
7	023542	S1U-DI-700R	178

Consult DODGE For Sizes Not Listed.

+ Non-stock -- Consult DODGE For Delivery

"B-1" UNITS -- GRAY IRON			
SHAFT SIZE INCHES #	PART NUMBER	PART NAME	WEIGHT LBS (APPROX)
1-3/16	023543	BIU-DI-103R	3
1-3/8	023545	BIU-DI-106R	5
1-7/16	023546	BIU-DI-107R	5
1-1/2	023547	BIU-DI-108R	6
1-5/8	023548+	BIU-DI-110R	6
1-3/4	023550	BIU-DI-112R	8
1-15/16	023552	BIU-DI-115R	8
2	023553	BIU-DI-200R	7
2-3/16	023554	BIU-DI-203R	9
2-7/16	023556	BIU-DI-207R	12
2-1/2	023557	BIU-DI-208R	11
2-11/16	023558+	BIU-DI-211R	17
2-3/4	023559+	BIU-DI-212R	17
2-15/16	023560	BIU-DI-215R	17
3	023561	BIU-DI-300R	17
3-7/16	023564	BIU-DI-307R	30
3-1/2	023565	BIU-DI-308R	30
3-15/16	023566	BIU-DI-315R	45
4	023567	BIU-DI-400R	44
4-7/16	023568	BIU-DI-407R	58
4 1/2	023569	BIU-DI-408R	64
4-15/16	023570	BIU-DI-415R	87
5	023571	BIU-DI-500R	86

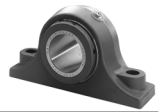
Consult DODGE For Sizes Not Listed.

+ Non-stock -- Consult DODGE For Delivery

NOTE: All sizes use a 1/8-27 NPT hydraulic grease fitting

FEATURES/BENEFITS PAGE B6-3	SPECIFICATION PAGE B6-8	NOMENCLATURE PAGE B6-10	SELECTION PAGE B6-11
--------------------------------	----------------------------	----------------------------	-------------------------

SELECTION/DIMENSIONS



D-LOK

Type E Family

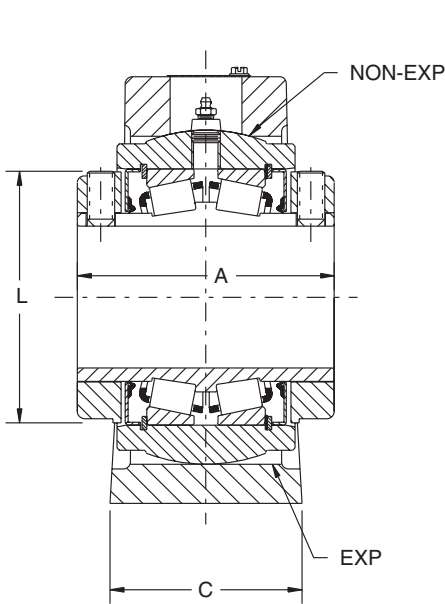
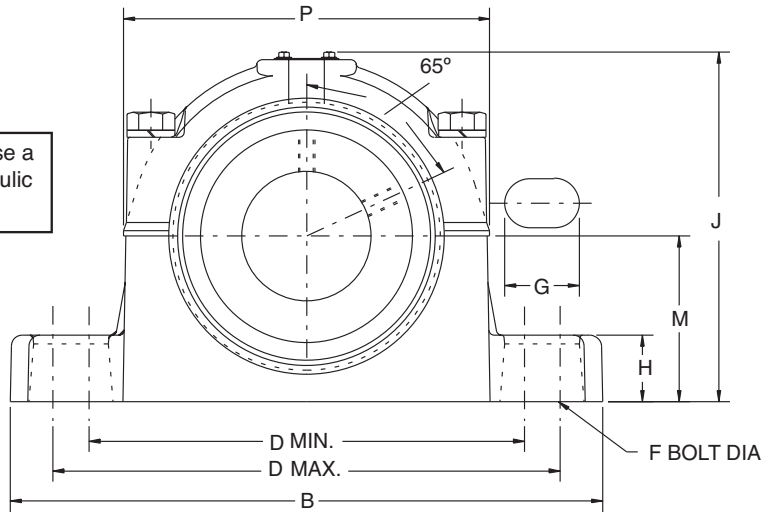
Specialty Tapered

S-2000

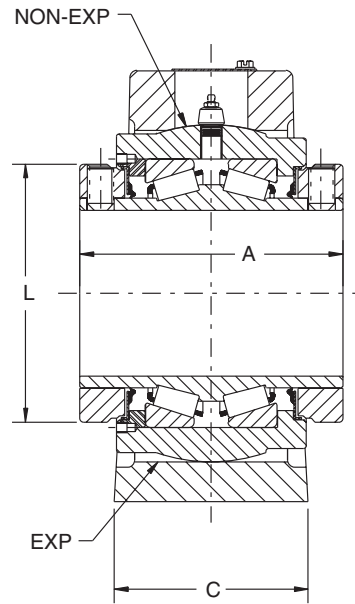
UNISPHERE II

TAF Pillow Block - Inch 2-BOLT BASE

NOTE: All sizes use a 1/8 - 27 NPT hydraulic grease fitting



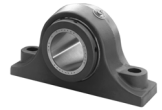
1-7/16" THRU 3" CONSTRUCTION



3-7/16" THRU 3-1/2" CONSTRUCTION

FEATURES/BENEFITS PAGE B6-3	SPECIFICATION PAGE B6-8	NOMENCLATURE PAGE B6-10	SELECTION PAGE B6-11
--------------------------------	----------------------------	----------------------------	-------------------------

SELECTION/DIMENSIONS



TAF Pillow Block - Inch 2-BOLT BASE

GRAY IRON NON-EXPANSION +						
SHAFT SIZE INCHES #	SHAFT SIZE SYMBOL	SAF HOUSING NUMBER	PILLOW BLOCK ASSY	HOUSING ONLY	BEARING INNER UNIT	PIL. BLK.WT. APRX LBS
1-7/16	107	509	037580	037540	037632	12
1-11/16	111	510	037581	037541	037633	15
1-15/16	115	511	037582	037542	037634	17
2-3/16	203	513	037583	037543	037635	25
2-7/16	207	515	037584	037544	037636	30
2-1/2	208		037585	037544	037637	30
2-11/16	211	516	037586	037545	037638	38
2-3/4	212		037587	037545	037639	38
2-15/16	215	517	037588	037546	037640	45
3	300		037589	037546	037641	44
3-7/16	307	520	037590	037547	037642	71
3-1/2	308		037591	037547	037643	70

+ Furnished Unless Otherwise Specified.

Description = P2B-TAF-207RE FOR 2-7/16" Size

Consult DODGE For Sizes Not Shown

GRAY IRON EXPANSION						
SHAFT SIZE INCHES #	SHAFT SIZE SYMBOL	SAF HOUSING NUMBER	PILLOW BLOCK ASSY	HOUSING ONLY	BEARING INNER UNIT	PIL. BLK.WT. APRX LBS
1-7/16	107	509	037592	037555	037632	12
1-11/16	111	510	037593	037556	037633	15
1-15/16	115	511	037594	037557	037634	17
2-3/16	203	513	037595	037558	037635	25
2-7/16	207	515	037596	037559	037636	30
2-1/2	208		037597	037559	037637	30
2-11/16	211	516	037598	037560	037638	38
2-3/4	212		037599	037560	037639	38
2-15/16	215	517	037600	037561	037640	45
3	300		037601	037561	037641	44
3-7/16	307	520	037602	037562	037642	71
3-1/2	308		037603	037562	037643	70

Description = P2B-TAF-207RE FOR 2-7/16" Size

Consult DODGE For Sizes Not Shown

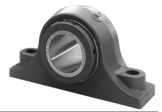
SHAFT SIZE INCHES	SAF SERIES	A	B	C	D		F BOLT DIA	G	H	J	L	M	P	EXP*
					MIN.	MAX.								
1-7/16	509	3	8-1/4	2-3/16	6-1/4	7	1/2	15/16	7/8	5-7/64	2-3/4	2-1/4	5-33/64	3/32
1-11/16	510	3-3/8	8-1/4	2-3/8	6-1/2	7	1/2	7/8	1-1/32	5-5/8	3-3/16	2-1/2	5-13/16	3/32
1-15/16	511	3-1/2	9-5/8	2-3/4	7-3/8	8-1/4	5/8	1-13/64	1-1/32	6-9/64	3-7/16	2-3/4	6-23/64	9/32
2-3/16	513	3-3/4	11	3-1/4	8-21/32	9-1/2	5/8	1-7/16	1-1/32	6-33/64	3-3/4	3	6-61/64	9/32
2-7/16	515	4	11-1/8	3-1/8	8-5/8	9-5/8	5/8	1-17/64	1-1/4	7-1/32	4-1/16	3-1/4	7-3/8	9/32
2-1/2														
2-11/16	516	4-1/2	12-19/32	3-1/2	9-7/8	11	3/4	1-7/16	1	7-43/64	4-23/32	3-1/2	8-5/16	9/32
2-3/4														
2-15/16	517	4-1/2	12-19/32	3-1/2	9-7/8	11	3/4	1-7/16	1-1/4	7-59/64	4-23/32	3-3/4	8-5/16	9/32
3														
3-7/16	520	5	15-3/8	4-11/32	11-13/16	13-1/8	7/8	1-21/32	1-21/32	9-27/64	5-1/2	4-1/2	10-3/32	9/32
3-1/2														

*EXP Total Expansion Divided Equally On Both Sides Of Bearing (Expansion Bearing Only).

NOTE: All sizes use a 1/8-27 NPT hydraulic grease fitting

FEATURES/BENEFITS PAGE B6-3	SPECIFICATION PAGE B6-8	NOMENCLATURE PAGE B6-10	SELECTION PAGE B6-11
--------------------------------	----------------------------	----------------------------	-------------------------

SELECTION/DIMENSIONS



D-LOK

Type E Family

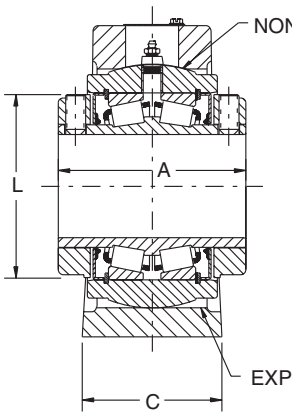
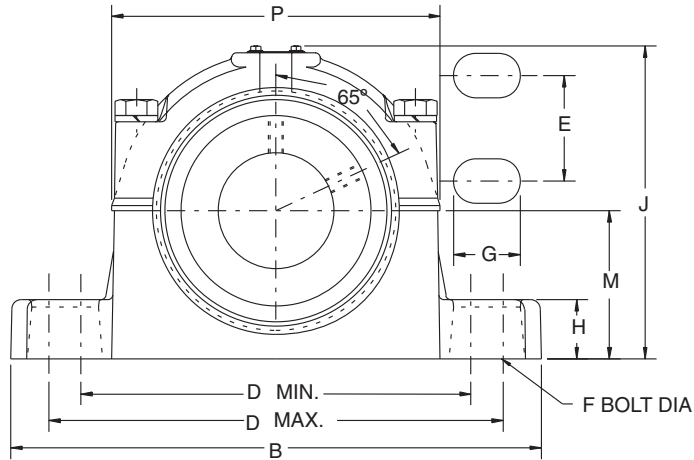
Specialty Tapered

S-2000

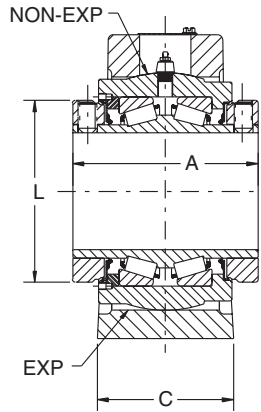
UNISPHERE II

TAF Pillow Block - Inch 4-BOLT BASE

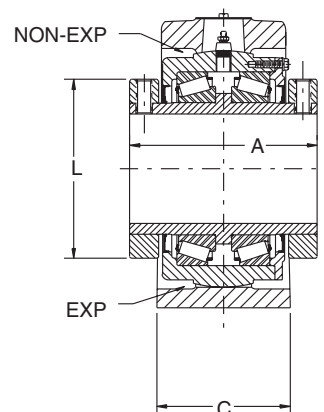
NOTE: All sizes use a 1/8 - 27 NPT hydraulic grease fitting



2-7/16" THRU 3"
CONSTRUCTION



3-7/16" THRU 5"
CONSTRUCTION



5-7/16" THRU 7"
CONSTRUCTION

FEATURES/BENEFITS PAGE B6-3	SPECIFICATION PAGE B6-8	NOMENCLATURE PAGE B6-10	SELECTION PAGE B6-11
--------------------------------	----------------------------	----------------------------	-------------------------

SELECTION/DIMENSIONS



TAF Pillow Block - Inch 4-BOLT BASE

GRAY IRON NON-EXPANSION +						
SHAFT SIZE INCHES #	SHAFT SIZE SYMBOL	SAF HOUSING NUMBER	PILLOW BLOCK ASSY	HOUSING ONLY	BEARING INNER UNIT	PIL. BLK. WT. APRX LBS
2-7/16	207	515	037604	037548	037636	30
2-1/2	208	515	037605	037548	037637	30
2-11/16	211	516	037606	037549	037638	38
2-3/4	212	516	037607	037549	037639	38
2-15/16	215	517	037608	037550	037640	45
3	300	517	037609	037550	037641	44
3-7/16	307	520	037610	037551	037642	71
3-1/2	308	520	037611	037551	037643	70
3-15/16	315	522	037612	037552	037644	110
4	400	522	037613	037552	037645	110
4-7/16	407	526	037614	037553	037646	140
4-1/2	408	526	037615	037553	037647	140
4-15/16	415	528	037616	037554	037648	180
5	500	528	037617	037554	037649	180
5-7/16	507	532	023584	042628	023610	300
5-15/16	515	534	023585	042630	023611	300
6	600	534	023586	042630	023612	300
6-7/16	607	536	023587	042632	023613	510
6-1/2	608	536	023588	042632	023614	510
6-15/16	615	538	023589	042634	023615	52
7	700	538	023590	042634	023616	0520

Description = P4B-TAF-207R FOR 2-7/16" Size Pillow Block
+ Furnished Unless Otherwise Specified
Consult DODGE For Sizes Not Shown

GRAY IRON EXPANSION						
SHAFT SIZE INCHES #	SHAFT SIZE SYMBOL	SAF HOUSING NUMBER	PILLOW BLOCK ASSY	HOUSING ONLY	BEARING INNER UNIT	PIL. BLK. WT. APRX LBS
2-7/16	207	515	037618	037563	037636	30
2-1/2	208	515	037619	037563	037637	30
2-11/16	211	516	037620	037564	037638	38
2-3/4	212	516	037621	037564	037639	38
2-15/16	215	517	037622	037565	037640	45
3	300	517	037623	037565	037641	44
3-7/16	307	520	037624	037566	037642	71
3-1/2	308	520	037625	037566	037643	70
3-15/16	315	522	037626	037567	037644	110
4	400	522	037627	037567	037645	110
4-7/16	407	526	037628	037568	037646	140
4-1/2	408	526	037629	037568	037647	140
4-15/16	415	528	037630	037569	037648	180
5	500	528	037631	037569	037649	180
5-7/16	507	532	023603*	042627*	023610	300
5-15/16	515	534	023604*	042629*	023611	300
6	600	534	023605*	042629*	023612	300
6-7/16	607	536	023606*	042631*	023613	510
6-1/2	608	536	023607*	042631*	023614	510
6-15/16	615	538	023608*	042633*	023615	520
7	700	538	023609*	042633*	023616	520

Description = P4B-TAF-207R FOR 2-7/16" Size Pillow Block
+ Furnished Unless Otherwise Specified
Consult DODGE For Sizes Not Shown

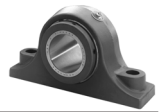
SHAFT SIZE	SAF SERIES	A	B	C	D		E	F BOLT DIA	G	H	J	L	M	P	EXP*
					MIN.	MAX.									
2-7/16 2-1/2	515	4	11-1/8	3-1/8	8-5/8	9-5/8	1-7/8	1/2	1-1/8	1-1/4	7-1/32	4-1/16	3-1/4	7-3/8	9/32
2-11/16 2-3/4	516	4-1/2	12-19/32	3-1/2	9-7/8	11	2-1/8	5/8	1-21/64	1	7-43/64	4-23/32	3-1/2	8-5/16	9/32
2-15/16 3	517	4-1/2	12-19/32	3-1/2	9-7/8	11	2-1/8	5/8	1-21/64	1-1/4	7-59/64	4-23/32	3-3/4	8-5/16	9/32
3-7/16 3-1/2	520	5	15-3/8	4-11/32	11-5/8	13-1/8	2-3/8	3/4	1-5/8	1-21/32	9-27/64	5-1/2	4-1/2	10-3/32	9/32
3-15/16 4	522	6-1/4	16-1/2	4-3/4	12-19/32	14-1/2	2-3/4	3/4	1-53/64	1-25/32	10-23/64	6	4-15/16	10-45/64	11/32
4-7/16 4-1/2	526	6-3/4	18-3/8	5-1/8	14-1/2	16	3-1/4	7/8	1-3/4	2-1/16	11-53/64	6-29/64	6	12-29/64	11/32
4-15/16 5	528	7-1/4	19-45/64	5-7/8	15-5/8	17-3/8	3-3/8	1	2	2-1/16	12-37/64	7-29/64	6	13-23/64	11/32
5-7/16 5-15/16 6	534	9	21-21/32	6-1/4	17-5/8	19-1/4	3-3/4	1	1-59/64	2-11/32	14	9-3/8	6-11/16	15-1/8	13/32
6-7/16 6-1/2	536	10-1/2	26-3/4	7-1/8	21	23-5/8	4-5/8	1	2-7/16	2-7/8	14-3/8	9-3/8	7-1/16	15-1/8	13/32
6-15/16 7	538	10-1/2	28	7-1/2	21-5/8	24-3/8	4-1/2	1-1/4	2-3/4	3-1/8	16-9/16	11-3/8	7-7/8	18-5/16	13/32

*EXP - Total Expansion Divided Equally On Both Sides Of Bearing (Expansion Bearings Only)

NOTE: All sizes use a 1/8-27 NPT hydraulic grease fitting

FEATURES/BENEFITS PAGE B6-3	SPECIFICATION PAGE B6-8	NOMENCLATURE PAGE B6-10	SELECTION PAGE B6-11
--------------------------------	----------------------------	----------------------------	-------------------------

SELECTION/DIMENSIONS



D-LOK

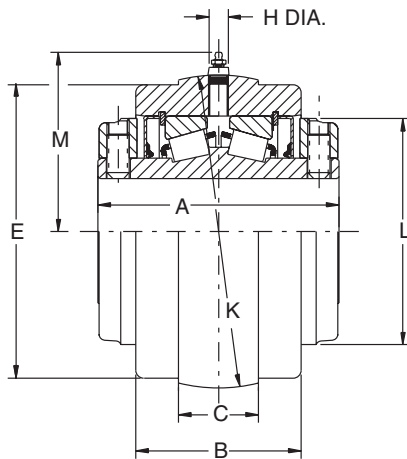
Type E Family

Specialty Tapered

S-2000

UNISPHERE II

TAF Units - Inch

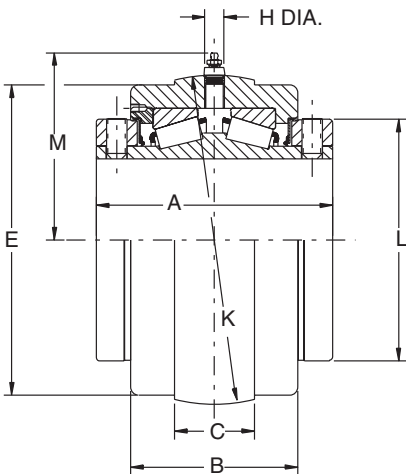


NOTE: All sizes use a 1/8 - 27 NPT hydraulic grease fitting

TAF S1 Unit Is Used In All Expansion And Non-Expansion TAF Housings

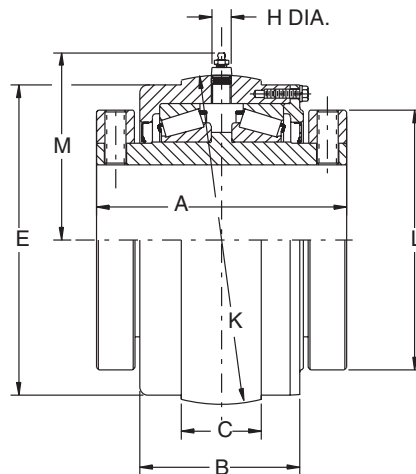
S-1 UNIT

1-7/16" THRU 3" CONSTRUCTION



S-1 UNIT

3-3/16" THRU 5" CONSTRUCTION



S-1 UNIT

5-7/16" THRU 7" CONSTRUCTION

<p>FEATURES/BENEFITS PAGE B6-3</p>	<p>SPECIFICATION PAGE B6-8</p>	<p>NOMENCLATURE PAGE B6-10</p>	<p>SELECTION PAGE B6-11</p>
--	------------------------------------	------------------------------------	---------------------------------

SELECTION/DIMENSIONS



TAF Units - Inch

"S-1" UNITS - GRAY IRON			
SHAFT SIZE # INCHES	PART NUMBER	PART NAME	WEIGHT LBS (APPROX)
1-7/16	037632	S1U509-TAF-107	5
1-11/16	037633	S1U510-TAF-111	7
1-15/16	037634	S1U511-TAF-115	8
2-3/16	037635	S1U513-TAF-203	9
2-7/16	037636	S1U515-TAF-207	11
2- 1/2	037637	S1U515-TAF-208	11
2-11/16	037638	S1U517-TAF-211	18
2-3/4	037639+	S1U517-TAF-212	17
2-15/16	037640	S1U517-TAF-215	17
3	037641	S1U517-TAF-300	17
3-7/16	037642	S1U520-TAF-307	31
3-1/2	037643+	S1U520-TAF-307	31
3-15/16	037644	S1U522-TAF-315	43
4	037645	S1U522-TAF-400	43
4-7/16	037646	S1U526-TAF-407	57
4-1/2	037647+	S1U526-TAF-408	68
4-15/16	037648	S1U528-TAF-415	82
5	037649+	S1U528-TAF-500	82
5-7/16	023610	S1U-TAF-507R	155
5-15/16	023611	S1U-TAF-515R	143
6	023612	S1U-TAF-600R	138
6-7/16	023613	S1U-TAF-607R	187
6-1/2	023614	S1U-TAF-608R	182
6-15/16	023615	S1U-TAF-615R	180
7	023616	S1U-TAF-700R	178

NOTE: TAF inserts below 5-7/16" are not interchangeable with TAF-XT housings. For TAF-XT housings, with shafts of 5" or less, order Double Interlock S-1 units on Page B6-50

SHAFT SIZE INCHES	A	B	C	E		H	K	L	M
				MACH. SIDE	CAST SIDE				
1-7/16	3	2-1/16	1-5/32	3.250	3.31	3/4	3.595•	2-3/4	2-1/2
1-11/16	3-3/8	2-5/16	1-3/16	3.750	3.81	3/4	4.095•	3-3/16	2-7/8
1-15/16	3-1/2	2-7/16	1-1/2	4.125	4.18	3/4	4.502•	3-7/16	2-3/4
2-3/16	3-3/4	2-9/16	1-9/16	4.500	4.56	3/4	4.940•	3-3/4	2-61/64
2-7/16	4	2-3/4	1-7/16	4.812	4.87	3/4	5.156•	4-1/16	3-3/8
2- 1/2									
2-15/16	4-1/2	3	1-7/8	5.563	5.63	3/4	6.001•	4-23/32	3-7/8
3									
3-7/16	5	3-1/2	2-3/16	6.813	6.88	3/4	7.313*	5-1/2	4-1/2
3-1/2									
3-15/16	6-1/4	4-1/2	2-19/32	7.438	7.40	15/16	7.937*	6	5-1/8
4									
4-7/16	6-3/4	4-5/8	2-9/16	8.313	8.32	15/16	8.812*	6-29/64	5-1/2
4-1/2									
4-15/16	7-1/4	5-1/8	3-1/8	9.563	9.54	15/16	10.124*	7-29/64	6-3/16
5									
5-7/16	9	5-7/8	2-9/16	11.190	11.19	15/16	11.563^	9-3/8	6-29/32
5-15/16									
6									
6-7/16	10-1/2	7-1/8	3	13.250	13.25	15/16	13.748^	11-3/8	8
6-1/2									
6-15/16									
7									

• +.000, -.001"

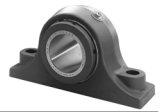
Consult DODGE For Sizes Not Listed

^ +.000, -.003" * +.0005

+ Non-stock -- Consult DODGE For Delivery

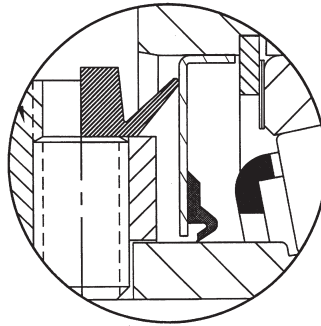
FEATURES/BENEFITS PAGE B6-3	SPECIFICATION PAGE B6-8	NOMENCLATURE PAGE B6-10	SELECTION PAGE B6-11
--------------------------------	----------------------------	----------------------------	-------------------------

SELECTION/DIMENSIONS

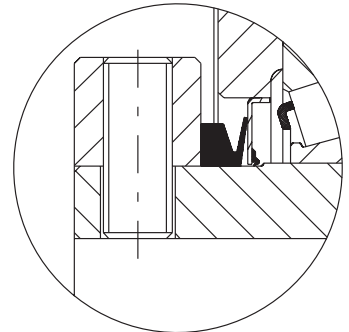


Type E / Type K / DOUBLE-INTERLOCK /TAF E-TECT SEAL KITS

SHAFT SIZE INCHES	KIT PART NUMBER
1-3/16 TO 1-1/4	037650*
1-3/8 TO 1-7/16	037651*
1-1/2 TO 1-11/16	037652*
1-3/4 TO 2	037653*
2-3/16	037654*
2-1/4 TO 2-1/2	037655*
2-11/16 TO 3	037656*
3-3/16 TO 3-1/2	037657*
3-15/16 TO 4	037658*
4-7/16 TO 4-1/2	037659*
4-15/16 TO 5	037660*
5-7/16 TO 6	037673**
6-7/16 TO 7	037674**



1-3/16 THRU 5"

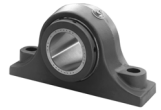


5-7/16 THRU 7"

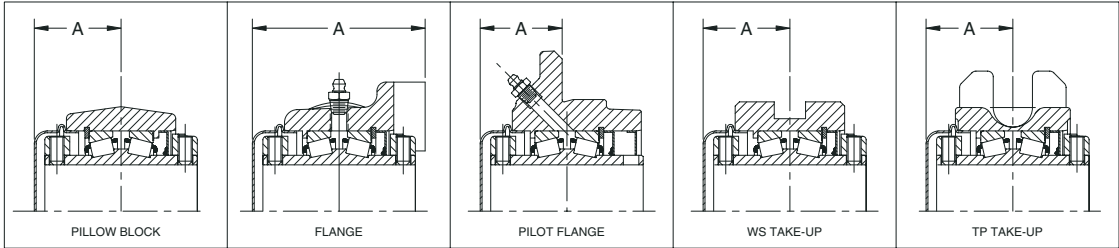
- * Kit includes one collar, set screws and seal
- ** Kit for 5-7/16 - 7" consists of a modified v-ring seal. This seal can only be used with bearings produced after September 1995

FEATURES/BENEFITS PAGE B6-3	SPECIFICATION PAGE B6-8	NOMENCLATURE PAGE B6-10	SELECTION PAGE B6-11
--------------------------------	----------------------------	----------------------------	-------------------------

SELECTION/DIMENSIONS



Type E TYPE E END CLOSURE KITS - INCH



** Seal must be removed before installing the end cover

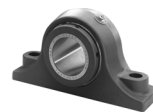
SHAFT SIZE Δ Inches	KIT* PART NO.	"A" DIMENSION (INCH)				
		PILLLOW BLOCK	FLANGE	PILOT FLANGE	WS TAKE-UP	TP TAKE-UP
1-3/16 TO 1-1/4	023795	1-9/16	2-31/32	1-15/32	----	----
1-3/8 TO 1-7/16	023796	1-11/32	3-7/32	1-21/32	1-21/32	----
1-1/2 TO 1-11/16	023797	1-57/64	3-43/64	1-47/64	1-55/64	----
1-3/4 TO 2	023798	1-61/64	3-51/64	1-47/64	1-59/64	1-63/64
2-3/16	023799	2-3/32	4-1/16	1-7/8	2-1/16	2-1/16
2-1/4 TO 2-1/2	023800	2-1/4	4-3/8	2	2-3/16	2-5/16
2-11/16 TO 3	023801	2-7/16	4-7/8	2-3/16	2-7/16	2-7/16

Δ - Consult DODGE For Sizes Not Listed.

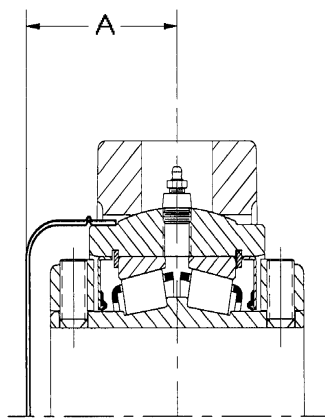
* - Kit Includes End Closure And Special Collar.

FEATURES/BENEFITS PAGE B6-3	SPECIFICATION PAGE B6-8	NOMENCLATURE PAGE B6-10	SELECTION PAGE B6-11
--------------------------------	----------------------------	----------------------------	-------------------------

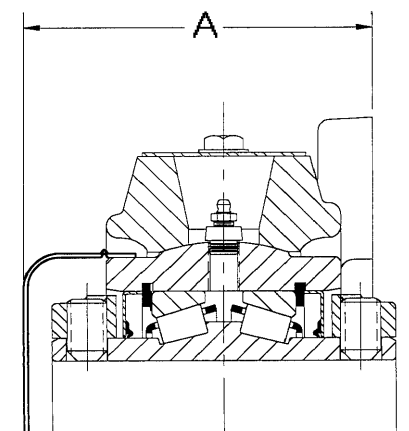
SELECTION/DIMENSIONS



Type K, DOUBLE-INTERLOCK and TAF End Closures



DOUBLE INTERLOCK SHOWN
K, D-I & TAF



DOUBLE INTERLOCK SHOWN
K & D-I

SHAFT SIZE INCHES	PART NUMBER	"A" DIMENSION	
		PILLOW BLOCK	FLANGE BEARING
1-3/8 TO 1-7/16	037681	1-21/32	2-27/32
1-1/2 TO 1-11/16	037682	1-55/64	3-11/64
1-3/4 TO 2	037683	1-59/64	3-19/64
2-3/16	037684	2-1/16	3-1/2
2-1/4 TO 2-1/2	037685	2-3/16	3-3/4
2-11/16 TO 3	037686	2-7/16	4-3/16
3-3/16 TO 3-1/2	037687	2-11/16	4-15/16
3-5/16 TO 4	037688	3-5/16	5-13/16
4-7/16 TO 4-1/2	037689	3-9/16	5-7/8
4-15/16 TO 5	037690	3-13/16	6-5/16

END CLOSURE MOUNTS ON MACHINED OD SIDE OF S-1 UNIT

D-LOK

Type E Family

Specialty Tapered

S-2000

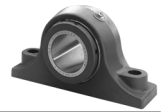
UNISPHERE II

FEATURES/BENEFITS
PAGE B6-3

SPECIFICATION
PAGE B6-8

NOMENCLATURE
PAGE B6-10

SELECTION
PAGE B6-11



TAF - Smart Stock Selections HOW TO ORDER

Step 1: The Housing Choices Standard Or Drilled

When speed only will be monitored, select the standard housing.

When vibration, and /or temperature will be monitored, select the drilled housing

All housing part numbers shown are 4-bolt base, non-expansion



Shaft Size	Series	Standard Housing Part Numbers If you are monitoring speed only Part #	Drilled Housing Part Number For temperature and/or vibration Part #
207	515	037548	053067
215	517	037550	053628
307	520	037551	067350
315	522	037552	054960
407	526	037553	067352
415	528	037554	067353
507	532	042628	067354
515	534	042630	067357
615	538	042634	067234

Step 2: Pick An S1 Unit

Smart S-1 units feature Embedded thermocouple drilled and tapped holes for prox covers

Special locking collar with prox targets



Shaft Size	S1 Unit
207	055805
215	055806
307	055807
315	049235
407	055915
415	055840
507	067355
515	067356
615	067323

Step 3: The Sensor Choices

For speed monitoring, use AC prox and prox cover or DC prox and prox cover. (Use DC with EZLINK only)

For temperature monitoring, use thermocouple transmitter or for speed, temperature and vibration monitoring, use EZLINK

Prox Covers		
Shaft	Housing	Part Number
207	515	067340
215	517	067342
307	520	067343
315	522	067344
407	526	067345
415	528	067346
507	532	067347
515	534	067347
615	538	067348

TAF Sensor kits	Part Number
AC Prox	055943
DC Prox	055948
Thermocouple Transmitter	055931
EZLINK	059652
Cable Connector Kit	063694
4-20 ma Accelerometer and Thermocouple	067576

* For additional details on DODGE Smart Bearings, see brochure DMR-2026-6

FEATURES/BENEFITS PAGE B6-3	SPECIFICATION PAGE B6-8	NOMENCLATURE PAGE B6-10	SEL/DIMS - METRIC PAGE B6-70
--------------------------------	----------------------------	----------------------------	---------------------------------



Type E - Metric

SELECTION METRIC TYPE E TAPERED ROLLER BEARINGS

DODGE Type E Double Row Tapered Roller Bearings have the capacity to carry heavy radial loads, thrust loads, and combined radial and thrust loads. The maximum recommended load which can be applied is limited by various components in the system such as bearing, housing, shaft, shaft attachment, speed and life requirements as listed in this catalog. DODGE Unitized Type E Roller Bearings have been applied successfully even when these limits have been exceeded under controlled operating conditions. Contact DODGE Application Engineering (864-297-4800) for applications which exceed the recommendations of this catalog.

L₁₀ Life, Hours -- The fatigue life which may be expected from at least 90% of a given group of bearings operating under identical conditions.

$$L_{10} \text{ Life, Hours} = \left(\frac{C_{90}}{P} \right)^{10/3} \times \frac{1,500,000}{\text{RPM}}$$

Where: C_{90} = Dynamic Capacity (Table 9), kN
 P = Equivalent Radial Load, kN
 (See Equation 1 On Page B6-64 for definition of P)

GENERAL

Heavy Service -- For heavy shock loads, frequent shock loads, or severe vibrations, increase the Equivalent Radial Load up to 50% (according to severity of conditions) to obtain a Modified Equivalent Radial Load. Consult Application Engineering at 864-297-4800 for additional selection assistance.

Thrust load values shown in the table below are recommended as a guide for general applications that will give adequate L₁₀ life. With substantial radial loads also present, it is advisable to calculate actual L₁₀ life to assure the bearing meets requirements.

RPM RANGE	20 - 200	201 - 2000	over 2000
RECOMMENDED THRUST LOAD	C ₉₀ /4	C ₉₀ /8	C ₉₀ /12

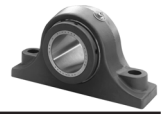
The shaft tolerances recommended below are adequate for the conditions outlined in this catalog. Since the allowable load, especially at a low speed, is very large, the shaft should be checked to assure adequate shaft strength.

The magnitude and direction of both the thrust and radial load must be taken into account when selecting a shaft size. **Heavy loads should be directed through the base. Where uplift loads are involved see Table 12 for maximum values.** Where a load pulls the housing away from the mounting base, both the hold-down bolts and housing must be of adequate strength. Auxiliary load carrying devices such as shear bars are advisable for side or end loading of plummer blocks.

SHAFT TOLERANCES

SHAFT SIZE	TOLERANCE
Up to 35mm	+.000 - .013mm
40 to 100mm	+.000 - .025mm
100 - 150mm	+.000 - .038mm
160 - 180mm	+.000 - .051mm

FEATURES/BENEFITS PAGE B6-3	SPECIFICATION PAGE B6-8	NOMENCLATURE PAGE B6-10	SEL/DIMS - METRIC PAGE B6-70
--------------------------------	----------------------------	----------------------------	---------------------------------



Type E - Metric

SELECTING BEARINGS SUPPORTING RADIAL LOADS ONLY

1. Define the desired L_{10} Life, in Hours
2. Establish bearing radial load, FR, kN
3. Establish RPM.

FR = P for Pure Radial Load Conditions.

P = Equivalent radial load, kN

(The Dodge program BEST• can be used to find application loads.)

Using the easy selection Table 10, Page B6-66 under the RPM column find the equivalent load that equals or is higher than the application radial load for the desired life. The shaft size on the far left will be the minimum shaft size that you can use for your application. If the desired life is different than the values shown on the chart, use alternate Method A shown below.

Example: L_{10} Life = 30,000 Hours

Radial load = 18 kN

RPM = 1000

At the intersection of the 1000 RPM column and at the 30,000 hours L_{10} life row, the equivalent radial load of 25 kN exceeds the 18kN application radial load for shaft

sizes 80, 85, and 90. Therefore, an 80, 85, or 90mm E bearing can be used to meet the application conditions of the above example:

ALTERNATE METHOD A --SELECTING A BEARING FOR AN L_{10} LIFE VALUE NOT SHOWN IN THE EASY SELECTION CHART.

The L_{10} life equation can be rearranged so that the bearing dynamic capacity C_{90} is identified in terms of L_{10} , RPM and P.

$$C_{90} = \left(\frac{L_{10} \times \text{RPM}}{1,5000,000} \right)^{0.3} \times P$$

(P = F_R for Pure Radial Load Conditions)

Since the L_{10} , RPM, and P are known, solve for C_{90} . Select from the dynamic capacity column on Table 9 the C_{90} value equal to or greater than the C_{90} value just calculated. The bore size on the far left represents the minimum shaft size selection. Check that the application RPM does not exceed the MAX. RPM on Table 9. When selecting a L_{10} life of less than 30,000 hours particular attention must be paid to shaft deflection and proper lubricant selection.

- The DODGE Bearing Evaluation and Selection Technique (BEST) is a menu driven computer program that calculates bearing loads, fatigue life, and operating temperature for a two bearing shaft system based on user supplied input parameters.

FEATURES/BENEFITS PAGE B6-3	SPECIFICATION PAGE B6-8	NOMENCLATURE PAGE B6-10	SEL/DIMS - METRIC PAGE B6-70
--------------------------------	----------------------------	----------------------------	---------------------------------



Type E - Metric

SELECTING BEARINGS SUPPORTING BOTH RADIAL AND THRUST LOADS

When a bearing supports both a radial load and a thrust load, the loading on the two rows is shared unequally depending on the ratio of thrust to radial load. The use of the X (radial factor) and Y (thrust factor) from Table 9 convert the applied thrust load and radial loads to an equivalent radial load having the same effect on the life of the bearing as a radial load of this magnitude.

The equivalent radial load $P = XFR + YFA$ (Equation 1)

Where:

- P = Equivalent radial load, kN
- FR = Radial load, kN
- FA = Thrust (axial) load, kN
- e = Thrust load to radial load factor (Table 1)
- X = Radial load factor (Table 1)
- Y = Thrust load factor (Table 1)

Calculate FA/FR and compare to **e** for the selected bore size. Determine X and Y from Table 1 depending on whether FA/FR is equal to or less than **e**, or FA/FR greater than **e**. Substitute all known values into the equivalent radial load equation. P (equivalent radial load) can be used in the life formula to determine L_{10} life in hours or compared to the allowable equivalent radial load ratings for the speed and hours life desired in the easy selection table.

SELECTING BEARINGS SUPPORTING ONLY THRUST LOADS

Type E tapered roller bearings are well suited to carry pure thrust loads. Follow the same selection procedure used above "Selecting Bearings Supporting Both Radial and Thrust Loads" except the equation $P = XFR + YFA$ reduces to $P = YFA$. (XFR is equal to zero)

TABLE 9 RADIAL AND THRUST FACTORS FOR TYPE E TAPERED ROLLER BEARINGS (METRIC)

SHAFT SIZE (MM)	e	FA/FR ≤ e		FA/FR > e		DYNAMIC CAPACITY C_{90} * kNEWTONS	MAXIMUM RPM	MAXIMUM SLIP FIT RADIAL LOAD, (FR)k N**
		X	Y	X	Y			
35	0.46	.87	1.89	.70	2.28	21.2	3,820	22.2
40	0.44	.87	1.96	.70	2.37	27.3	3,320	28.5
45, 50	0.33	.87	2.64	.70	3.18	35.9	3,050	37.4
55	0.35	.87	2.38	.70	2.87	38.0	2,730	39.6
60, 65	0.40	.87	2.17	.70	2.63	40.4	2,420	42.2
70, 75	0.45	.87	1.87	.70	2.26	42.7	2,060	44.5
80, 85, 90	0.50	.87	1.71	.70	2.07	68.1	1,640	71.2
100	0.49	.87	1.77	.70	2.14	93.4	1,530	98.0
110, 115	0.53	.87	1.63	.70	1.97	114.8	1,360	120.0
125	0.47	.87	1.83	.70	2.21	157.9	1,200	164.6
135, 140, 150	0.49	.87	1.76	.70	2.12	181.1	915	188.6
160, 170, 180	0.54	.87	1.61	.70	1.95	307.9	790	320.2

FEATURES/BENEFITS PAGE B6-3	SPECIFICATION PAGE B6-8	NOMENCLATURE PAGE B6-10	SEL/DIMS - METRIC PAGE B6-70
--------------------------------	----------------------------	----------------------------	---------------------------------

SELECTION



Type E - Metric

COMPARING SPHERICAL TO TAPER ROLLER BEARING

The dynamic capacity C (spherical) and C_{90} (taper) are not to the same base. To compare basic dynamic capacities, multiply C x .259 and compare to C_{90} .

To select and then compare, use the complete selection procedure for each type bearing and then compare.

* C_{90} ---Dynamic capacity based on a rated life of 90 million revolutions or 3000 hours at 500 RPM.

** If load exceeds maximum allowable slip fit radial load (F_R), line to line, to-light press fit of shaft required. Application loads up to maximum slip fit radial load may be applied if recommended shaft tolerances are used.

D-LOK

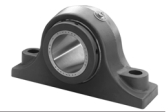
Type E Family

Speciality Tapered

S-2000

UNISPHERE II

FEATURES/BENEFITS PAGE B6-3	SPECIFICATION PAGE B6-8	NOMENCLATURE PAGE B6-10	SEL/DIMS - METRIC PAGE B6-70
--------------------------------	----------------------------	----------------------------	---------------------------------



Type E - Metric

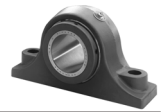
TABLE 10 - EASY SELECTION TABLE FOR TYPE E, DOUBLE ROW TAPERED ROLLER BEARINGS (METRIC)

SHAFT SIZE, MM	L10 LIFE, HRS.	ALLOWABLE EQUIVALENT RADIAL LOAD RATING (kN) AT VARIOUS REVOLUTIONS PER MINUTE														
		50	100	150	250	500	750	1000	1250	1500	1750	2000	2500	2700	3000	3500
35	10000	30	25	20	20	15	15	10	10	10	10	10	10	10	10	10
	30000	20	15	15	15	10	10	10	10	5	5	5	5	5	5	5
	40000	20	15	15	10	10	10	5	5	5	5	5	5	5	5	5
	60000	15	15	10	10	10	5	5	5	5	5	5	5	5	5	5
	100000	15	10	10	10	5	5	5	5	5	5	5	5	5	5	5
40	10000	35	30	25	25	20	15	15	15	15	15	10	10	10	10	10
	30000	25	20	20	15	15	10	10	10	10	10	10	10	5	5	5
	40000	25	20	20	15	10	10	10	10	10	10	5	5	5	5	5
	60000	20	20	15	15	10	10	10	10	5	5	5	5	5	5	5
	100000	20	15	15	10	10	10	5	5	5	5	5	5	5	5	5
45 50	10000	55	45	40	35	25	25	20	20	20	20	20	15	15	15	--
	30000	40	30	30	25	20	15	15	15	15	15	15	10	10	10	--
	40000	35	30	25	20	20	15	15	15	15	10	10	10	10	10	--
	60000	30	25	25	20	15	15	15	10	10	10	10	10	10	10	--
	100000	25	20	20	15	15	10	10	10	10	10	10	10	10	10	--
55	10000	50	40	40	30	25	25	20	20	20	20	15	15	15	15	--
	30000	40	30	25	25	20	15	15	15	15	10	10	10	10	10	--
	40000	35	30	25	20	15	15	15	10	10	10	10	10	10	10	--
	60000	30	25	20	20	15	15	10	10	10	10	10	10	10	10	--
	100000	25	20	20	15	15	10	10	10	10	10	10	10	10	5	--
60 65	10000	55	45	40	35	30	25	20	20	20	20	20	15	--	--	--
	30000	40	30	30	25	20	15	15	15	15	15	15	10	--	--	--
	40000	35	30	25	20	20	15	15	15	10	10	10	10	--	--	--
	60000	30	25	25	20	15	15	15	10	10	10	10	10	--	--	--
	100000	30	20	20	15	15	10	10	10	10	10	10	10	--	--	--
70 75	10000	60	50	40	35	30	25	25	20	20	20	20	--	--	--	--
	30000	40	35	30	25	20	20	15	15	15	15	15	--	--	--	--
	40000	40	30	30	25	20	15	15	15	15	10	10	--	--	--	--
	60000	35	30	25	20	15	15	15	10	10	10	10	--	--	--	--
	100000	30	25	20	20	15	15	10	10	10	10	10	--	--	--	--
80 85 90	10000	95	75	70	60	45	40	40	35	35	30	--	--	--	--	--
	30000	70	55	50	40	35	30	25	25	25	25	--	--	--	--	--
	40000	60	50	45	40	30	25	25	25	20	20	--	--	--	--	--
	60000	55	45	40	35	25	25	20	20	20	20	--	--	--	--	--
	100000	45	40	35	30	25	20	20	20	15	15	--	--	--	--	--
100	10000	130	105	95	80	65	55	50	50	45	--	--	--	--	--	--
	30000	95	75	65	55	45	40	40	35	35	--	--	--	--	--	--
	40000	85	70	60	50	40	40	35	30	30	--	--	--	--	--	--
	60000	75	60	55	45	40	35	30	30	25	--	--	--	--	--	--
	100000	65	50	45	40	30	30	25	25	25	--	--	--	--	--	--

For Maximum RPM See Table 1 on Page B6-14.

In The Shaded Area E, DI & TAF Mounted Unites Required Line-To-Line Press Fit To Shaft

FEATURES/BENEFITS PAGE B6-3	SPECIFICATION PAGE B6-8	NOMENCLATURE PAGE B6-10	SEL/DIMS - METRIC PAGE B6-70
--------------------------------	----------------------------	----------------------------	---------------------------------



Type E - Metric

TABLE 10 - EASY SELECTION TABLE FOR TYPE E, DOUBLE ROW TAPERED ROLLER BEARINGS (METRIC) (CONT.)

SHAFT SIZE, MM	L10 LIFE, HRS.	ALLOWABLE EQUIVALENT RADIAL LOAD RATING (kN) AT VARIOUS REVOLUTIONS PER MINUTE														
		50	100	150	250	500	750	1000	1250	1500	1750	2000	2500	2700	3000	3500
110 115	10000	160	130	115	100	80	70	65	60	--	--	--	--	--	--	--
	30000	115	95	80	70	55	50	45	45	--	--	--	--	--	--	--
	40000	105	85	75	65	50	45	40	40	--	--	--	--	--	--	--
	60000	95	75	65	55	45	40	35	35	--	--	--	--	--	--	--
	100000	80	65	55	50	40	35	30	30	--	--	--	--	--	--	--
125	10000	220	180	155	135	110	95	90	85	--	--	--	--	--	--	--
	30000	155	130	115	95	80	70	65	60	--	--	--	--	--	--	--
	40000	145	115	105	90	70	65	60	55	--	--	--	--	--	--	--
	60000	130	105	90	80	65	55	50	50	--	--	--	--	--	--	--
	100000	110	90	80	65	55	50	45	40	--	--	--	--	--	--	--
135 140 150	10000	250	205	180	155	125	110	100	--	--	--	--	--	--	--	--
	30000	180	145	130	110	90	80	75	--	--	--	--	--	--	--	--
	40000	165	135	120	100	85	75	65	--	--	--	--	--	--	--	--
	60000	145	120	105	90	75	65	60	--	--	--	--	--	--	--	--
	100000	125	100	90	75	65	55	50	--	--	--	--	--	--	--	--
160 170 180	10000	430	345	305	265	215	190	--	--	--	--	--	--	--	--	--
	30000	305	250	220	190	155	135	--	--	--	--	--	--	--	--	--
	40000	280	230	205	175	140	125	--	--	--	--	--	--	--	--	--
	60000	250	205	180	155	125	110	--	--	--	--	--	--	--	--	--
	100000	215	175	155	130	105	95	--	--	--	--	--	--	--	--	--

For Maximum RPM See Table 1 on Page B6-14.

In The Shaded Area E, DI & TAF Mounted Unites Required Line-To-Line Press Fit To Shaft

D-LOK

Type E Family

Speciality Tapered

S-2000

UNISPHERE II



Type E

LUBRICATION

DODGE Type E Metric Tapered Roller Bearings are lubricated at the factory with Mobilith AW 2 grease up to 125mm and with Mobilux #2 EP above 125mm. Mobilith AW 2 is a superior industrial grease using a lithium complex thickener and a highly refined base oil. Mobilux #2EP grease is a superior industrial greases using a lithium hydroxystearate thickener and highly refined base oil. These greases will adequately handle low and medium speeds with low and medium loads at normal temperatures as defined on Table 13. For very low and high speeds, for heavy loads and for low and high temperatures, special greases must be used. Contact DODGE Application Engineering (864) 284-5700. DODGE engineers will recommend bearings and lubricants for the unusual conditions. DODGE also has the expertise to custom design and build special bearings for your needs.

High Speed Operation --- In the higher speed ranges too much grease will cause overheating. The amount of grease that the bearing will take for particular high speed application can only be determined by experience. If excess grease in the bearing caused overheating, it will be necessary to remove grease fitting (also drain plug when furnished) to permit excess grease to escape. When establishing a relubrication schedule, note that a small amount of grease at frequent intervals is preferable to a large amount at infrequent intervals.

Operation in Presence of Dust, Water or Corrosive Vapors

--- Under these conditions the bearing should contain as much grease as speed will permit, since a full bearing with consequent slight leakage is the best protection against entrance of foreign material. In the higher speed ranges too much grease will cause overheating --- see "High Speed Operation". In the lower speed ranges, it is advisable to add extra grease to a new bearing before putting into operation. Bearings should be greased as often as necessary (daily if required) to maintain a slight leakage at the seals.

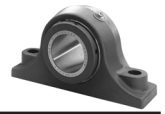
INSTALLATION AND MAINTENANCE

In nearly all applications good design practice requires two bearings supporting the shaft. In cases where three or more bearings are installed, unless precautions are taken to line the bearings up, both vertically and horizontally, it is possible to induce heavy loads. To ensure good alignment, mounting surfaces must be checked for flatness and must lie in the same plane. When tightening base bolts and cap bolts, each bolt should be alternately tightened in incremental torque values until full torque is achieved to prevent the angular shifting of the pillow block that occurs when one bolt is tightened to its full torque. Shimming may be required to minimize misalignment.

TABLE 11 - RELUBRICATION SCHEDULE

Hours Run per Day	SUGGESTED LUBRICATION PERIOD IN WEEKS							
	1 to 250 RPM	251 to 500 RPM	501 to 750 RPM	751 to 1000 RPM	1001 to 1500 RPM	1501 to 2000 RPM	2001 to 2500 RPM	2501 to 3000 RPM
8	12	12	10	7	5	4	3	2
16	12	7	5	4	2	2	2	1
24	10	5	3	2	1	1	1	1

FEATURES/BENEFITS PAGE B6-3	SPECIFICATION PAGE B6-8	NOMENCLATURE PAGE B6-10	SEL/DIMS - METRIC PAGE B6-70
--------------------------------	----------------------------	----------------------------	---------------------------------



Type E - Metric

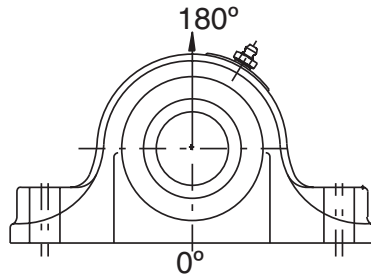


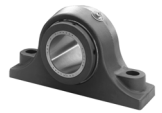
TABLE 12 - TYPE HOUSING RATINGS, GRAY IRON

BORE SIZE MM	MAXIMUM HOUSING CAP LOADS, kN
	P180
35	14
40	13
45, 50	23
55	16
60, 65	29
70, 75	31
80, 85, 90	70
100	72
110, 115	93
125	116
135, 140, 150	194
160, 170, 180	204

TABLE 13 - DEFINITION OF OPERATING CONDITIONS FOR TAPERED ROLLER BEARINGS

LOW SPEED MEDIUM SPEED HIGH SPEED	UP TO 20% OF MAX. RPM (TABLE 9) OVER 20% TO 80% OF MAX. RPM OVER 80% OF MAX. RPM
LIGHT LOAD NORMAL LOAD HEAVY LOAD	UP TO 30% OF C_{90} (TABLE 9) OVER 30% TO 70% OF C_{90} OVER 70% OF C_{90}
LOW TEMPERATURE MEDIUM TEMPERATURE HIGH TEMPERATURE VERY HIGH TEMPERATURE	-75°C TO - 10°C ABOVE - 10°C TO 100°C ABOVE 100°C TO 150°C ABOVE 150°C TO 205°C

SELECTION/DIMENSIONS



D-LOCK

Type E Family

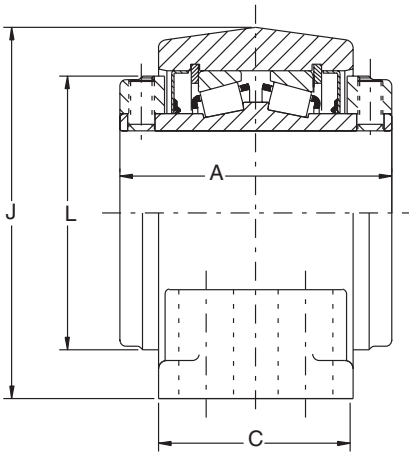
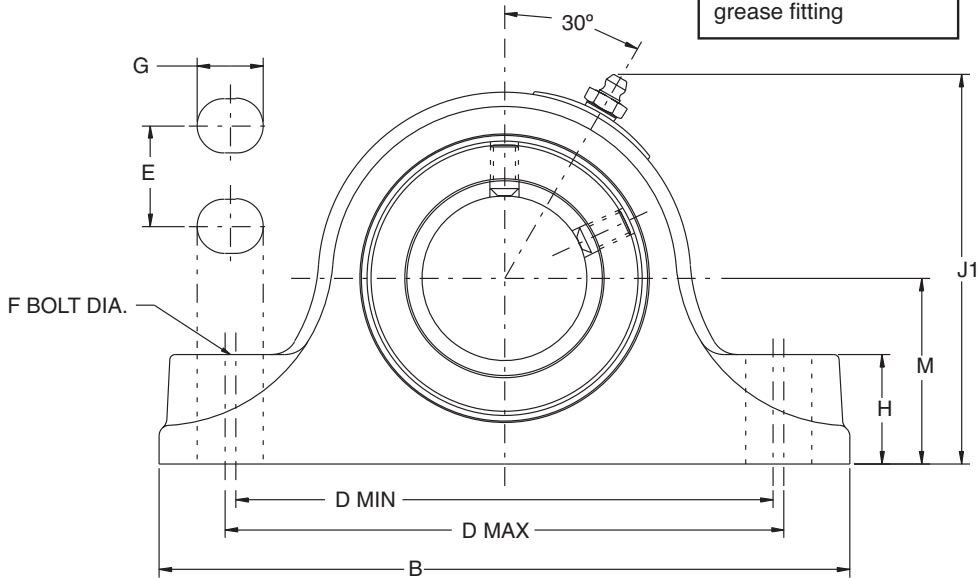
Specialty Tapered

S-2000

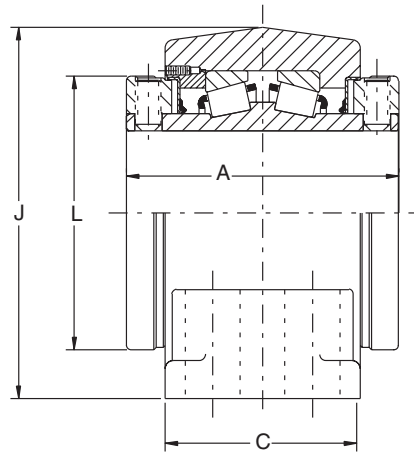
UNISPHERE II

Type E - Plummer Block - Metric 2 & 4 BOLT BASE

NOTE: All sizes use a 1/8 - 27 NPT hydraulic grease fitting



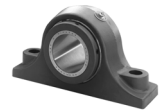
35mm THRU 75mm CONSTRUCTION



80mm THRU 125mm CONSTRUCTION

FEATURES/BENEFITS PAGE B6-3	SPECIFICATION PAGE B6-8	NOMENCLATURE PAGE B6-10	SELECTION - METRIC PAGE B6-61
--------------------------------	----------------------------	----------------------------	----------------------------------

SELECTION/DIMENSIONS



Type E - Plummer Block - Metric TYPE E PLUMMER BLOCKS, 2-BOLT

SHAFT SIZE (mm)	PART NUMBER	PART NAME	WEIGHT LBS. (APPROX.)
35mm	023620	P2B-E-035MR	7
40mm	023621	P2B-E-040MR	10
45mm	023622	P2B-E-045MR	12
50mm	023623	P2B-E-050MR	12
55mm	023624	P2B-E-055MR	15
60mm	023625	P2B-E-060MR	20
65mm	023626	P2B-E-065MR	20
70mm	023627	P2B-E-070MR	29
75mm	023628	P2B-E-075MR	27
80mm	023629	P2B-E-080MR	49
85mm	023630	P2B-E-085MR	47
90mm	023631	P2B-E-090MR	45

TYPE E PLUMMER BLOCKS, 4-BOLT

SHAFT SIZE (mm)	PART NUMBER	PART NAME	WEIGHT LBS. (APPROX.)
100mm	023632	P4B-E-100MR	69
110mm	023633	P4B-E-110MR	85
115mm	023634	P4B-E-115MR	91
125mm	023635	P4B-E-125MR	136
135mm	023636	P4B-E-135MR	245
140mm	023637	P4B-E-140MR	240
150mm	023638	P4B-E-150MR	235
160mm	023639	P4B-E-160MR	355
170mm	023640	P4B-E-170MR	345
180mm	023641	P4B-E-180MR	345

TYPE E PLUMMER BLOCKS, 2-BOLT BASE

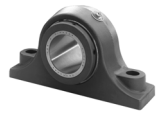
SHAFT SIZE (mm)	A	B	C	D		F Bolts	G	H	J1	L	M
				Min	Max						
35mm	76.2	187.0	54.0	142.8	149.2	M12	19	29	101.6	70	47.6
40mm	85.7	200.0	60.0	155.5	161.9	M12	19	32	113.5	81	54.0
45mm	88.9	225.0	64.0	174.6	181.0	M16	22	33	119	87	57.2
50mm											
55mm	95.3	244.0	67.0	193.7	200.0	M16	22	38	131.4	95	63.5
60mm	101.6	267.0	73.0	212.7	219.0	M16	22	41	142.8	103	69.9
65mm											
70mm	114.3	305.0	76.0	236.5	246.0	M20	27	48	161.1	120	79.4
75mm											
80mm	127.0	356.0	89.0	274.6	284.2	M20	30	57	190.5	139.7	95.3
85mm											
90mm											

TYPE E PLUMMER BLOCKS, 4-BOLT BASE

SHAFT SIZE (mm)	A	B	C	D		E	F Bolts	G	H	J1	L	M
				Min.	Min							
100mm	158.8	387	114	311.2	323.9	57.2	M20	28	62	216	152.4	108.0
110mm	171.5	422	117	336.6	349.3	63.5	M20	28	70	238	164	120.7
115mm												
125mm	184.2	470	130	387.4	400.0	73.0	M24	32	76	276	189	139.7
135mm	228.6	559	159	441.3	485.8	95.3	M24	51	83	335	238	169.9
140mm												
150mm												
160mm	266.7	660	181	539.8	590.6	117.5	M24	51	94	379	289	190.5
170mm												
180mm												

FEATURES/BENEFITS PAGE B6-3	SPECIFICATION PAGE B6-8	NOMENCLATURE PAGE B6-10	SELECTION - METRIC PAGE B6-61
--------------------------------	----------------------------	----------------------------	----------------------------------

SELECTION/DIMENSIONS



D-LOK

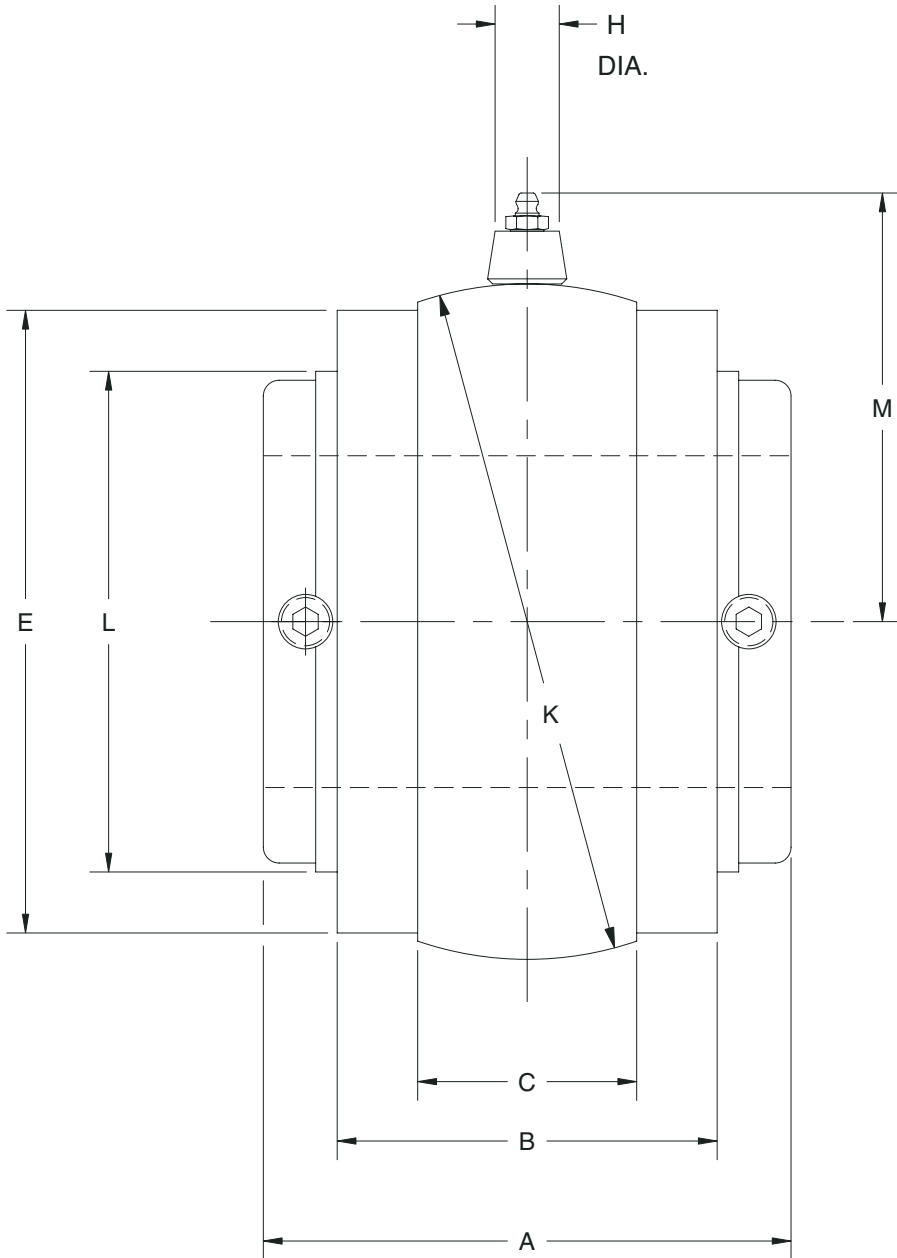
Type E Family

Specialty Tapered

S-2000

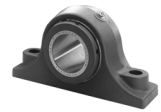
UNISPHERE II

DOUBLE-INTERLOCK - Metric



FEATURES/BENEFITS PAGE B6-3	SPECIFICATION PAGE B6-8	NOMENCLATURE PAGE B6-10	SELECTION - METRIC PAGE B6-61
--------------------------------	----------------------------	----------------------------	----------------------------------

SELECTION/DIMENSIONS



DOUBLE-INTERLOCK - Metric

METRIC DOUBLE INTERLOCK "S-1" UNITS - FRAY IRON			
SHAFT SIZE #	PART NUMBER	PART NAME	WEIGHT LBS (APPROX)
35mm	023700	S1U-DI-035M	5
40mm	023701	S1U-DI-040M	6
45mm	023702	S1U-DI-045M	8
50mm	023703	S1U-DI-050M	8
55mm	023704	S1U-DI-055M	10
60mm	023705	S1U-DI-060M	11
65mm	023706	S1U-DI-065M	10
70mm	023707	S1U-D9-070M	17
75mm	023708	S1U-DI-075M	17
80mm	023709	S1U-DI-080M	33
85mm	023710	S1U-DI-085M	32
90mm	023711	S1U-DI-090M	31
100mm	023712	S1U-DI-100M	42
110mm	023713	S1U-D1-110M	55
115mm	023714	S1U-DI-115M	71
125mm	023715	S1U-DI-125M	85

For housing references see the following pages: Pillow Blocks (B6-22 - B6-27) Flange Bearings (B6-28 - B6-28)

SHAFT SIZE (mm)	A	B	C	E		H DIA	K	L	M
				MACH SIZE	CAST SIZE				
35mm	3.00	2.063	1.156	3.250	3-5/16	0.688	3.625*	2.750	2.640
40mm	3.375	2.313	1.188	3.750	3-13/16	.0688	4.125*	3.188	2.890
45mm	3.500	2.875	1.500	4.125	4-3/16	0.688	4.562*	3.438	3.100
50mm									
55mm	3.750	2.563	1.563	4.500	4-5/8	0.688	5.000*	3.750	3.320
60mm	4.000	2.750	1.438	4.812	4-7/8	0.688	5.186*	4.063	3.410
65mm									
70mm	4.500	3.000	1.875	5.563	5-5/8	0.688	6.061*	4.719	3.850
75mm									
80mm	5.000	3.500	2.00	6.813	6-7/8	0.688	7.373#	5.531	4.510
85mm									
90mm									
100mm	6.250	4.500	2.375	7.438	7-1/2	0.313	7.997#	6.125	5.160
110mm	6.750	4.625	2.375	8.313	8-3/8	0.313	8.872#	6.438	5.600
115mm									
125mm	7.250	5.125	2.875	9.563	9-5/8	0.313	10.184#	7.438	6.260

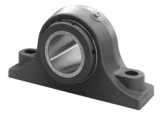
ALL DIMENSIONS ARE SHOWN IN INCHES

* +.000 to -.001"

+/- .0005"

FEATURES/BENEFITS PAGE B6-3	SPECIFICATION PAGE B6-8	NOMENCLATURE PAGE B6-10	SELECTION - METRIC PAGE B6-61
--------------------------------	----------------------------	----------------------------	----------------------------------

NOTES



D-LOK

Type E Family

Specialty Tapered

S-2000

UNISPHERE II

FEATURES/BENEFITS PAGE B6-3	SPECIFICATION PAGE B6-8	NOMENCLATURE PAGE B6-10	SELECTION - METRIC PAGE B6-61
--------------------------------	----------------------------	----------------------------	----------------------------------